

VISUAL AUTOMATION



VISUAL AUTOMATION

Product Manual

Secure Desktop

Version 11

Visual Automation, Inc.

PO Box 502

Grand Ledge, Michigan 48837 USA

sales@visualautomation.com

support@visualautomation.com

<http://visualautomation.com>

The information contained in this document is subject to change without notice.

Visual Automation makes no warranty of any kind with regard to this material, including, but not limited to, the implied warranties of merchantability and fitness for a particular purpose. Visual Automation shall not be liable for errors contained herein or for incidental or consequential damages in connection with the furnishings, performance, or use of this material.

This document contains proprietary information which is protected by copyright. All rights are reserved. No part of this document may be photocopied, reproduced, or translated to another program language without the prior written consent of Visual Automation, Inc.

Microsoft® and Windows® are registered trademarks of Microsoft Corporation.

© Visual Automation, Inc. 1994-2024 All Rights Reserved.

Last Updated January, 2024



TABLE OF CONTENTS

| | |
|--|----|
| Secure Desktop version 6.85 versus 11 | 6 |
| Secure Desktop 11 versus 10 | 7 |
| Secure Desktop - An Introduction | 8 |
| Secure Desktop Tools Secure Desktop tab | 10 |
| Secure Desktop Tools Windows Shell tab | 12 |
| Secure Desktop Shell | 15 |
| The 10 Minute Setup | 17 |
| Secure Desktop Tools Secure Desktop tab Icon button | 21 |
| Secure Desktop Tools Secure Desktop tab Icon button Import button | 22 |
| Secure Desktop Tools Secure Desktop tab Icon button Icon button | 25 |
| Secure Desktop Tools Secure Desktop tab Icon button Startup tab | 26 |
| Secure Desktop Tools Secure Desktop tab Option button Password tab | 27 |
| Secure Desktop Tools Secure Desktop tab Option button Icon tab | 28 |
| Secure Desktop Tools Secure Desktop tab Option button Audit tab | 30 |
| Secure Desktop Tools Secure Desktop tab Option button Key..Mouse tab | 31 |
| Secure Desktop Tools Secure Desktop tab Option button F1..F12 tab | 34 |
| Secure Desktop Tools Secure Desktop tab Option button A..Z 0..9 tab | 36 |
| Secure Desktop Tools Secure Desktop tab Option button Key State tab | 38 |
| Secure Desktop Tools Secure Desktop tab Option button Startup tab | 39 |
| Secure Desktop Tools Secure Desktop tab Option button Shutdown tab | 40 |
| Secure Desktop Tools Secure Desktop tab Option button Autostart tab | 41 |

TABLE OF CONTENTS (CONTINUED)

| | |
|--|----|
| Secure Desktop Tools Secure Desktop tab Window button Step 1 | 42 |
| Secure Desktop Tools Secure Desktop tab Window button Step 2 | 43 |
| Secure Desktop Tools Secure Desktop tab Window button Step 3 | 44 |
| Secure Desktop Tools Secure Desktop tab Window button Step 4 | 45 |
| Secure Desktop Tools Secure Desktop tab Window button Step 5 Manipulate a Window | 46 |
| Secure Desktop Tools Secure Desktop tab Window button Step 4 | 48 |
| Secure Desktop Tools Secure Desktop tab Window button Step 5 Send Key to a Window | 49 |
| Secure Desktop Tools Secure Desktop tab Window button Step 5 Close a Program During Shutdown | 50 |
| Secure Desktop Tools Secure Desktop tab Manage button Copy tab | 51 |
| Secure Desktop Tools Secure Desktop tab Manage button Edit tab | 52 |
| Secure Desktop Tools Secure Desktop tab Manage button Edit tab Edit UserName button | 54 |
| Secure Desktop Tools Secure Desktop tab Manage button Backup tab | 55 |
| Secure Desktop Tools Secure Desktop tab Manage button Restore tab | 56 |
| Secure Desktop Tools Secure Desktop tab Setting button Setting tab | 57 |
| Secure Desktop Tools Secure Desktop tab Setting button Console tab | 58 |
| Secure Desktop Tools Secure Desktop tab Setting button File Explorer tab | 59 |
| Secure Desktop Tools Secure Desktop tab Setting button Task Manager tab Automatically | 60 |
| Secure Desktop Tools Secure Desktop tab Setting button Mobility Center tab | 61 |
| Secure Desktop Tools Secure Desktop tab Setting button Internet Explorer tab | 62 |
| Secure Desktop Tools Secure Desktop tab Dialog button File Open/Save As tab | 63 |
| Secure Desktop Tools Secure Desktop tab Dialog button Print tab | 65 |
| Secure Desktop Tools Secure Desktop tab Dialog button Run tab | 66 |
| Secure Desktop Tools Secure Desktop tab Dialog button Internet Options tab | 67 |

TABLE OF CONTENTS (CONTINUED)

| | |
|--|----|
| Secure Desktop Tools Secure Desktop tab Dialog button File Properties tab | 68 |
| Secure Desktop Tools Secure Desktop tab Dialog button Popup Menu tab | 69 |
| Secure Desktop Tools Windows Shell tab All Users section Supervisor button Supervisor Mode tab | 70 |
| Secure Desktop Tools Windows Shell tab All Users section Supervisor button When Logged In tab | 71 |
| Secure Desktop Tools Windows Shell tab All Users section Supervisor button Calculation Passwords | 72 |
| Secure Desktop Tools Windows Shell tab All Users section Supervisor button Administrator | 74 |
| Secure Desktop's Configuration sdesktop.xml File | 75 |
| Windows Registry | 75 |
| Windows 10 & 11 Editions | 76 |
| Explorer Tips | 79 |
| Commenting on Visual Automation Products and Services | 80 |
| Technical Support Options | 80 |

Secure Desktop 6.85 versus 11

Secure Desktop 7 represented the single most significant re-design, primarily due to native support of Windows 7. It was necessary to change how we store the Secure Desktop configuration data, how it makes registry modifications, and even how Secure Desktop help works. Because we had to make these necessary changes, we took the opportunity to re-design the user interface, re-name product files, change how Secure Desktop launches programs, and even drop features that are no longer relevant.

We are very excited about Secure Desktop 11. It's easier to use, better looking, and the best user experience yet.

However, if you are an existing customer moving from version 6 or earlier of Secure Desktop to version 11, we strongly advise that you re-test your Secure Desktop configuration entirely. Secure Desktop 11 will automatically migrate your INI configuration files to the new sdesktop.xml file, making that part very easy. However, with so many changes, it's essential to re-test your configuration, especially in a mission-critical environment. Secure Desktop 7, Secure Desktop 8, Secure Desktop 10, and Secure Desktop 11 use the same sdesktop.xml file for configuration data.

Secure Desktop 11 is a 32-bit application but is also 64-bit aware. We tested Secure Desktop 11 in Windows 10, Windows 11, Windows Server 2016, Windows Server 2019, and Windows Server 2022. If you need legacy Windows version support, please consider purchasing Secure Desktop 10. We tested Secure Desktop 11 on Microsoft Surface Pro and Surface Laptop Studio computers. If you are using Windows 10 or Windows 11 in a mission-critical setting, please consider using the Enterprise LTSC Edition. Secure Desktop 11 is not in the Windows Store and therefore, will not run in Windows 10 S. Windows 10 S is upgradeable to Windows 10 Pro.

All modules of Secure Desktop 11 are 32-bit and is therefore compatible with Windows 10 on ARM or Windows 11 on ARM using emulation. We tested Secure Desktop 11 on Microsoft Surface Pro X. Secure Desktop 10 has both 32-bit and 64-bit modules, and therefore is not compatible with Windows 10 on ARM.

Secure Desktop 11 versus 10

It is occasionally essential to remove functionality from a software product. Secure Desktop 11 removes support for legacy versions of Windows XP, 7, and 8. We also removed Internet Explorer specific features. This streamlining of code and user interface sets the table for future Windows 10 and Windows 11 enhancements. One of these enhancements is that Secure Desktop 11 is now DPI (Dots Per Inch) aware, improving the user interface.

We will continue to sell Secure Desktop 10 for legacy systems and will not add new features.

We have created a new software package named Secure Utilities 11 included with Secure Desktop 11. Secure Utilities 11 is a combination of registry settings and small utilities based on the utility features included with Secure Desktop 10.

For a complete list of changes to Secure Desktop 11, please see the installation file Secure Desktop 11 Version Information text file or visualautomation.com.

Secure Desktop - An Introduction

A guide to Secure Desktop and an illustration of main concepts

Why Windows needs additional security

The design of Microsoft Windows is for a typical desktop environment, with one person using their computer. What if several people in an open environment use a PC that anyone has can access? What if you want the computer user to have access to only specific programs? Secure Desktop and Secure Utilities provide this security. Windows is a somewhat fragile environment in that the wrong setting somewhere may cause the system not to function as it once did. The best remedy to secure this computer is to provide the user with access to only the items they need to get to achieve the goal of the machine. Secure Desktop and Secure Utilities offer this capability.

In Program Files or Program Files (x86) Folder:



Secure Desktop Shell

Secure Desktop provides many applications for the desktop environment. In Secure Desktop 6, the Secure Desktop Shell was named Secure Desktop (vaprgman.exe). The Secure Desktop Shell file name is now sDesktop.exe with accompanying DLL named sDesktop.dll.



Secure Desktop Tools

The Secure Desktop Tools application provides the configuration interface for the Secure Desktop Shell and registry settings. In Secure Desktop 6, this was called Secure Setup (secure.exe). The Secure Desktop Tools file name is now sTools.exe found in the Program Files Folder. There is a companion executable named sAdmin.exe, which should not be called individually (it's called from sTools.exe and sDesktop.exe as needed).



Secure Desktop Manual

The Secure Desktop manual is the file you are browsing right now, named sDesktop.pdf. In Secure Desktop 7, 8, and 10, this manual file was named sManual.pdf.



Secure Desktop Audit Viewer

This program is a viewer for the sAudit XML files that Secure Desktop logs. In Secure Desktop 6, this file was called sLog.exe. The Secure Desktop Audit Viewer is now named sAudit.exe.

Secure Desktop Version Information

This text file will show you the latest changes for the newest version you have installed. This file is named sVersion.txt.



Secure Desktop Wallpaper

Turn on the wallpaper feature and set the JPG, JPEG, PNG, or BMP file to use at Secure Desktop Tools | Secure Desktop tab | Option button | Startup tab. This program is named sWall.exe. We have included sWall.png as the default wallpaper.

Other Files

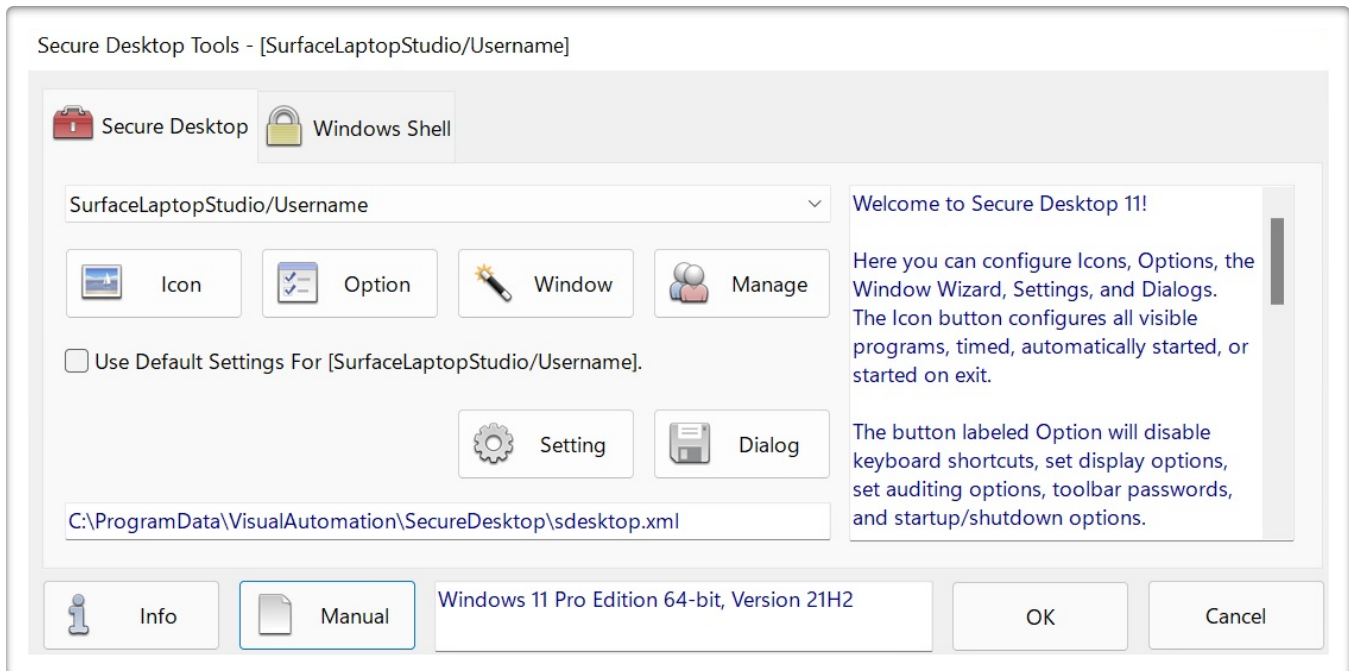
Secure Desktop 7, 8, and 10 may have included other files such as sControl.exe, sExplore.exe, sNote.exe, sCopy.exe, sUtilman.exe, and sLogOff.scr. These files are now part of Secure Utilities 11, which included with Secure Desktop 11. Please see the Secure Utilities 11 manual for information.

New Setup Program

Secure Desktop 11 uses Inno Setup for its installation software, rather than Wise used in previous versions. The signed setup EXE file has smaller files than the Wise version did.



Secure Desktop Tools | Secure Desktop tab



Welcome to Secure Desktop 11!

Here you can configure Icons, Options, the Window Wizard, Settings, and Dialogs.

The Icon button configures all visible programs, timed, automatically started, or started on exit.

The button labeled Option will disable keyboard shortcuts, set display options, set auditing options, toolbar passwords, and startup/shutdown options.

The Window button takes you to the Window Wizard and provides a way to act on other programs in the system, manipulating their windows.

Manage provides an easy way to copy settings from one user to another, edit user information, backup/restore the configuration XML file and examine Registry export files.

Use Default Settings For This User - In the User List, you see one setting for "Default." Each user can have configurations, or you can choose to use the default settings for a user. If a user never has settings, then the default settings are used.

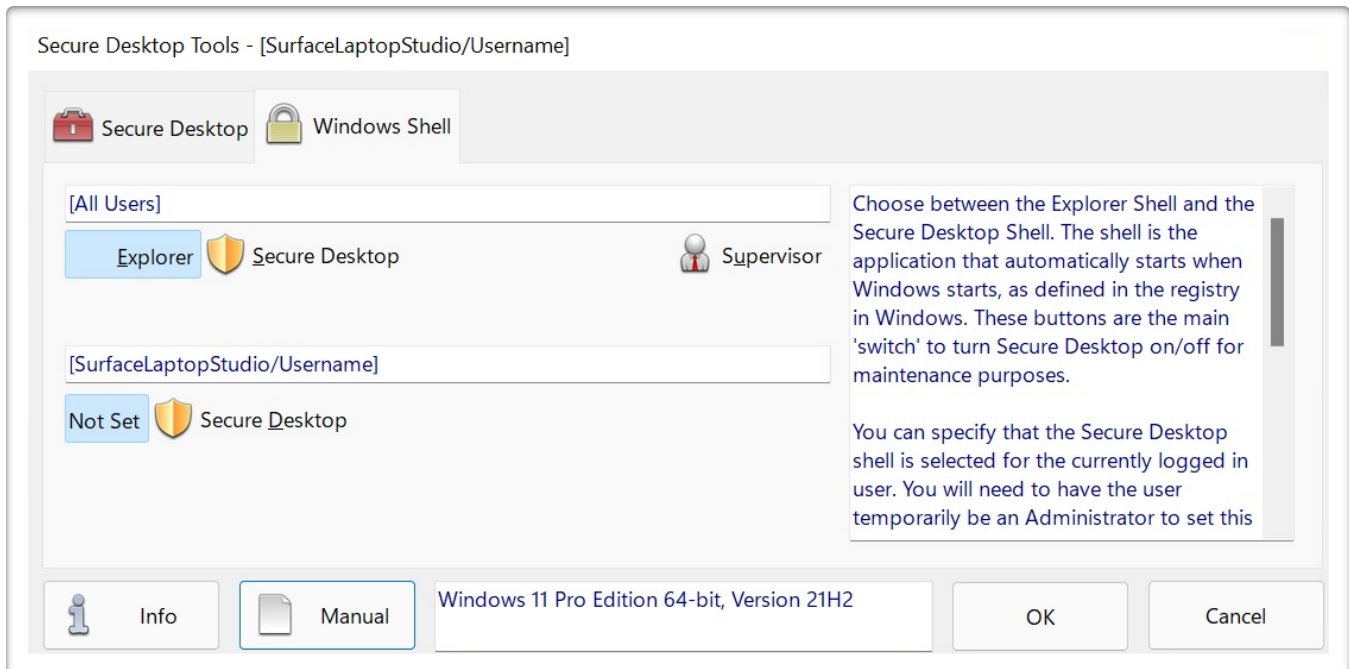
The Setting button provides a method to close many setting-related editing apps, should they be opened by any application.

The Dialog button provides a method to immediately close dialogs such as File Open, File Save As, Print, Run, and Internet Options.

For File Open, Browse, and File Save As dialogs, you can also disable mouse and keyboard input related to manipulating files or traversing the file system.



Secure Desktop Tools | Windows Shell tab



Choose between the Explorer Shell and the Secure Desktop Shell. The shell is the application that automatically starts when Windows starts, as defined in the registry in Windows. These buttons are the main 'switch' to turn Secure Desktop on/off for maintenance purposes. This registry location is:

HKEY_LOCAL_MACHINE\Software\Microsoft\Windows NT\CurrentVersion\WinLogon\Shell

This is set to Explorer.exe for the Explorer shell. It is set to the full path to sDesktop.exe for the Secure Desktop shell.

You can specify that the Secure Desktop shell is selected for the currently logged in user. Before version 11.90, you would need to have the user temporarily be an Administrator to set this registry value. Explorer would be the shell for all other users without this registry setting. This registry location before 11.90 was:

HKEY_CURRENT_USER\Software\Microsoft\Windows\CurrentVersion\Policies\System\Shell

and after 11.90:

HKEY_CURRENT_USER\Software\Microsoft\Windows NT\CurrentVersion\Winlogon\Shell

If Shell does not exist, there is not a shell set for this user. If Shell does exist, and it's set to the full path to sDesktop.exe, then the Secure Desktop shell is set for this user.

Secure Desktop Tools (sTools.exe) is actually launching sAdmin.exe with command-line parameters to change the shell setting in the registry.

There is new command-line parameter for your use as an icon within Secure Desktop. Configure icon in Secure Desktop Tools with command field set to:

C:\Program Files (x86)\Secure Desktop 11\sAdmin.exe /Shell Switch

Check the Run As Administrator checkbox for this icon. When the user clicks on this icon, the user will first see a UAC prompt (Administrator privileges are necessary). The user will be asked if they want to switch the shell from Secure Desktop to Explorer — or from Explorer to Secure Desktop. Finally, the user will be asked if they want to logoff from Windows.

In this way, you can provide the user with a password protected method of switching to the Explorer shell without the possible complexity of Secure Desktop Tools. A shortcut on the Explorer shell desktop can be setup the same way, to set the shell back to Secure Desktop.



A shield means that Administrator privileges are needed. If not logged in as an Administrator, you can choose from a user list.

The button labeled Supervisor can turn on a supervisor toolbar button to temporarily un-lock the system, disabling passwords, re-enabling keyboard shortcuts, and setting calculation password features.

Other Tabs that were in Secure Desktop 7, 8, and 10

Secure Desktop 7, 8, and 10 had Secure Desktop Tools tabs for Secure Desktop, Windows Shell, Safe Mode, USB, and Administrator. We have removed the last three from Secure Desktop 11.

Safe Mode Tab

Legacy versions of Windows before Windows 10 provided the ability to press the F8 key during bootup, which presented the user with a bootup menu. In Windows 10/11, Microsoft disabled the F8 key during bootup by default, so the Safe Mode tab is not necessary for Secure Desktop 11.

USB Tab

Legacy versions of Windows could not disable USB storage devices efficiently, so Secure Desktop provided a method for accomplishing this task. In Windows 10/11, there is a policy setting for this.

Open the Local Group Policy Editor (GPEdit.msc). Navigate to:

Local Computer Policy

Computer Configuration

Administrative Templates

System

Removable Storage Access

In the right pane, locate the following policies:

Removable Disks: Deny execute access

Removable Disks: Deny read access

Removable Disks: Deny write access

Set each of these policies to Enabled. Restart the system for these policies to take effect. Note: The Local Group Policy Editor is not available in Windows Home Edition.

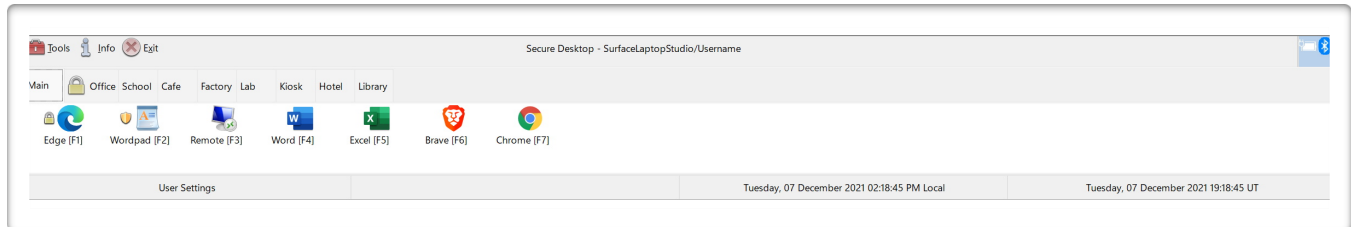
Administrator Tab

The Administrator tab had registry utilities for hiding drives, files and folders; logon settings like automatic logon; and Internet Explorer settings. You can now find drive hiding and logon settings in Secure Utilities 11, included with Secure Desktop 11. File and folder hiding is deprecated. We do not advise using Internet Explorer and have therefore deprecated this functionality as well.



Secure Desktop Shell

This is what a configured system looks like when the Windows system boots.



Toolbar Buttons

From left to right, these buttons are as follows;  Supervisor,  Secure Desktop Tools,  Info, and



Exit. Most of the toolbar buttons may be removed, except Info and Exit. Toolbar buttons may be password protected, except for Info. There is tooltip help provided for each of these toolbar buttons.

In Secure Desktop 7, 8, and 10, there were additional toolbar buttons such as Keyboard, Audit Viewer, Eject Device, Control Panel, and Program Run. Audit Viewer launched sAudit.exe. You may start this EXE like any other program in Secure Desktop. Secure Utilities 11, included with Secure Desktop 11, contains programs sEject.exe, sControl.exe, and sRun.exe. You may also start these EXE programs like any other in Secure Desktop.

Tab Definitions

You can define up to 10 different Icon tabs in the Secure Desktop Shell. Each icon tab has up to 12 visible icon applications. The Secure Desktop Shell also contains up to 18 startup applications, up to 12 timer applications, and up to 12 Shutdown applications. Startup, timer, and shutdown applications are not visible to the user. Each tab, except for the main icon tab, may have a password associated with the user getting to that tab. The lock icon next to a tab name designates a password protected icon tab.

Icon Definition

Classic Windows applications are EXE, COM, or BAT files. You can import shortcut files (*.LNK), and you can start document files also. A description can be typed in, indicating the name below the icon. A longer tooltip description can be typed in, which will be displayed as a tooltip when the application icon is selected. The padlock displayed next to an application icon indicates password protection. UWP (Universal Windows Platform) and PWA (Progressive Web Apps) apps are not supported.

Memory and Disk Space Monitoring, Date and Time

The Secure Desktop Shell monitors memory and disk space on the Windows drive. This feature can be disabled, and you can hide the status bar. The Secure Desktop Shell displays date and time, locally and in Universal Time (UT) format. You can hide the UT format of the time on the status bar. The Universal Time (UT) is also the format for date and time information logged with the Audit features.



Using Secure Desktop

The following are step-by-step instructions to help you complete tasks.

Getting Started with Secure Desktop

After installation, you can locate the Secure Desktop 11 folder in the Start menu. The main icon to focus on here is the Secure Desktop 11 Tools icon, providing the configuration information necessary for setting up your system.

The 10 Minute Setup

To quickly set up your system and get running, in approximately 10 minutes, follow these instructions:

Go to the Secure Desktop 11 folder in the start menu and double-click on the Secure Desktop 11 Tools icon



After choosing Default from the list of users in the Secure Desktop Tools tab, click the button labeled Option. Choose any overall options you may want here and click the OK button. Be sure to leave the Enable Tools checked in the Password tab.

Secure Desktop Option - [SurfaceLaptopStudio/Username]

| | | | | | | | | | | |
|----------|------|-------|------------|---------|------|------|-----------|---------|----------|-----------|
| Password | Icon | Audit | Key..Mouse | F1..F12 | A..Z | 0..9 | Key State | Startup | Shutdown | Autostart |
|----------|------|-------|------------|---------|------|------|-----------|---------|----------|-----------|

☒ Enable Tools

☐ Password

☐ Exit Password

☒ When Shell Only

Shortcut = None

☐ Password

Each of the toolbar buttons listed may be enabled and password protected.


Tools - Launches Secure Desktop Tools, file name sTools.exe, for Secure Desktop Shell configuration.

Exit - Ask for a password before displaying the Secure Desktop dialog for Log Off, Restart, Exit Windows dialog. Optionally, only ask for a password if Secure Desktop is the shell.



More



OK








Cancel







Click the Icon button .


Secure Desktop Icon - [SurfaceLaptopStudio/Username]

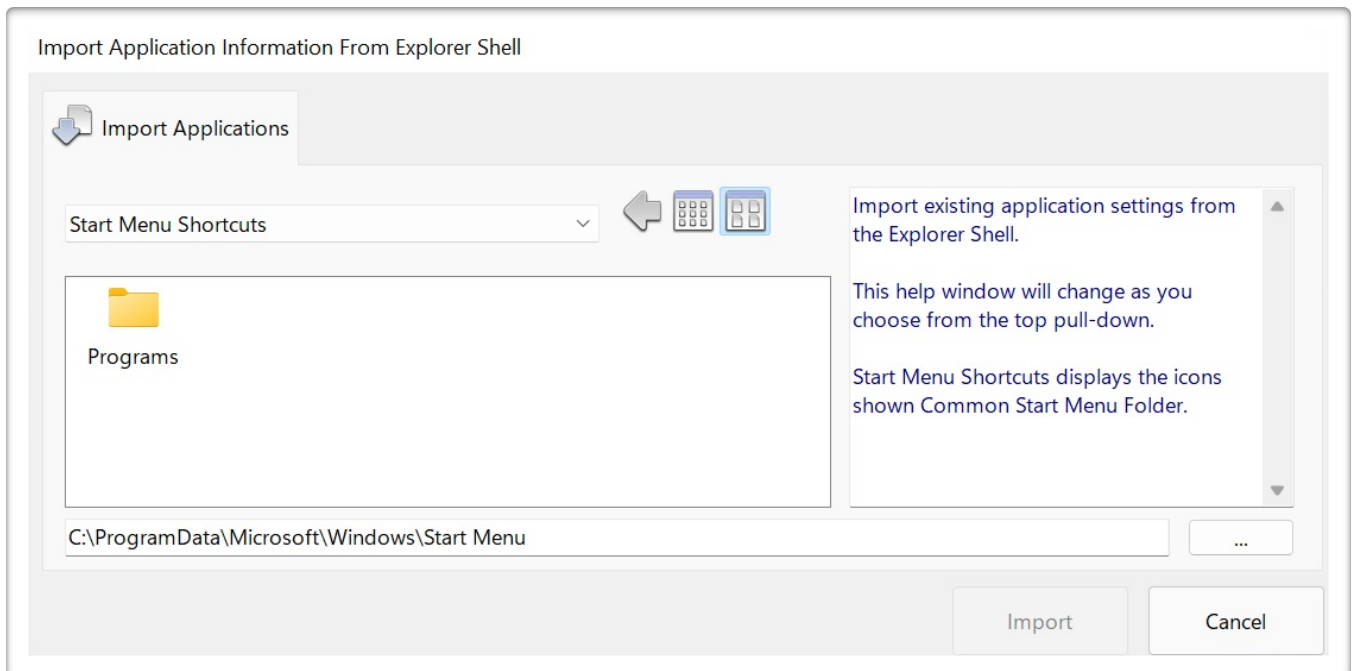
| | | | |
|-----------|----------------------------|--|--|
| Name | Edge | Name | Main |
| ToolTip | Browse the web | <input checked="" type="checkbox"/> Enable Icon | <input checked="" type="checkbox"/> Icon Password <input type="text" value="••"/> |
| Command | C:\Program Files (x86)\Mic |  Import | Normal <input type="text" value="v"/> <input type="checkbox"/> Restart If Closed |
| Directory | C:\Program Files (x86)\Mic | <input type="checkbox"/> Run As Administrator | <input type="checkbox"/> Single Instance Only  Help |


Main  Office School Cafe Factory Lab Kiosk Hotel Library Tab 9  Startup

| | | | | | | |
|---|--|---|---|--|--|---|
|  Edge [F1] |  Wordpad [F2] |  Remote [F3] |  Word [F4] |  Excel [F5] |  Brave [F6] |  Chrome [F7] |
|---|--|---|---|--|--|---|

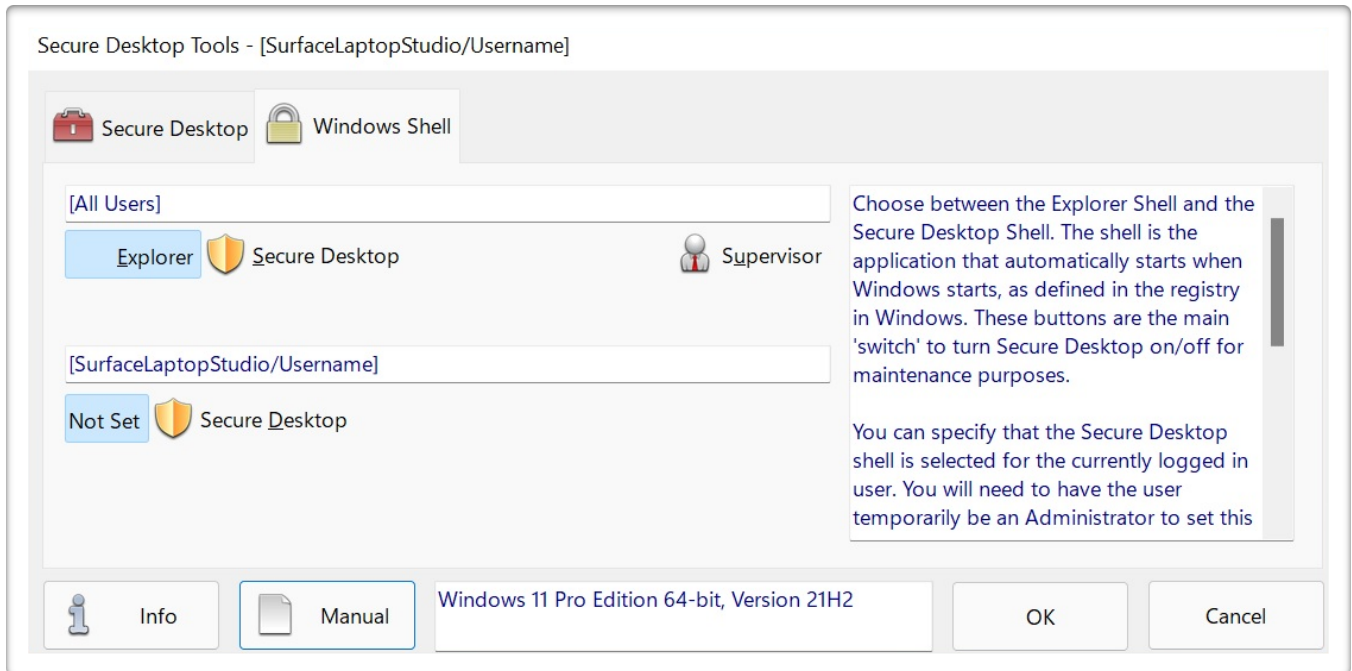
 More  Cut  Copy  Paste  Delete  Close

You will see Tab 0, Tab 1, Tab 2, and so-on. Choose one of those and press the  Import button, which will import the icon shortcut to the highlighted Secure Desktop icon. You can now change various pieces of information about the application icon, and apply a password to each of them if you want to.



You can test your settings right now by running the Secure Desktop Shell  from the Start Menu. Once you are satisfied with your configuration, you can set the shell to Secure Desktop. Please make sure that the Tools button is still available so that you can get back into your settings.

Click the Secure Desktop button in the Windows Shell Tab to set Secure Desktop as the shell for [All Users].



When you log off and log back on, you will not see the Explorer shell, only the Secure Desktop Shell.

That's all there is to it! (Did it take 10 minutes?)



Secure Desktop Tools | Secure Desktop tab | Icon button

Secure Desktop Icon - [SurfaceLaptopStudio/Username]

| | | | |
|-----------|----------------------------|---|--|
| Name | Edge | Name | Main |
| ToolTip | Browse the web | <input checked="" type="checkbox"/> Enable Icon | <input checked="" type="checkbox"/> Icon Password ●● |
| Command | C:\Program Files (x86)\Mic | Import | Normal ▾ |
| Directory | C:\Program Files (x86)\Mic | <input type="checkbox"/> Run As Administrator | <input type="checkbox"/> Restart If Closed |
| | | <input type="checkbox"/> Single Instance Only | Help |

Main Office School Cafe Factory Lab Kiosk Hotel Library Tab 9 Startup

| | | | | | | |
|-----------|--------------|-------------|-----------|------------|------------|-------------|
| Edge [F1] | Wordpad [F2] | Remote [F3] | Word [F4] | Excel [F5] | Brave [F6] | Chrome [F7] |
|-----------|--------------|-------------|-----------|------------|------------|-------------|

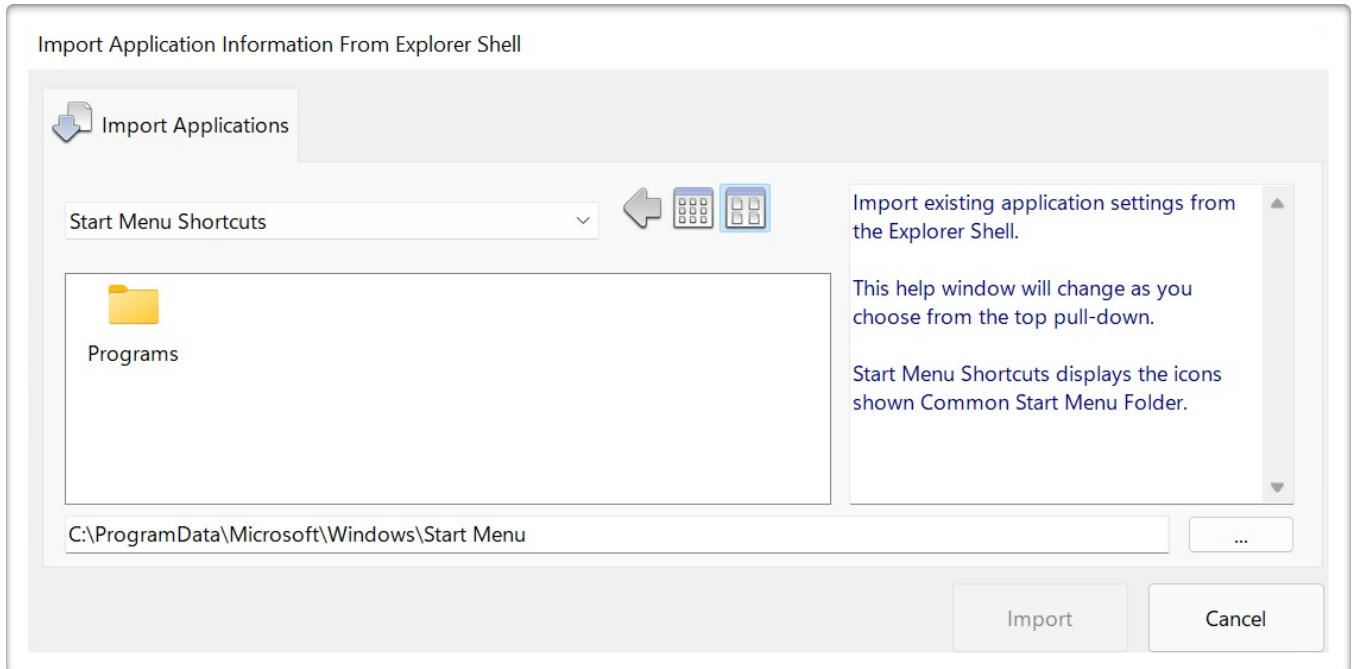
More
 Cut
 Copy
 Paste
 Delete
 Close



The Import button provides a way to import existing program settings from the Explorer Shell.



Secure Desktop Tools | Secure Desktop tab | Icon button | Import button



Start Menu Shortcuts displays the icons shown in the Explorer Start Menu.

Startup Folder Shortcuts displays the icons in the Common Startup Folder. (available when Startup Tab selected)

Registry Startup shows the programs in the
HKEY_LOCAL_MACHINE\Software\Microsoft\Windows\CurrentVersion\Run registry location. (available when
Startup Tab selected)



Desktop Shortcuts displays the icons in the Common Desktop Folder.

Program Files displays the icons in the Program Files Folder.

My Computer displays the icons in the Drives Folder.

Select the application icon that you wish to import and tap the Import button.

When importing a shortcut file (*.LNK), Secure Desktop looks for an EXE and File Path information, and imports that data directly into the appropriate fields for a Secure Desktop Icon.

The  More button will widen the dialog so that you can see more icons and tabs in one row. This button will change to  Less, to bring it back to the standard size.

The icons F1 - F12 are setup very similar to icons in the Explorer shell.

Name - This is a short description that sits below the application icon. This description defaults to the file name after browsing for an application or dropping a shortcut on to the command line area.

Tooltip - This description is displayed as a tooltip when the mouse passes over an icon. The tooltip is much longer than the icon name and defaults to the directory and executable name when browsing for a program file.

Command - This is an essential part of setting up an application. The command line represents the path and executable name with any additional command line parameters. The browse button on the right is useful for finding the app that you want to configure. Typical file extensions in the command line are EXE, COM, and BAT, but you can also bring in shortcut files (LNK) or document files.

Directory - This represents the path needed by the program defined in the command line. Most applications use their application path as the working directory, so this is the default when a program is chosen by browsing for it. Some programs may require a different file path typed in here.

☐ Enable Tab - determines if this tab is visible in the Secure Desktop Shell.

☐ Password - determines if individual tab security is enabled.

Tab Name - sets the name of the individual tab.

☐ Enable Icon - determines if this icon is visible in the Secure Desktop Shell.

☐ Password - determines if individual application security is enabled.

Icon Password Entry Field - determines the password to use if the Icon Password checkbox is enabled. When prompted for the password on a touchscreen system, use the on-screen keyboard.



Icon Button - Provides the ability to change to a different icon in the application, or to switch to an icon image in another file, such as different EXE, DLL, or ICO file extension.

Window State - determines the initial size of the window for the application, Normal representing the last size, Minimized as an icon, Maximized as full screen, and Hidden. Hidden windows are not displayed anywhere in the system and are useful for communications programs that do not need to have user interaction.

☐ Restart If Closed - When checked, Secure Desktop will monitor a program to see if it has shut down for any reason. If it has shut down, it will restart it with the same parameters specified. NOTE: This function works because Secure Desktop starts a new process. In the main timer loop, Secure Desktop checks to see if that process is still running and relaunches the program if it is not running. If the program that you start then starts another application and then ends its primary execution process, you may have a loop situation where the program will continually startup. We have witnessed this effect with various programs.

☐ Run As Administrator – Check to run the program in a different user security context. Note that disabled hot-keys or mouse buttons will not be disabled in applications in this different security context.

☐ Single Instance Only – Check to allow one instance of a program only.



Cut,



Copy,



Paste,

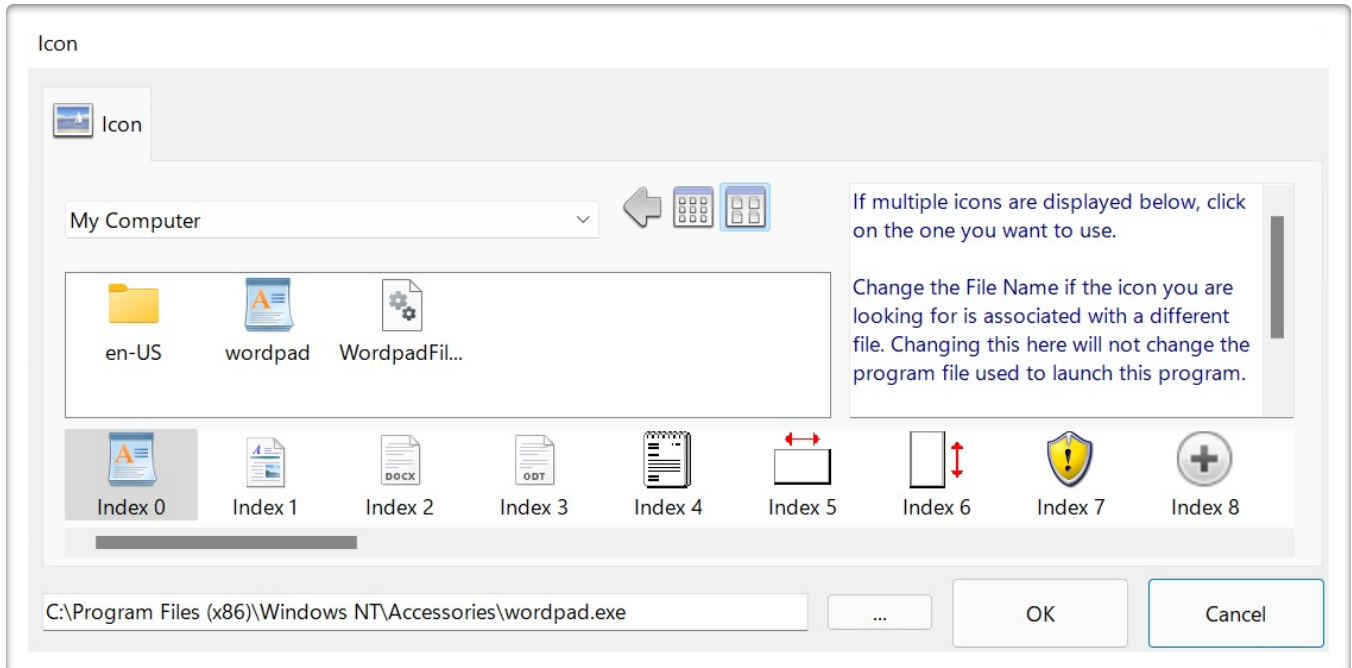


Delete Buttons -

These are standard clipboard functions that work with the entire collection of possible settings for a given application, providing a simple method of copying an application configuration to a different place. Individual text strings may work with the clipboard via the Ctrl-X (Cut), Ctrl-C (Copy), Ctrl-V (Paste), or Del (Delete).



Secure Desktop Tools | Secure Desktop tab | Icon button | Icon button



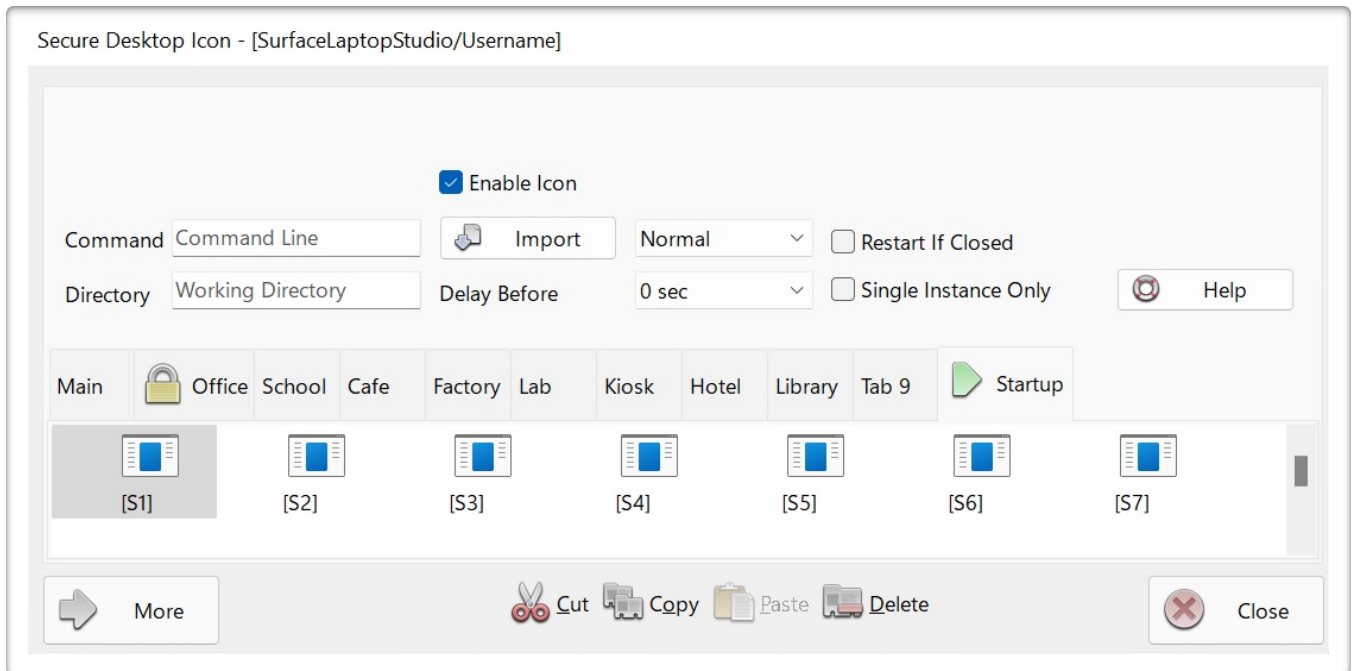
If multiple icons are displayed, click the icon you want to use.

Change the File Name if the icon you are looking for is associated with a different file. Changing the file here will not change the program file used to launch this program.

Select the icon from the list below. Scroll through this list if you want to see more icons.



Secure Desktop Tools | Secure Desktop tab | Icon button | Startup tab



In the Startup tab, you will find 18 icons labeled [S1] – [S18]. These icons define up to 18 applications that will automatically start right after the Secure Desktop Shell has begun.

Clicking on one of these icons, you'll find that many of the fields are not visible because they are not needed. These icons never appear to the user as applications; they start when Secure Desktop starts. Therefore, you only need the command string, the window state, and enable icon enabled for the main configuration.

Note the Delay Before setting. This will specify the number of seconds to wait before starting an application.

The Explorer shell may start many programs specified by either the Startup folder or Registry settings. The Secure Desktop shell, by design, will only auto-start the applications found in the Startup tab.

To find a list of what the Explorer shell auto starts during system boot up or log in, consider downloading a free utility from Microsoft named Autoruns. At the time of this writing, you should be able to download it here:

<https://docs.microsoft.com/en-us/sysinternals/downloads/autoruns>

Autoruns will also give you information about auto-start services. The Secure Desktop shell does not start services, but the Explorer shell may start services that it needs. Set any windows service you need to Automatic.



Secure Desktop Tools | Secure Desktop tab | Option button |

Secure Desktop Option - [SurfaceLaptopStudio/Username]

| | | | | | | | | | | | | | | | | | | |
|--|----------|--|------|--|-------|--|------------|--|---------|--|-----------|--|-----------|--|---------|--|----------|-----------|
| | Password | | Icon | | Audit | | Key..Mouse | | F1..F12 | | A..Z 0..9 | | Key State | | Startup | | Shutdown | Autostart |
|--|----------|--|------|--|-------|--|------------|--|---------|--|-----------|--|-----------|--|---------|--|----------|-----------|

☒ Enable Tools
 ☐ Password

☐ Exit Password

☒ When Shell Only

Shortcut = None

☐ Password

Each of the toolbar buttons listed may be enabled and password protected.

Tools - Launches Secure Desktop Tools, file name sTools.exe, for Secure Desktop Shell configuration.

Exit - Ask for a password before displaying the Secure Desktop dialog for Log Off, Restart, Exit Windows dialog. Optionally, only ask for a password if Secure Desktop is the shell.

More

OK

Cancel

Password tab

Each of the toolbar buttons listed may be enabled and password protected.

- ☐ Tools - Launches Secure Desktop Tools, file name sTools.exe, for Secure Desktop Shell configuration.
- ☐ Exit - Ask for a password before displaying the Secure Desktop dialog for Log Off, Restart, Exit Windows dialog. Optionally, only ask for a password if Secure Desktop is the shell.

Hot-Key to bring Secure Desktop to the Top - Defines a global keystroke for bringing Secure Desktop to the top of the window pile (top of the z-order). Optionally, when depressing the hot-key, a password dialog will appear. If the password entered is not correct, or if 60 seconds have passed, the window that previously had focus will come back to the top.

In Secure Desktop 7, 8, and 10, there were additional toolbar buttons such as Keyboard, Audit Viewer, Eject Device, Control Panel, and Program Run. Audit Viewer launched sAudit.exe. You may start this EXE like any other program in Secure Desktop. Secure Utilities 11, included with Secure Desktop 11, contains programs sEject.exe, sControl.exe, and sRun.exe. You may also start these EXE programs like any other in Secure Desktop.



Secure Desktop Tools | Secure Desktop tab | Option button | Icon tab

Secure Desktop Option - [SurfaceLaptopStudio/Username]

☐ Password
 ☒ Icon
 ☐ Audit
 ☐ Key..Mouse
 ☐ F1..F12
 ☐ A..Z
 ☐ 0..9
 ☐ Key State
 ☒ Startup
 ☒ Shutdown
 ☐ Autostart

Secure Desktop Position:
 Secure Desktop Position - Sets the initial position of the Secure Desktop toolbar on startup to Top or Bottom of the Screen.

Secure Desktop Window:
 Secure Desktop Window - Sets the Z-Order to normal Window, Always On Top, or Always On Bottom. If Always On Top is selected, a maximized window will use Secure Desktop as the window's top or bottom edge.

Icon Mouse Click:
 Icon Mouse Click - You can choose to have

Icon Background Color: ☐ Window Background

☐ Disable All Function Keys for Secure Desktop Icons

☐ Set to First Tab After Icon in another Tab is clicked

Secure Desktop Position - Sets the initial position of the Secure Desktop toolbar on startup to Top or Bottom of the Screen.

Secure Desktop Window - Sets the Z-Order to normal Window, Always On Top, or Always On Bottom. If Always On Top is selected, a maximized window will use Secure Desktop as the window's top or bottom edge.

Icon Mouse Click - You can choose to have single or double-click for starting applications with the mouse.

Icon Background Color - This is the background color used for the icon field.

Disable All Function Keys for Secure Desktop Icons - Icons are automatically assigned F1 - F12 function keys, check this to disable them.

Set to First Tab After Icon in another Tab is clicked - If you password protect groups (or tabs), then you may want to use this. If a user is in a tab other than the first group (far left), then clicks on an icon, it will automatically switch back to the first tab if checked.

Hide the Tab Bar if only the First Tab is Enabled - To minimize Secure Desktop's height, you can turn off the tab bar if you are only using the first tab.

Disable Mouse Click for 'Tray Icons' - This will disable both the left-mouse button and the right-mouse button for all icons in the Secure Desktop tray icon area.

Show System Icons (Volume, Network, Power, etc.) - This will start shell services. Please use CAUTION, as malware may compromise Shell Services.

Hide Status Bar - To minimize Secure Desktop's height, you can turn off the status bar.

Hide Universal Time on Status Bar - Normally, both Local Time and Universal Time are displayed.

Disable Screen Saver Continuously - Some customers have corporate-wide profile updates that set a screen saver. Check this option if you do not want any screen saver to be activated. Secure Desktop will clear the screen saver settings continuously.

Disable Clipboard - This feature will listen to the clipboard. If the contents of the clipboard change, Secure Desktop clears the clipboard.



Secure Desktop Tools | Secure Desktop tab | Option button | Audit tab

Secure Desktop Option - [SurfaceLaptopStudio/Username]

☐ Password
 ☐ Icon
 ☒ Audit
 ☐ Key..Mouse
 ☐ F1..F12
 ☐ A..Z
 ☐ 0..9
 ☐ Key State
 ☐ Startup
 ☒ Shutdown
 ☐ Autostart

☐ Audit Secure Desktop Events and User Name
☐ Audit Window Titles and User Name

Audit Secure Desktop Events and User Name - Save start, stop, program start, tab click, and toolbar icon click events in the sAudit XML files. These XML files are in the RSS 2.0 format, with the file name corresponding to the day of the log, one log file per day.

 Audit Window Titles and User Name - The window titles are saved to the XML files

C:\ProgramData\VisualAutomation\SecureDesktop\sAudit RSS Tuesday 07 June 2022 UT.xml

☐ Audit Secure Desktop Events and User Name - Save start, stop, program start, tab click, and toolbar icon click events in the sAudit XML files. These XML files are in the RSS 2.0 format, with the file name corresponding to the day of the log, one log file per day.

☐ Audit Window Titles and User Name - The window titles are saved to the XML files either every 5 minutes. The top window title is stored as is the latest user who has logged in.

Date and Time are in the Universal Time format.



Secure Desktop Tools | Secure Desktop tab | Option button | Key..Mouse tab

Secure Desktop Option - [SurfaceLaptopStudio/Username]

☐ Password
 ☐ Icon
 ☐ Audit
 ☒ Key..Mouse
 ☐ F1..F12
 ☐ A..Z
 ☐ 0..9
 ☐ Key State
 ☐ Startup
 ☒ Shutdown
 ☐ Autostart

Disable Windows Keyboard Shortcuts

☐ Alt + Tab

☐ Ctrl + Tab

☐ Ctrl + Shift + Tab

Disable Mouse Buttons

☐ Right

☐ Alt + Right

☐ Shift + Right

Alt + Tab: Switch between open windows. While holding the Alt key down, you can press Tab several times to navigate through the system display of each previously used window.

Disable Windows Keyboard Shortcuts and Disable Mouse Buttons - Check the appropriate checkbox to disable the shortcut or button.

[Known keyboard shortcut help is available](#)

Disable Windows Keyboard Shortcuts

- ☐ Alt + Tab: Switch between open windows. While holding the Alt key down, you can press Tab several times to navigate through the system display of each previously used window.
- ☐ Ctrl + Tab: Moves to next pane or palette.
- ☐ Ctrl + Shift + Tab: Moves to previous pane or palette.
- ☐ Alt + Shift + Tab: Similar to Alt + Tab, switch backward between open windows. You can switch between moving backward or forward by holding or releasing the Shift key.
- ☐ Esc: Cancel the current task.
- ☐ Alt + Esc: Cycle the input focus through the windows in the order opened; compare to Alt + Tab.
- ☐ Ctrl + Esc: Display or hide the Start menu (same as Windows Key).

- ☐ Shift + Esc: Used By Some Multimedia Programs To Exit.
- ☐ Ctrl + Shift + Esc: Launches Windows Task Manager.
- ☐ Ctrl + Alt + Esc: Cycle the input focus through the windows in the order opened, same as Alt + Esc.
- ☐ Ctrl + Alt + Shift + Esc: Cycle the input focus through the windows in the order opened, same as Alt + Esc.
- ☐ Alt + Shift + Esc: Similar to Alt + Esc, cycle focus backward through windows. You can switch between moving backward or forward by holding or releasing the Shift key.
- ☐ Windows: Display or hide the Start menu.
- ☐ Applications: Display the shortcut menu for the selected item.
- ☐ Print Screen: Copy an image of the screen.
- ☐ Ctrl + Print Screen: Copy an image of the screen.
- ☐ Alt + Print Screen: Copy an image of the current window.
- ☐ Ctrl + Break: May cause some programs to stop executing a script.
- ☐ Delete: Delete selected items.
- ☐ Shift + Delete: Delete the selected item permanently without placing the item in the Recycle Bin.
- ☐ Alt + Home: Go to your Home page (browser).
- ☐ Ctrl + Page Up: Move backward through tabs (same as Ctrl + Shift + Tab).
- ☐ Ctrl + Page Down: Move forward through tabs (same as Ctrl + Tab).
- ☐ Alt + Up Arrow: Move selected item up in the Favorites list in the Organize Favorites dialog box (browser).
- ☐ Alt + Down Arrow: Move selected item down in the Favorites list in the Organize Favorites dialog box (browser).
- ☐ Alt + Left Arrow: Go to the previous page (browser).
- ☐ Alt + Right Arrow: Go to the next page (browser).

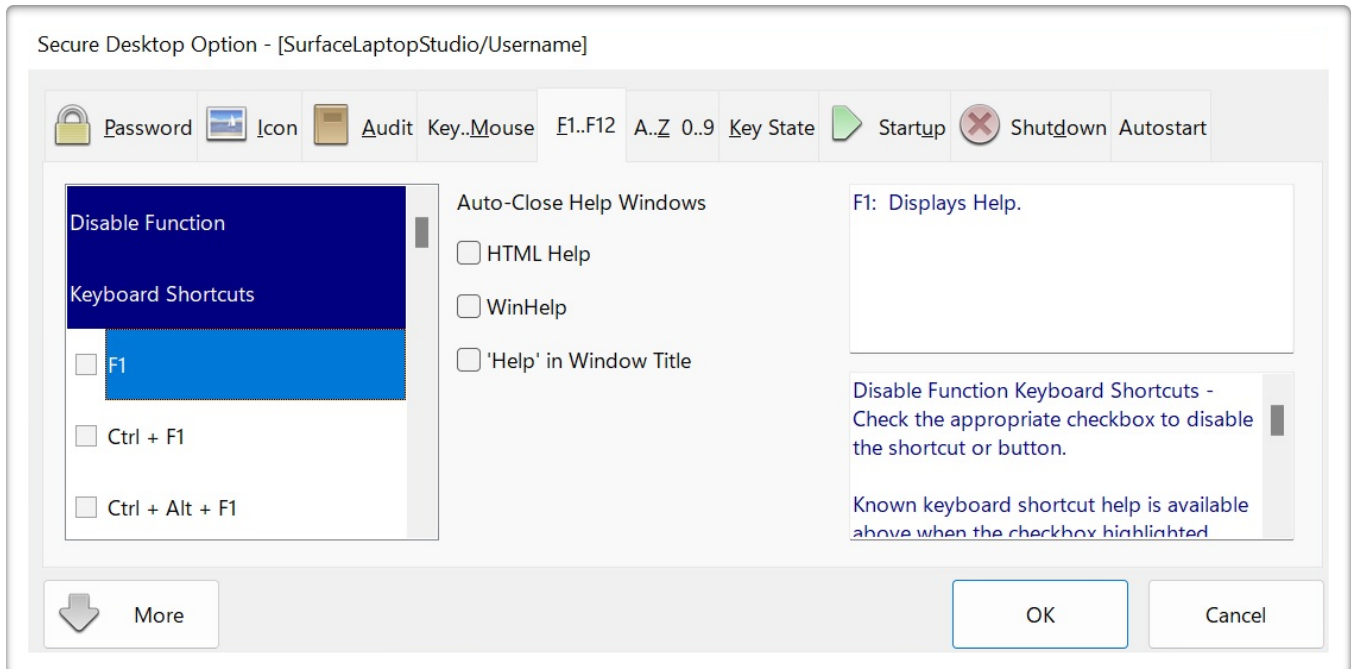
- ☐ Alt + Space: Display shortcut menu for the active window.
- ☐ Alt + Shift + Space: Same as Alt + Space, display shortcut menu for the active window.
- ☐ Alt + Enter: View properties for the selected item.
- ☐ Ctrl + Ins: Copy the selected item.
- ☐ Shift + Ins: Paste the selected item.

Disable Mouse Buttons

- ☐ Right: Displays context-sensitive pop-up menu.
- ☐ Shift Left: Creates a new browser window when clicking on a link.
- ☐ X1: Go to the previous page (browser).
- ☐ X2: Go to the next page (browser).



Secure Desktop Tools | Secure Desktop tab | Option button | F1..F12 tab



- ☐ F1: Displays Help.
- ☐ Ctrl + F1: Internet Explorer brings up help with Ctrl + F1.
- ☐ Shift + F1: Internet Explorer brings up help with Shift + F1.
- ☐ Ctrl + Shift + F1: Internet Explorer brings up help with Ctrl + Shift + F1.
- ☐ Ctrl + Alt + Shift + F1: Internet Explorer brings up help with Ctrl + Alt + Shift + F1.
- ☐ Alt + F4: Alt + F4 or Alt + Shift + F4 closes a window.
- ☐ Alt + Shift + F4: Alt + F4 or Alt + Shift + F4 closes a window.
- ☐ Ctrl + F4: This is used in some software packages to shut-down an application.

Auto-Close Help Windows

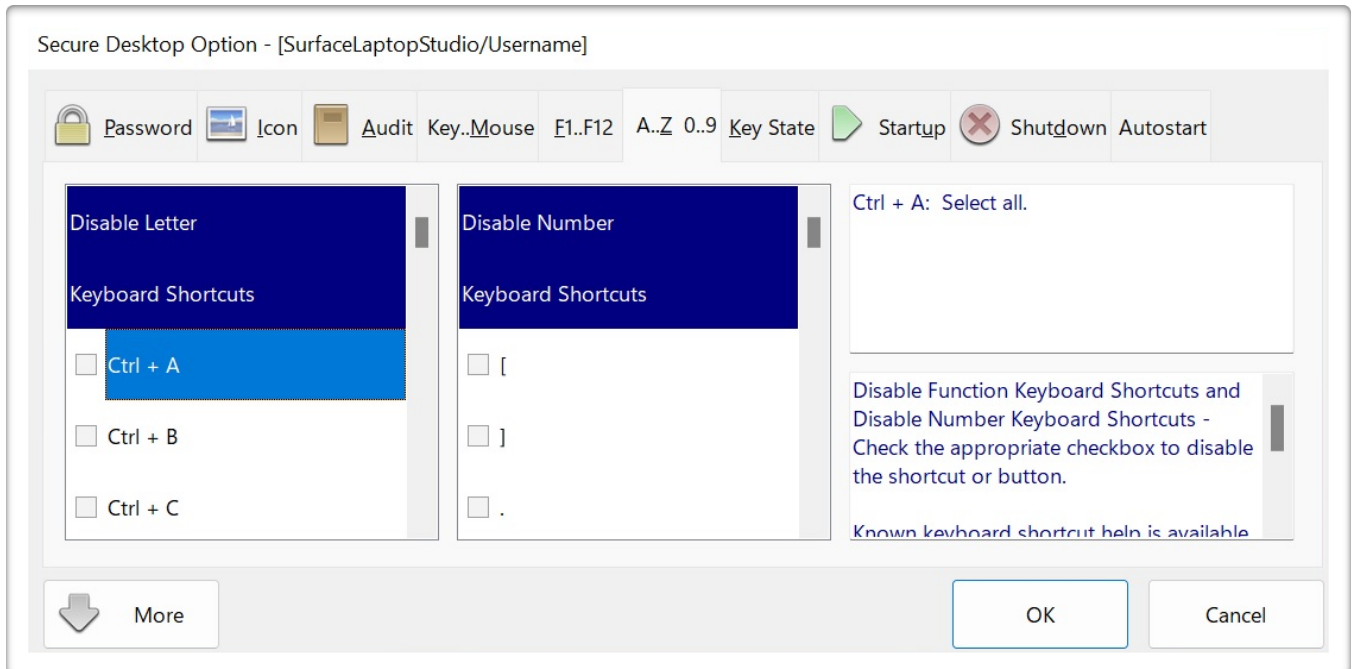
☐ HTML Help - Microsoft created a new help system that is HTML based and requires components that come with Internet Explorer. Secure Desktop disables this help by looking for windows that have a system menu with the menu item "Jump to URL..." within it. When it finds this kind of window, it closes it, regardless of what application may have brought up the window.

☐ WinHelp - Secure Desktop disables this traditional help by looking for and automatically closing the following two kinds of windows:

- 1) If the window has menu items, File, Edit, Bookmark, Options, Help. Note that a help file may modify these menu items, so this is not a guarantee. If this is the case, you can use the Window Wizard to disable a help window.
- 2) If the window has a caption that begins with "HELP TOPICS:" This window would be the table of contents for a WinHelp file.
- 3) 'Help' in Window Title - If the window has the word 'help' in it anywhere. Some programs have created help windows outside of the Windows help system.



Secure Desktop Tools | Secure Desktop tab | Option button | A..Z 0..9 tab



- | | |
|------------------------------------|---|
| <input type="checkbox"/> Ctrl + A: | Select all. |
| <input type="checkbox"/> Ctrl + B: | Open the Organize Favorites dialog box (browser). |
| <input type="checkbox"/> Ctrl + C: | Copy selected items. |
| <input type="checkbox"/> Ctrl + D: | Add the current page to your favorites (browser). |
| <input type="checkbox"/> Ctrl + E: | Open Search in Explorer bar (browser). |
| <input type="checkbox"/> Ctrl + F: | Opens the Find dialog box. |
| <input type="checkbox"/> Ctrl + H: | Open History in Explorer bar (browser). |
| <input type="checkbox"/> Ctrl + I: | Open Favorites in Explorer bar (browser). |
| <input type="checkbox"/> Ctrl + N: | Opens a new blank document. |
| <input type="checkbox"/> Ctrl + O: | Opens the Open dialog box. |

- ☐ Ctrl + P: Opens the Print dialog box.
- ☐ Ctrl + S: Saves the document that currently has the input focus.
- ☐ Ctrl + V: Paste, cut, or copied items.
- ☐ Ctrl + W: Close the current window (browser).
- ☐ Ctrl + X: Cut selected items.
- ☐ Ctrl + Y: Redo the last action.
- ☐ Ctrl + Z: Undo the last action.
- ☐ Ctrl + Shift + Q: Used By Some Multimedia Programs To Exit.

**Secure Desktop Tools | Secure Desktop tab | Option button | Key State tab**

Secure Desktop Option - [SurfaceLaptopStudio/Username]

Icons: Password, Icon, Audit, Key..Mouse, F1..F12, A..Z 0..9, Key State, Startup, Shutdown, Autostart

Num Lock Key: Do Nothing

Caps Lock Key: Do Nothing

Scroll Lock Key: Do Nothing

☐ Disable StickyKeys (Shift key 5 times)

☐ Disable FilterKeys (Hold down Right Shift key for 8 seconds)

☐ Disable ToggleKeys (Hold down Num Lock key for 5 seconds)

The Num Lock, Caps Lock, and Scroll Lock keys are unique in that they have a "state" associated with them. Rather than disable a keyboard shortcut, Secure Desktop forces these to be on or off, all of the time. If you have a program where passwords are case sensitive, be careful with the caps lock, as you may not be able to enter the password. Secure Desktop passwords are not case sensitive. Windows passwords are case sensitive, however Secure Desktop is not running yet during the Windows Login,

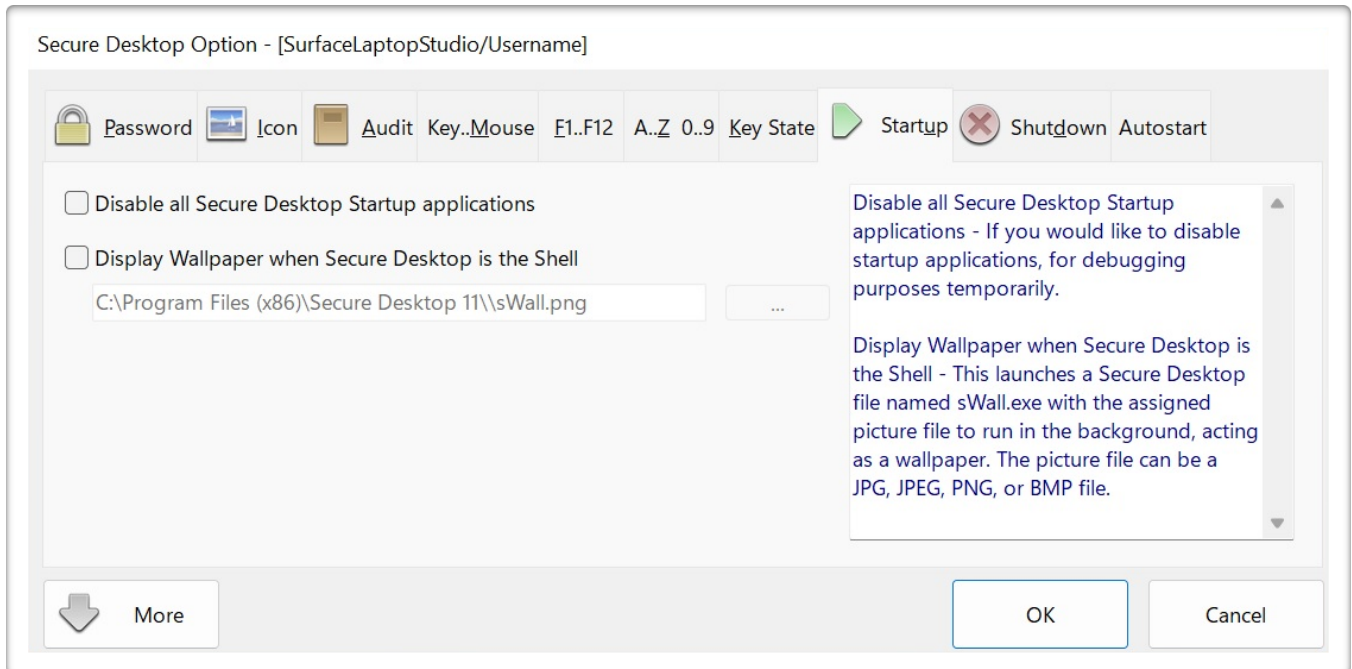
More OK Cancel

The Num Lock, Caps Lock, and Scroll Lock keys are unique in that they have a "state" associated with them. Rather than disable a keyboard shortcut, Secure Desktop forces these to be on or off, all of the time. If you have a program where passwords are case sensitive, be careful with the caps lock, as you may not be able to enter the password. Secure Desktop passwords are not case sensitive. Windows passwords are case sensitive, however Secure Desktop is not running yet during the Windows Logon, so this password would not be affected.

Accessibility Options Shortcuts can be disabled. Windows Settings have configurations for Accessibility Options shortcuts; we provide the ability within Secure Desktop for convenience. Note that when these shortcuts are disabled for a given user, Secure Desktop does not re-enable them unless explicitly set in this dialog.



Secure Desktop Tools | Secure Desktop tab | Option button | Startup tab



- ☐ Disable all Secure Desktop Startup applications - If you would like to disable startup applications, for debugging purposes temporarily.
- ☐ Display Wallpaper when Secure Desktop is the Shell - This launches a Secure Desktop program named sWall.exe with the assigned picture file to run in the background, acting as a wallpaper. The picture file can be a JPG, JPEG, PNG, or BMP file.



Secure Desktop Tools | Secure Desktop tab | Option button | Shutdown tab

Secure Desktop Option - [SurfaceLaptopStudio/Username]

☐ Password
 ☐ Icon
 ☐ Audit
 ☐ Key..Mouse
 ☐ F1..F12
 ☐ A..Z
 ☐ 0..9
 ☐ Key State
 ☐ Startup
 ☒ Shutdown
 ☐ Autostart

Shutdown/Restart/Logoff Ask Permission Before Exit

Disable Options In Shut Down Dialog

☐ Shut Down
 ☐ Restart
 ☐ Log Off

Set Default Option In Shut Down Dialog

☒ Shut Down
 ☐ Restart
 ☐ Log Off

Shutdown/Restart/Logoff - Choose if you would like to force a shutdown. If a program, such as Notepad, has an open document - not saved, that data would be lost. This setting is not for a specific window. It is how the actual exit will work after any of the windows in the shutdown wizard have been closed.

Disable Options In Shut Down Dialog - In the shutdown dialog, there usually are 3 different options available to the user.

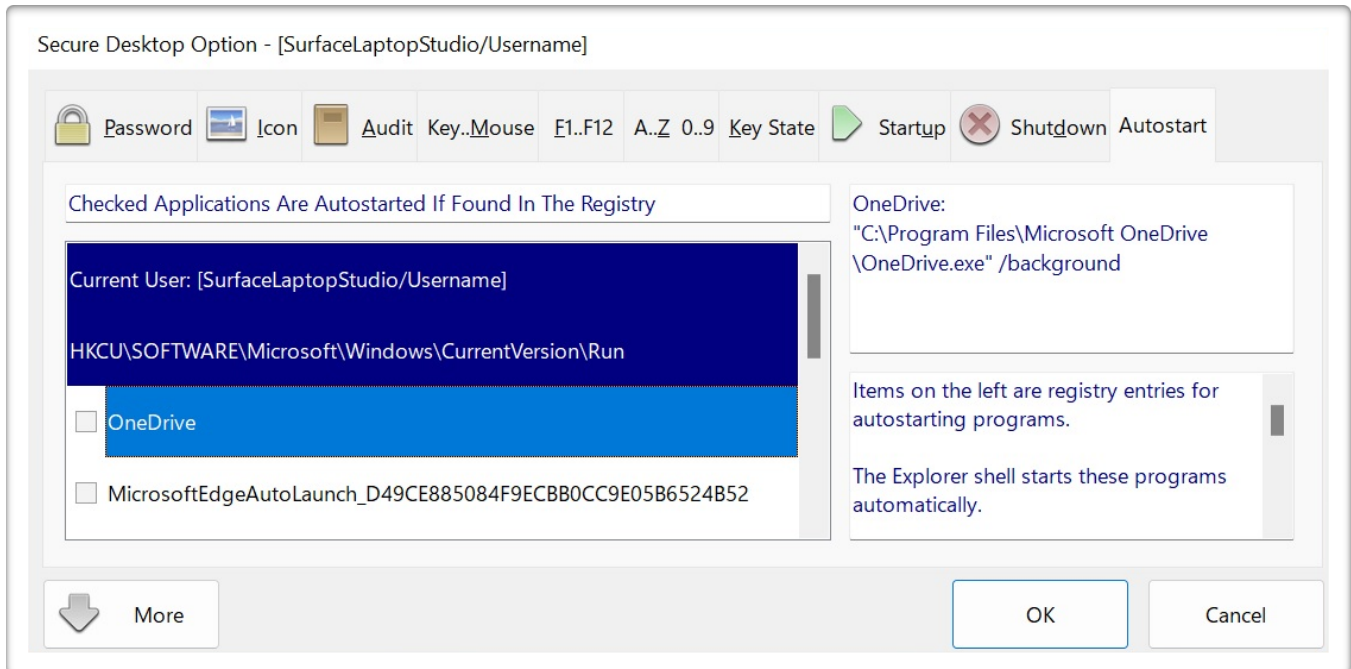
Shutdown/Restart/Logoff - Choose if you would like to force a shutdown. If a program, such as Notepad, has an open document - not saved, that data would be lost. This setting is not for a specific window. It is how the actual exit will work after any of the windows in the shutdown wizard have been closed.

Disable Options In Shut Down Dialog - In the shutdown dialog, there usually are three different options available to the user. Using these checkboxes, you can choose to disable the ☐ Shut down, ☐ Restart, or the ☐ Log Off portion of the dialog.

Set Default Option In Shut Down Dialog - This sets which of the enabled 3 options will be checked when the Shut Down Dialog is displayed.



Secure Desktop Tools | Secure Desktop tab | Option button | Autostart tab



Items on the left are registry entries for autostarting programs.

The Explorer shell starts these programs automatically.

These registry entries will now be started by Secure Desktop, if the following conditions are met:

- 1) If the registry entry is checked.
- 2) If the path to the exe file exists when the Secure Desktop is started as the shell.
- 3) If the registry key name is the exact same in the registry as it was when Autostart was configured.
- 3a) If the registry key name is the exact same for the first several letters of MicrosoftEdgeAutoLaunch in the registry as it was when Autostart was configured.

These registry entries may change when adding or removing programs, or changing settings within a program.

Secure Desktop, when starting as the shell, will start what is in the registry entry, providing the above conditions are met.

We recommend only checking items for programs that are necessary for the user when Secure Desktop is the shell. Please use caution, as sometimes Malware is found in these registry locations.



Secure Desktop Tools | Secure Desktop tab | Window button | Step 1

Window Wizard - Step 1 of 5 - [SurfaceLaptopStudio/Username]

☒ Manipulate a Window

☐ Edit an Existing Window Manipulation

☐ Close A Program During Shutdown

☐ Edit an Existing Program Close

Delete

Delete

Manipulate or edit a Window Manipulation - Secure Desktop will continuously monitor the system for these windows. It will then hide the window, minimize the window, maximize the window, close the window, or manipulate the menus within the window.

Close A Program During Shutdown - Each window that you choose will be sent a "close" command in the order that you have selected. This feature is for situations where an application may not want to close due to its dependency on another app.

Back Next Start Close

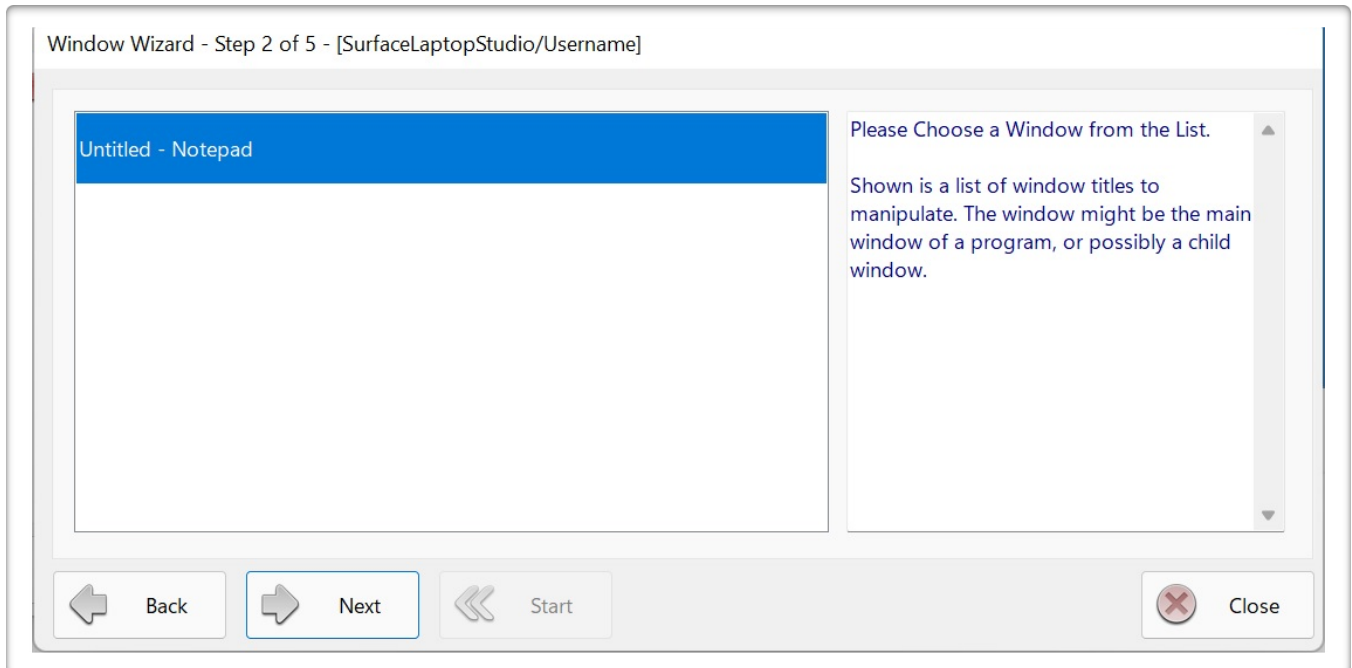
☐ Manipulate or edit a Window Manipulation - Secure Desktop will continuously monitor the system for these windows. It will then hide the window, minimize the window, maximize the window, close the window, or manipulate the menus within the window.

☐ Close A Program During Shutdown - Each window that you choose will be sent a "close" command in the order that you have selected. This feature is for situations where an application may not want to close due to its dependency on another app.

Start the application and bring up the window you wish to manipulate, then press the Next button.



Secure Desktop Tools | Secure Desktop tab | Window button | Step 2



Please Choose a Window from the List.

Shown is a list of window titles to manipulate. The window might be the main window of a program, or possibly a child window.



Secure Desktop Tools | Secure Desktop tab | Window button | Step 3

Window Wizard - Step 3 of 5 - [SurfaceLaptopStudio/Username]

Untitled - Notepad
&File &Edit F&ormat &View &Help

☒ Window Title After Dash (-)
☐ Window Title Before Dash (-)
☐ Exact Window Title
☐ Top-Level Menu (File Edit ... Help)
☐ BOTH Top-Level Menu AND Window Title After Dash (-)
☐ BOTH Top-Level Menu AND Window Title Before Dash (-)
☐ BOTH Top-Level Menu AND Exact Window Title

Please choose the best method to identify the window, by window title, or by the top-level menu.

Most document based application window titles have a dash, where one side of the dash character is the program title, and the other side of the dash character is the document title.

If the window has a top-level menu attached to the window, you can use that to identify the window also.

If the window does not have a top-level

Back Next Start Close

Please choose the best method to identify the window, by window title, or by the top-level menu.

Most document based application window titles have a dash, where one side of the dash character is the program title, and the other side of the dash character is the document title.

If the window has a top-level menu attached to the window, you can use that to identify the window also.

If the window does not have a top-level menu attached to the window, those menu options will not be displayed.



Secure Desktop Tools | Secure Desktop tab | Window button | Step 4

Window Wizard - Step 4 of 5 - [SurfaceLaptopStudio/Username]

Untitled - Notepad
&File &Edit F&ormat &View &Help
Window Title After Dash (-)

☐ Hide Window

☐ Force Window to be Maximized

☐ Force Window to be Minimized

☐ Force Window to be Always-On-Top

☐ Close Window

☒ Disable Menus within Window

Please choose an action to perform on the window.

Hide Window - set the visible flag for the window to hidden.

Force Window to be Maximized - forces the window to be full screen.

Force Window to be Minimized - forces the window to be minimized.

Force Window to be Always-On-Top - make the window stay on top of the Z-Order, regardless of which window has

Back

Next

Start

Close

Please choose an action to perform on the window.

Hide Window - set the visible flag for the window to hidden.

Force Window to be Maximized - forces the window to be full screen.

Force Window to be Minimized - forces the window to be minimized.

Force Window to be Always-On-Top - make the window stay on top of the Z-Order, regardless of which window has focus.

Close Window - sends the same command to the window as pressing the X icon in the upper right corner.

Disable Menus within Window - provides a way to disable both System Menus and Menus attached to the window.

If the window does not have System Menus or Menus attached to the window, the Disable Menus option will not be displayed.



Secure Desktop Tools | Secure Desktop tab | Window button | Step 5 |

Manipulate a Window

Window Wizard - Step 5 of 5 - [SurfaceLaptopStudio/Username]

Untitled - Notepad
&File &Edit F&ormat &View &Help
Window Title After Dash (-)
Disable Menus within Window

System Menus To Delete

☐ SYS 00 &Restore


☐ SYS 01 &Move

Main Menus To Delete

☐ MAIN 00 &File

☐ SUB 00 00 &NewCtrl+N

Name:

 Save

Check the system menu item and main menu items that you wish to remove, then enter a name and click Save.

The system menu is from an icon in the upper left of a window. Removing minimize, maximize, or close will typically eliminate the associated images in the top right corner of a window.

The main menu represents the typical File, Edit, etc. if that menu is attached to the window.

Back Next Start Close

Disable Menus

DISCLAIMER - This feature has been written based on customer requests. Although it should work with many Win32 applications, it does not work with every one of them. This feature should be used with caution, as unpredictable results may happen if you delete a menu in an application, and that application tries to "do something" with that menu. Please spend time testing your menu modifications before implementing it for an end-user.

NOTE ABOUT MICROSOFT PRODUCTS - Microsoft Office and other newer Microsoft Win32 Windows applications do not have a menu attached to the window. With these products, the menu items (File, Edit, etc.) will "light up" with a rectangle around them. This new menu system is a series of buttons in a cool bar. When you press one of these menu buttons, a popup menu appears. Due to this different menu architecture, Secure Desktop's menu disabling feature will not work. Please check out the Window Wizard's ability to automatically close a window, which may give you similar functionality. Many customers have expressed the desire to "disable" the ability to exit or close an application, or possibly using a program such as WordPad as a file viewer with no saving capabilities. This feature provides this capability. You can delete any menu, whether the system or regular, from the application, launched.

When this step is first loaded, we launch the application specified in the command line field, listing all of the menus found in the System Menu and the Main Menu of the application. Check the box next to the menu that you wish to remove. The values that are important here are the menu type and the co-ordinates of the menu item. There are three types of menus, SYS, MAIN, and SUB. Co-ordinates start at zero for the first menu. For instance, the SUB 00 00 &NewCtrl+N found in the Main Menus To Delete list, represents a sub-menu under the primary menu in the Main Menu, in this case, &File. The 00 represents the 1st menu item, including separators. Menu descriptions are displayed for visual reference but are not relevant to the actual menu deletion operation. The type of menu and co-ordinates are the critical part.



Secure Desktop Tools | Secure Desktop tab | Window button | Step 4

Window Wizard - Step 4 of 5 - [SurfaceLaptopStudio/Username]

Confirm Save As

Exact Window Title

☐ Hide Window

☐ Force Window to be Maximized

☐ Force Window to be Minimized

☐ Force Window to be Always-On-Top

☐ Close Window

☒ Send Key to a Message Window

Please choose an action to perform on the window.

Hide Window - set the visible flag for the window to hidden.

Force Window to be Maximized - forces the window to be full screen.

Force Window to be Minimized - forces the window to be minimized.

Force Window to be Always-On-Top - make the window stay on top of the Z-Order, regardless of which window has

Back

Next

Start

Close

Send key to a Message Window - provides a way to send Enter, Esc, Alt + I, Alt + N, Alt + Y, Alt + A, Alt + R, Alt + O, and Alt + H to a message window.

These keys represent keyboard shortcuts used for Ok, Cancel, Ignore, No, Yes, Abort or Yes to All, Retry, No to All, and Help buttons.

If the window has a Min or Max button, the Send key option is not displayed or available.



Secure Desktop Tools | Secure Desktop tab | Window button | Step 5 |


Send a Key to a Message Window

Window Wizard - Step 5 of 5 - [SurfaceLaptopStudio/Username]

Confirm Save As

Exact Window Title
Send Alt + N (No button)

| | |
|---|--|
| <input type="radio"/> Send Enter key (Ok or default) | <input type="radio"/> Send Alt + A (Abort or Yes to All) |
| <input type="radio"/> Send Esc key (Cancel button) | <input type="radio"/> Send Alt+ R (Retry button) |
| <input checked="" type="radio"/> Send Alt + N (No button) | <input type="radio"/> Send Alt + I (Ignore button) |
| <input type="radio"/> Send Alt + Y (Yes button) | <input type="radio"/> Send Alt + H (Help button) |
| <input type="radio"/> Send Alt + O (No to All button) | |





Name:  Save

Check the system menu item and main menu items that you wish to remove, then enter a name and click Save.

The system menu is from an icon in the upper left of a window. Removing minimize, maximize, or close will typically eliminate the associated images in the top right corner of a window.

The main menu represents the typical File, Edit, etc. if that menu is attached to the window.

If choosing to send a key to a message

 Back  Next  Start  Close

If choosing to send a key to a message window:

The following keys are the typical keyboard shortcuts used for common buttons in a message window:

Enter - Ok or default button

Esc - Cancel or Ignore buttons

Alt + N - No button

Alt + Y - Yes button

Alt + O - No to All button

Alt + A - Abort or Yes to All buttons

Alt + R - Retry button

Alt + I - Ignore button, Alt + H - Help button



Secure Desktop Tools | Secure Desktop tab | Window button | Step 5 |

Close a Program During Shutdown

Window Wizard - Step 5 of 5 - [SurfaceLaptopStudio/Username]

Untitled - Notepad
&File &Edit F&ormat &View &Help
Window Title After Dash (-)
Close Window During Shutdown. Time Delay: 0 secs

Append Insert Save

Untitled - Notepad - 0 Seconds Delay

Choose to Append or Insert this Program Closing configuration. Remember, the programs are closed in the order listed.
If editing an existing configuration, press the Save button.

Back Next Start Close

When choosing to close a program during shutdown in step 1, step 5 will look like the window above, rather than the step 5 image on the previous page, for manipulating a window.

Step 4 provides the capability of specifying the number of seconds to delay after closing the program.

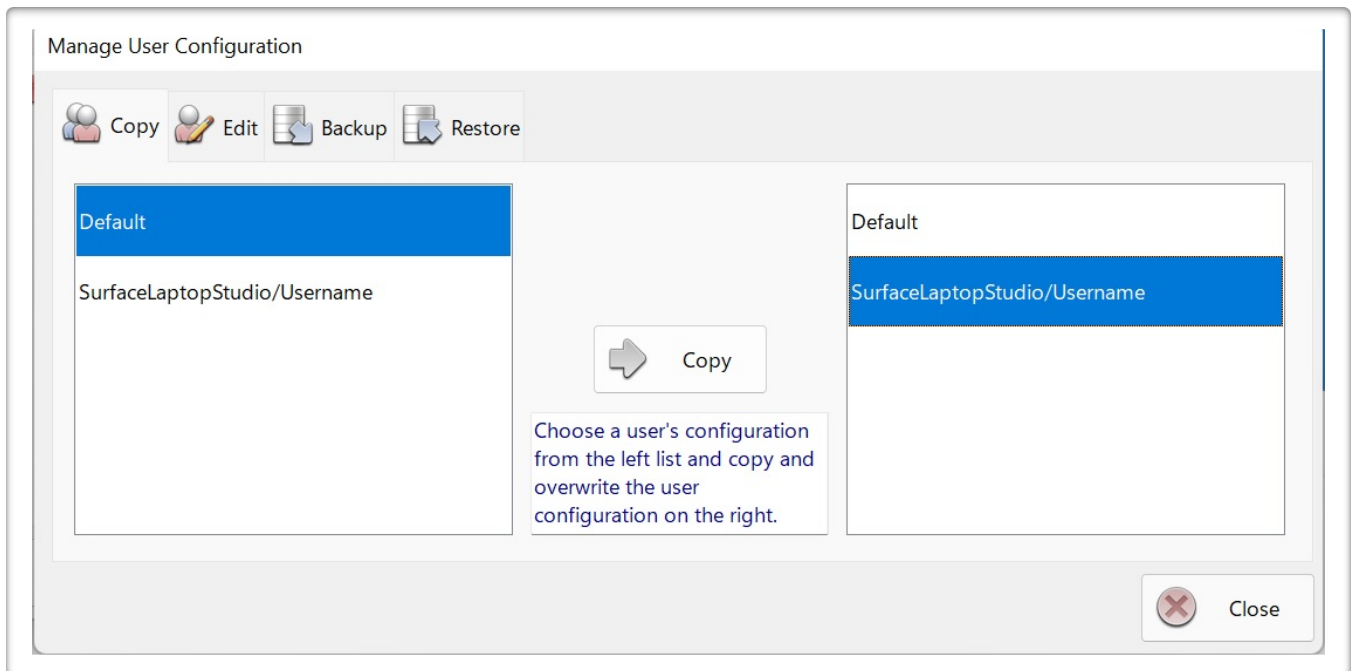
Choose to Append or Insert this Program Closing configuration. Remember, the programs are closed in the order listed.

If editing an existing configuration, press the Save button.



Secure Desktop Tools | Secure Desktop tab | Manage button |

Copy tab



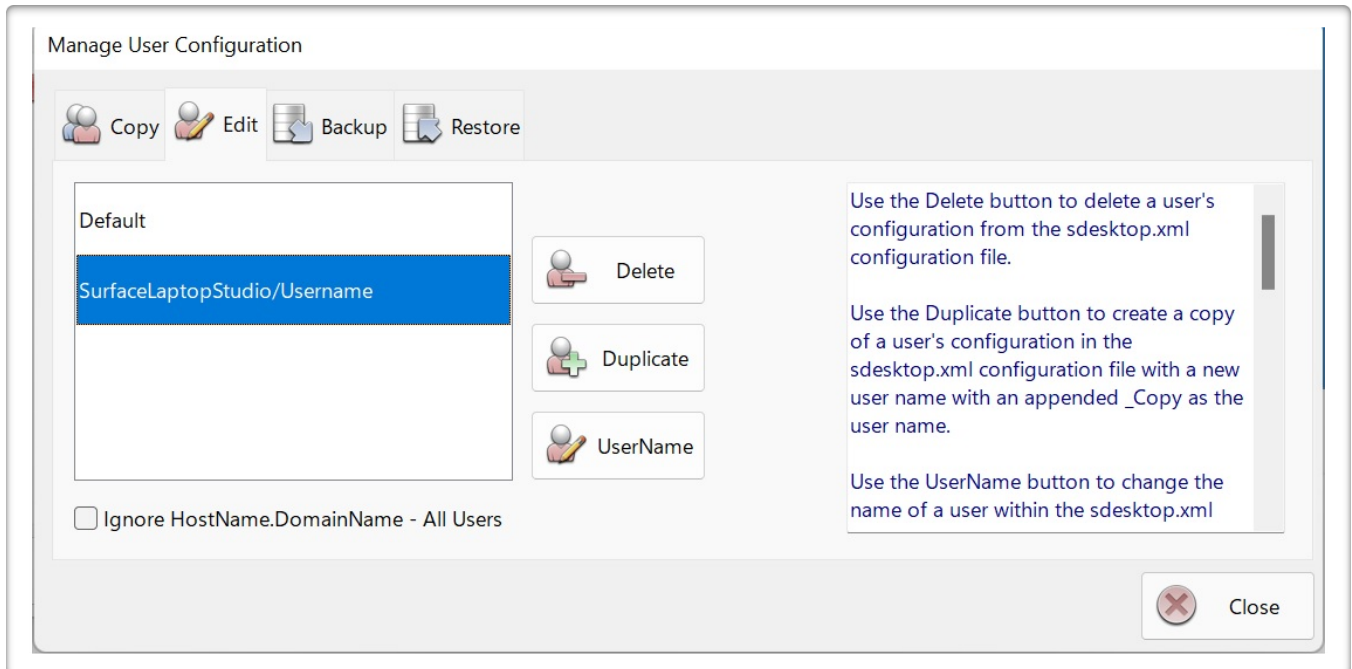
Choose a user's configuration from the left list and copy and overwrite the user configuration on the right.

You can not undo this operation.



Secure Desktop Tools | Secure Desktop tab | Manage button |

Edit tab



Use the Delete button to delete a user's configuration from the sdesktop.xml configuration file.

Use the Duplicate button to create a copy of a user's configuration in the sdesktop.xml configuration file with a new user name with an appended _Copy as the user name.

Use the UserName button to change the name of a user within the sdesktop.xml configuration file.

HostName.DomainName:

The fully qualified DNS name that uniquely identifies the computer. If the local machine is a node in a cluster, this field is the fully qualified DNS name of the local machine, not the name of the cluster virtual server.

The fully qualified DNS name is a combination of the DNS host name and the DNS domain name, using the form HostName.DomainName.

UserName:

The User's Logon Name.

Ignore HostName.DomainName - All Users checkbox: When checked, a user's configuration data read/write will be based on the UserName only — Secure Desktop ignores the HostName.DomainName stored in the sdesktop.xml file when looking up a user name.

If checked, the sdesktop.xml file will be much more portable for customers who copy the sdesktop.xml file to several identical computers.

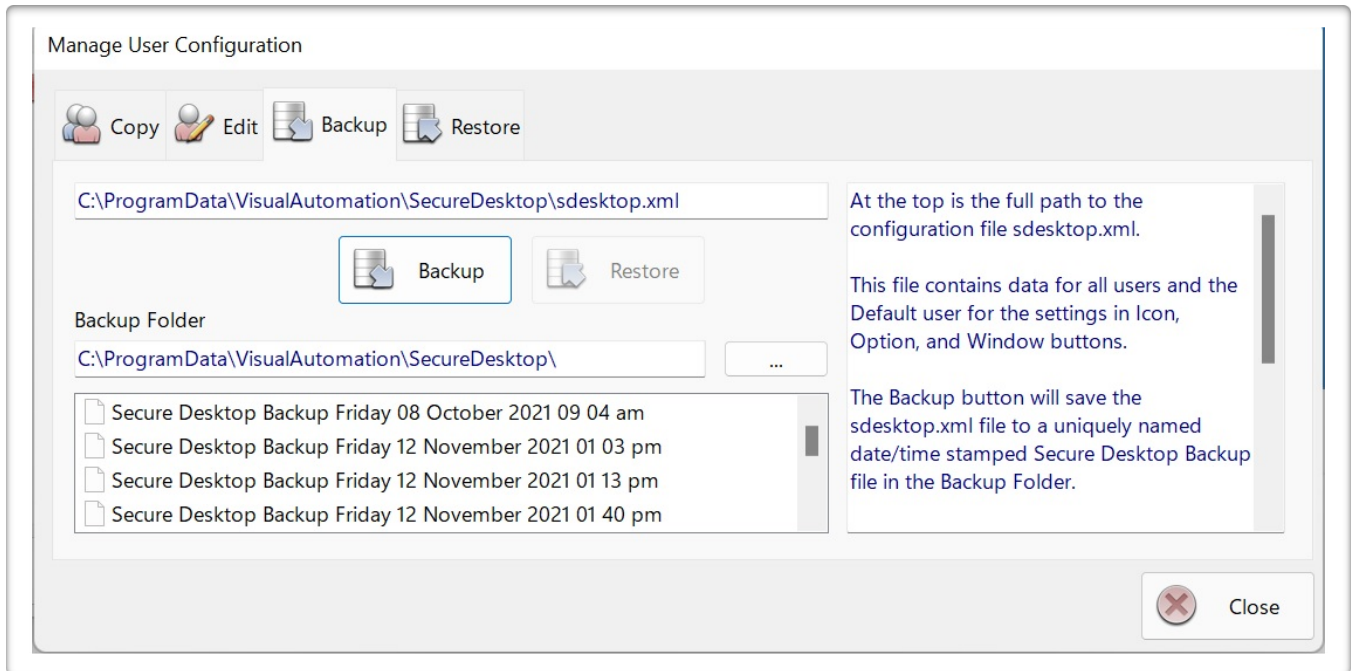


Edit tab | Edit UserName button

If it does not find that configuration, the Default settings are loaded.



Secure Desktop Tools | Secure Desktop tab | Manage button | Backup tab



At the top is the full path to the configuration file sdesktop.xml.

This file contains data for all users and the Default user for the settings in Icon, Option, and Window buttons.

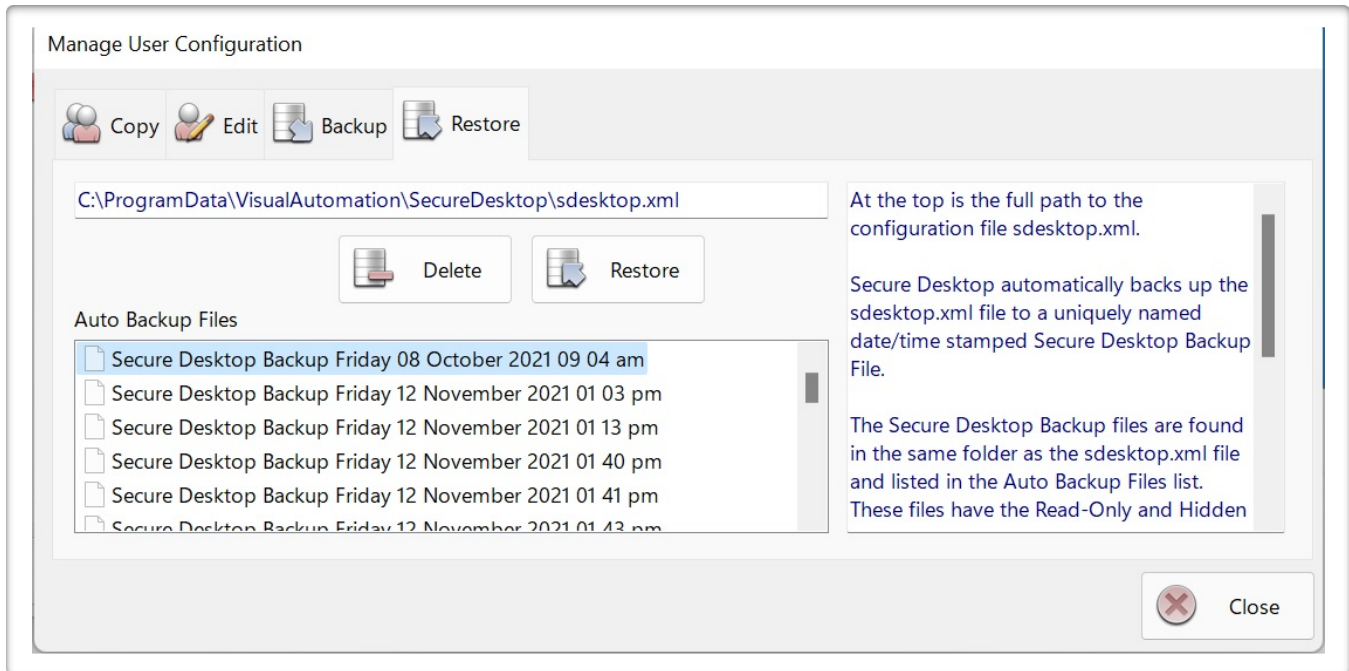
The Backup button will save the sdesktop.xml file to a uniquely named date/time stamped Secure Desktop Backup file in the Backup Folder.

The location of default Backup Folder is the same as the sdesktop.xml folder, but the user can select any write-access folder via the button labeled "...".

The Restore button will restore any uniquely named date/time stamped Secure Desktop Backup file listed in the Backup Folder.



Secure Desktop Tools | Secure Desktop tab | Manage button | Restore tab



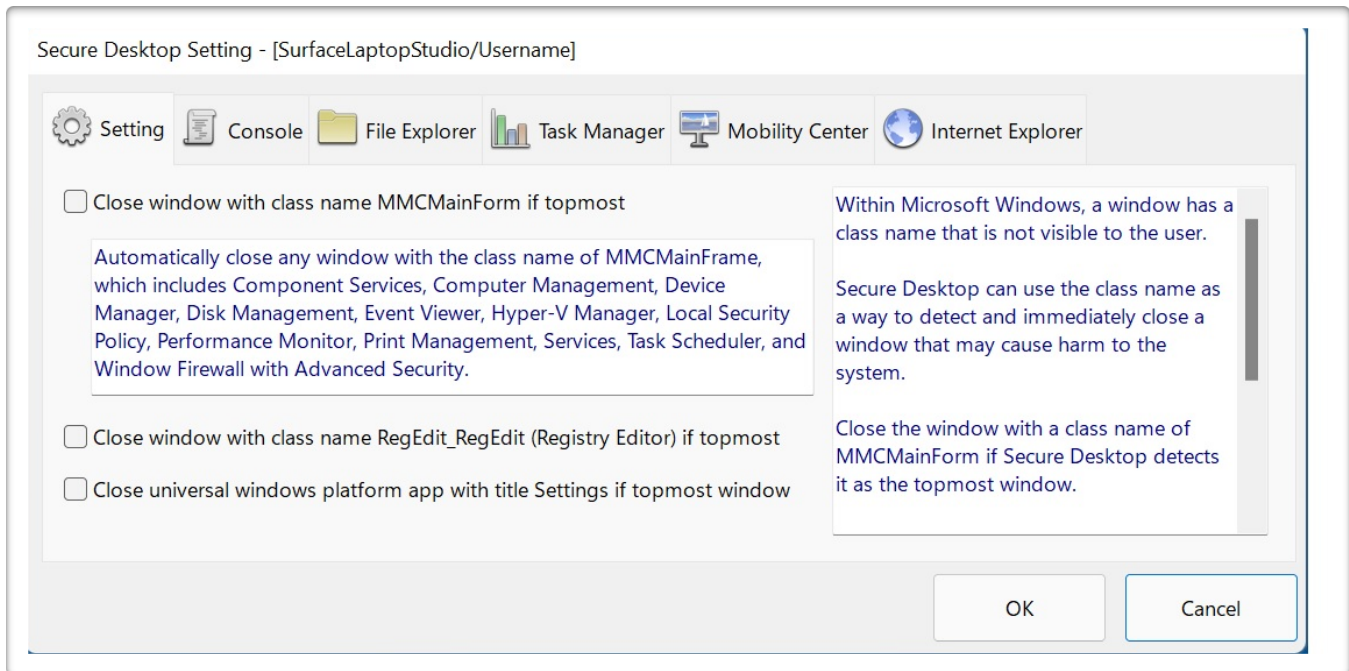
At the top is the full path to the configuration file sdesktop.xml.

Secure Desktop automatically backs up the sdesktop.xml file to a uniquely named date/time stamped Secure Desktop Backup File.

The Secure Desktop Backup files are found in the same folder as the sdesktop.xml file and listed in the Auto Backup Files list. These files have the Read-Only and Hidden file attributes.

The Restore button will restore any uniquely named date/time stamped Secure Desktop Backup file selected in the Auto Backup Files list.

The Delete button will delete the selected Secure Desktop Backup file shown in the Auto Backup Files list.

**Secure Desktop Tools | Secure Desktop tab | Setting button | Setting tab**

Automatically close any window with the class name of MMCMainFrame, which includes Component Services, Computer Management, Device Manager, Disk Management, Event Viewer, Hyper-V Manager, Local Security Policy, Performance Monitor, Print Management, Services, Task Scheduler, and Window Firewall with Advanced Security.

Within Microsoft Windows, a window has a class name that is not visible to the user.

Secure Desktop can use the class name as a way to detect and immediately close a window that may cause harm to the system.

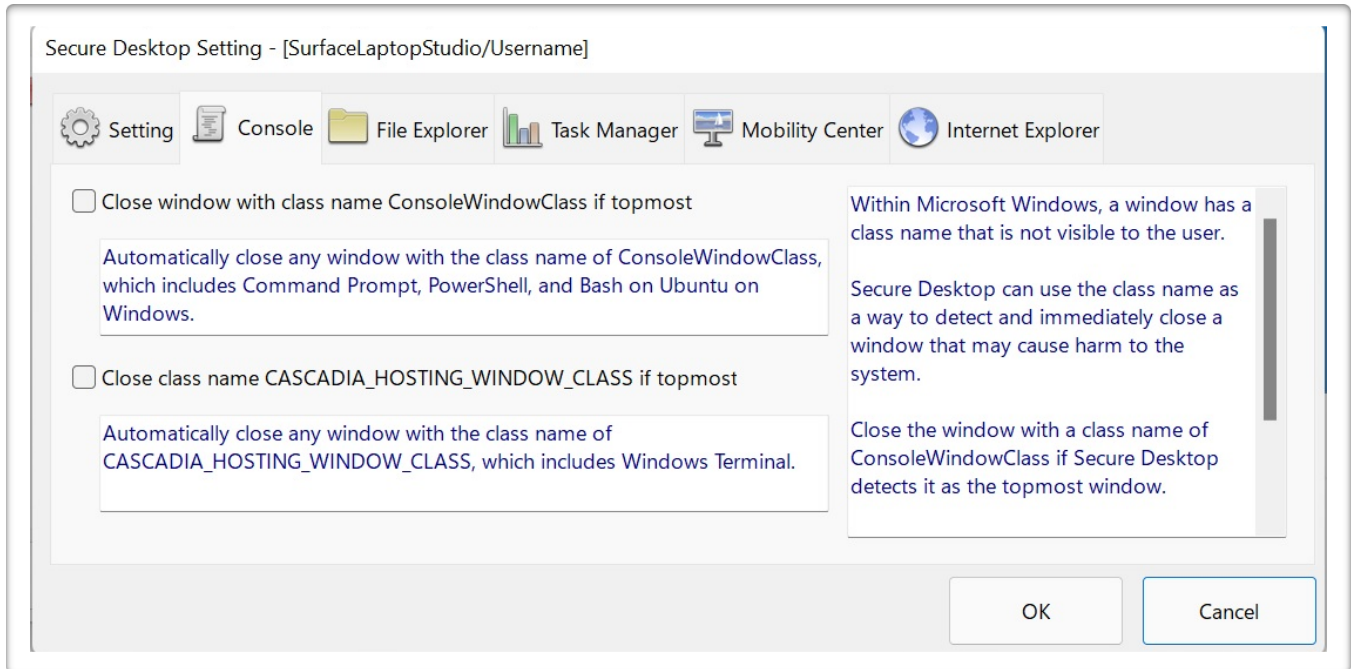
Close the window with a class name of MMCMainFrame if Secure Desktop detects it as the topmost window.

Close the window with a class name of RegEdit_RegEdit if Secure Desktop detects it as the topmost window.

Close the Universal Windows Platform app with the title Settings if Secure Desktop detects it as the topmost window.



Secure Desktop Tools | Secure Desktop tab | Setting button | Console tab



Automatically close any window with the class name of ConsoleWindowClass, which includes Command Prompt, PowerShell, and Bash on Ubuntu on Windows.

Within Microsoft Windows, a window has a class name that is not visible to the user.

Secure Desktop can use the class name as a way to detect and immediately close a window that may cause harm to the system.

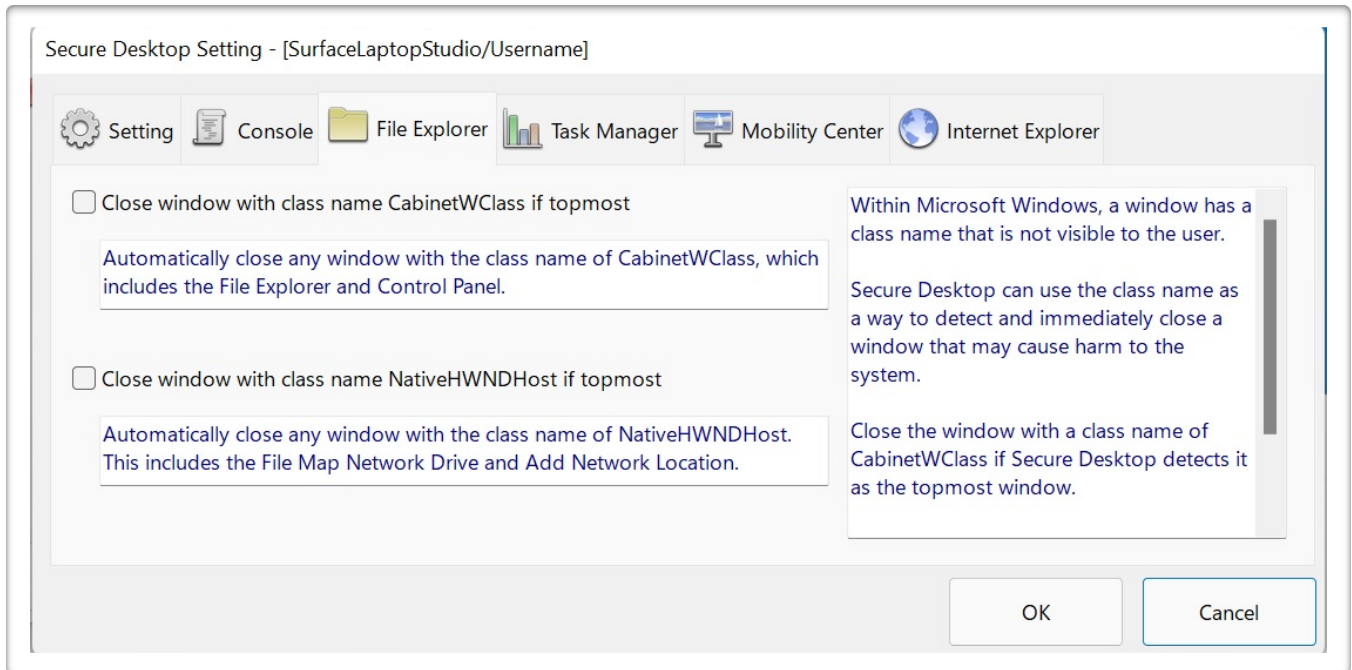
Close the window with a class name of ConsoleWindowClass if Secure Desktop detects it as the topmost window.

Close the window with a class name of CASCADIA_HOSTING_WINDOW_CLASS if Secure Desktop detects it as the topmost window.



Secure Desktop Tools | Secure Desktop tab | Setting button |

File Explorer tab



Automatically close any window with the class name of CabinetWClass, which includes the File Explorer and Control Panel.

Automatically close any window with the class name of NativeHWNDHost. This includes the File Map Network Drive and Add Network Location.

Within Microsoft Windows, a window has a class name that is not visible to the user.

Secure Desktop can use the class name as a way to detect and immediately close a window that may cause harm to the system.

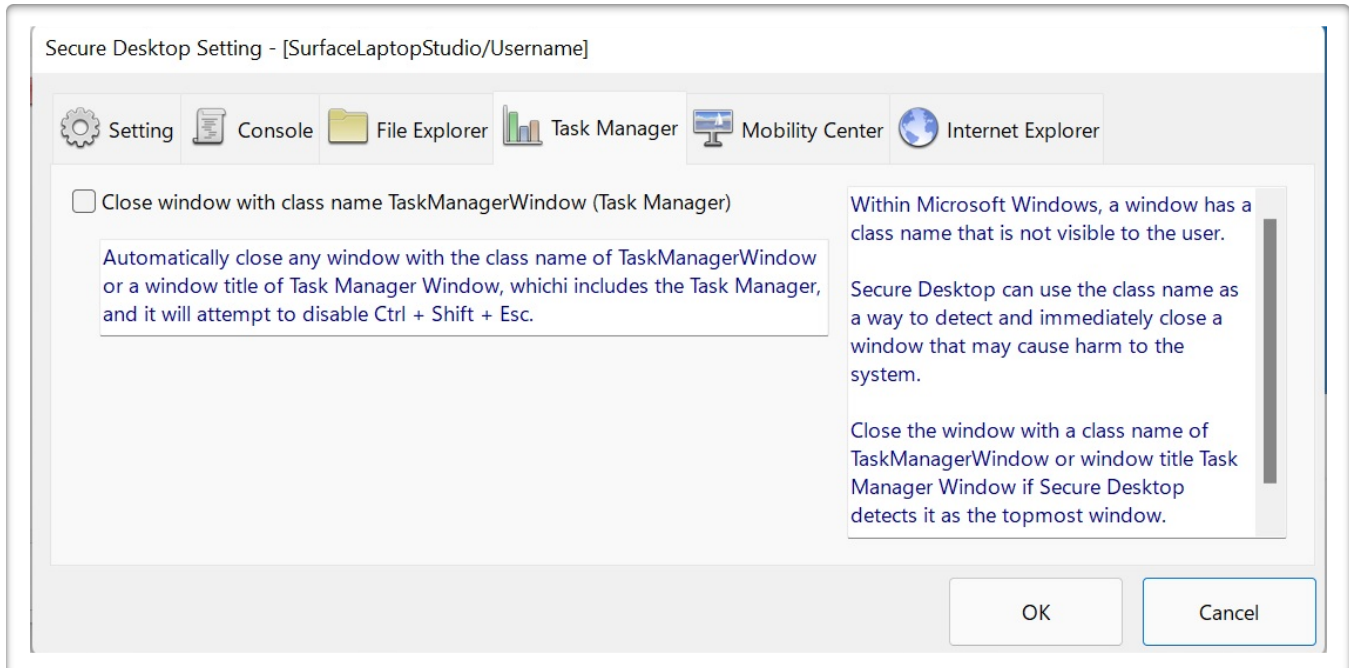
Close the window with a class name of CabinetWClass if Secure Desktop detects it as the topmost window.

Close the window with a class name of NativeHWNDHost if Secure Desktop detects it as the top most window.



Secure Desktop Tools | Secure Desktop tab | Setting button |

Task Manager tab



Automatically close any window with the class name of TaskManagerWindow or a window title of Task Manager Window, which includes the Task Manager, and it will attempt to disable Ctrl + Shift + Esc.

Within Microsoft Windows, a window has a class name that is not visible to the user.

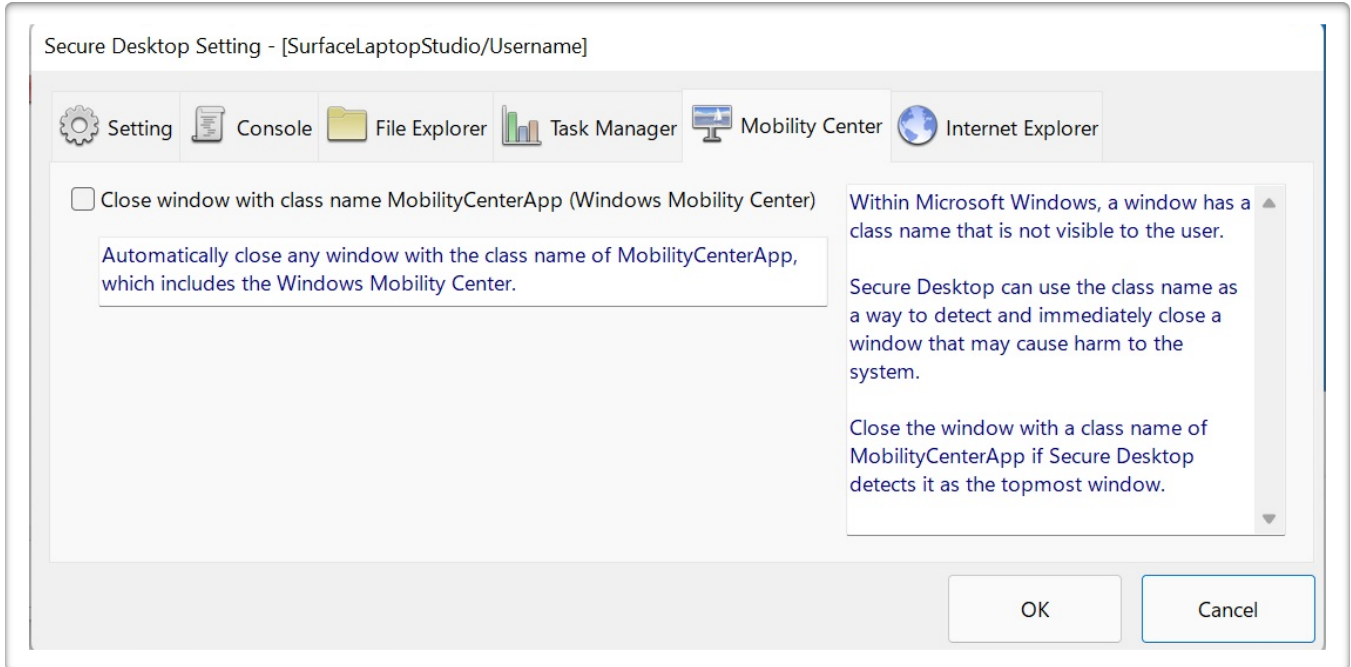
Secure Desktop can use the class name as a way to detect and immediately close a window that may cause harm to the system.

Close the window with a class name of TaskManagerWindow or window title Task Manager Window if Secure Desktop detects it as the topmost window.



Secure Desktop Tools | Secure Desktop tab | Setting button |

Mobility Center tab



Automatically close any window with the class name of MobilityCenterApp, which includes the Windows Mobility Center.

Within Microsoft Windows, a window has a class name that is not visible to the user.

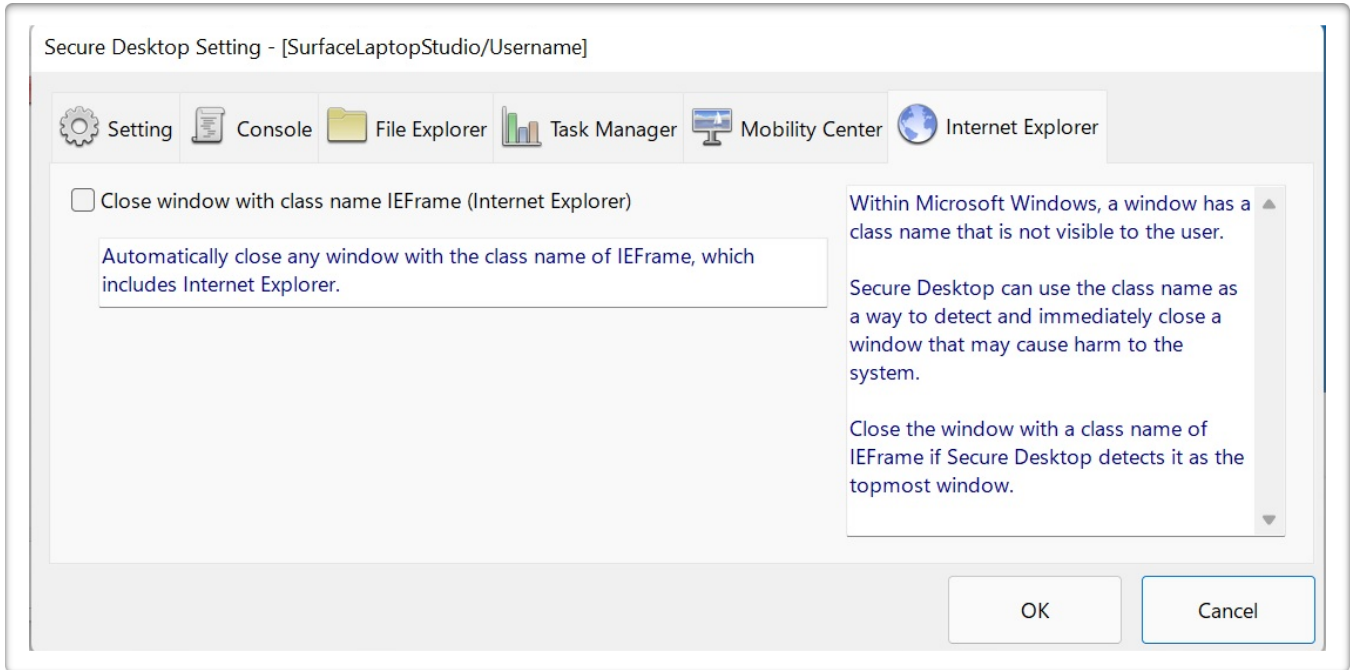
Secure Desktop can use the class name as a way to detect and immediately close a window that may cause harm to the system.

Close the window with a class name of MobilityCenterApp if Secure Desktop detects it as the topmost window.



Secure Desktop Tools | Secure Desktop tab | Setting button |

Internet Explorer tab



Automatically close any window with the class name of IEFram, which includes Internet Explorer.

Within Microsoft Windows, a window has a class name that is not visible to the user.

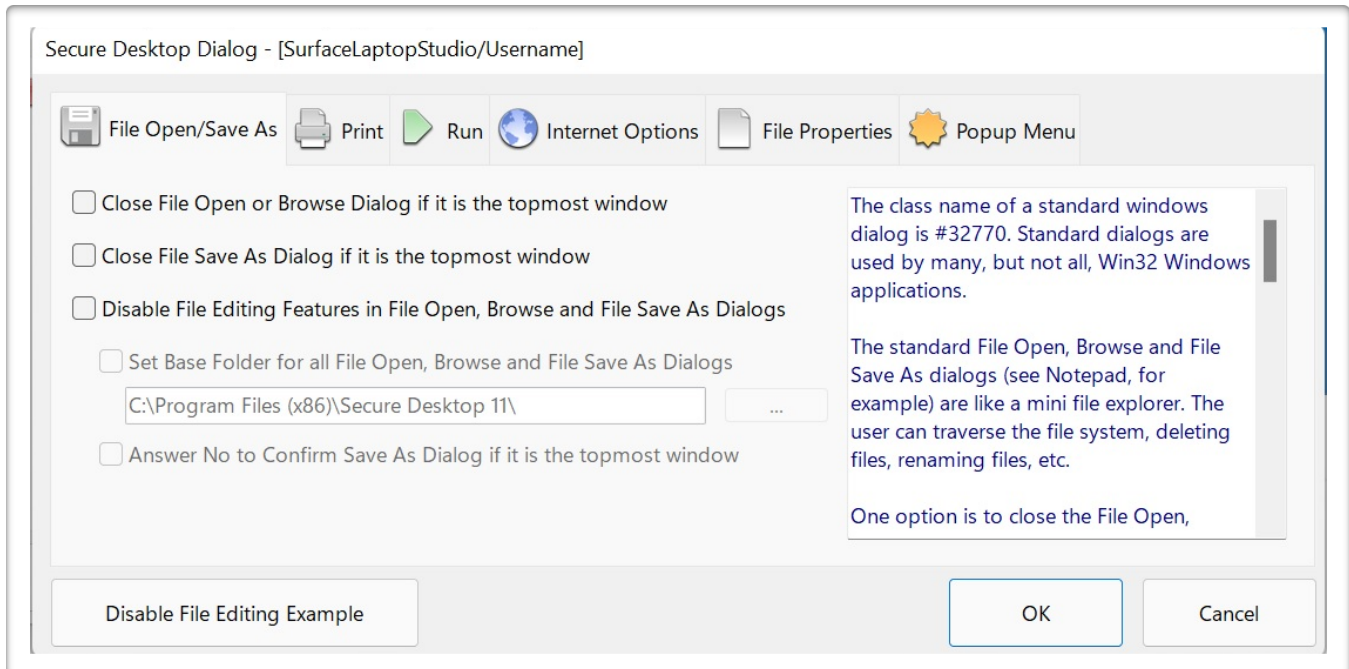
Secure Desktop can use the class name as a way to detect and immediately close a window that may cause harm to the system.

Close the window with a class name of IEFram if Secure Desktop detects it as the topmost window.



Secure Desktop Tools | Secure Desktop tab | Dialog button |

File Open/Save As tab



The class name of a standard windows dialog is #32770. Standard dialogs are used by many, but not all, Win32 Windows applications.

The standard File Open, Browse and File Save As dialogs (see Notepad, for example) are like a mini file explorer. The user can traverse the file system, deleting files, renaming files, etc.

One option is to close the File Open, Browse, or File Save As dialogs if Secure Desktop detects it as the topmost window, which may work well if the user does not need to open files after launching the program.

Another option is to disable the mouse and keyboard inputs to most of the user interface of the File Open, Browse and File Save As dialogs.

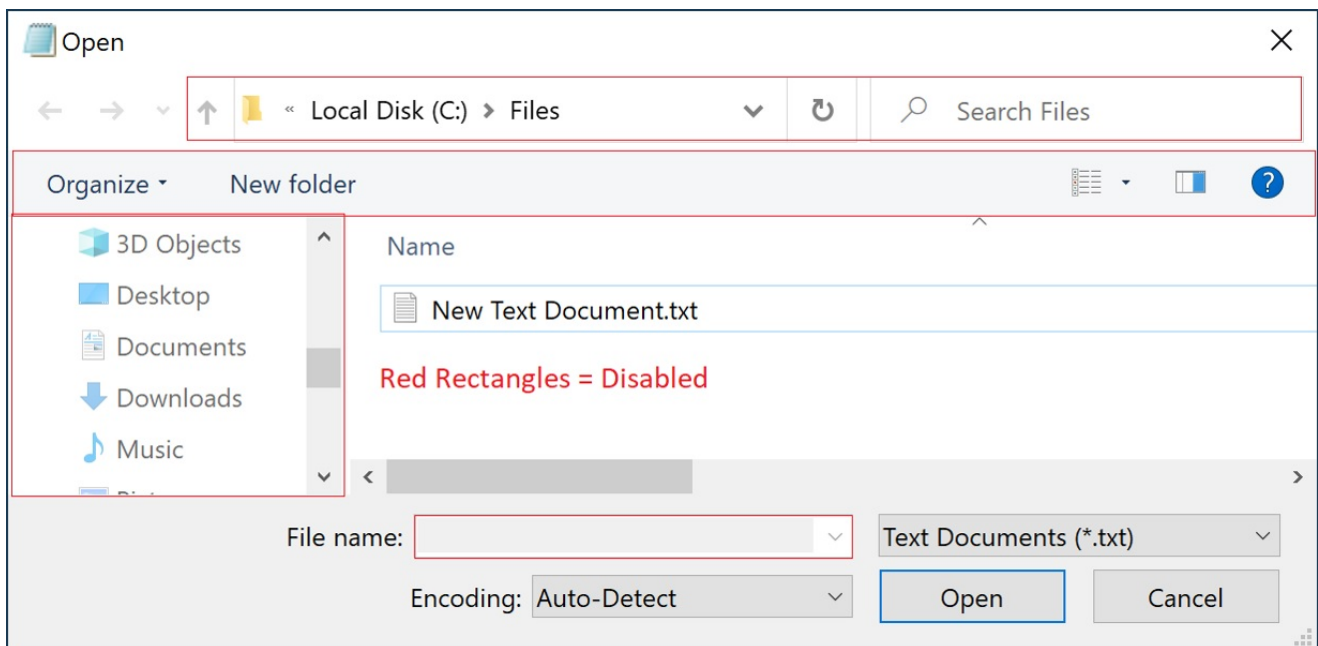
Disable toolbar, navigation, search, right mouse, long left mouse click, and the keys [; |].

Disable keyboard shortcuts F2, Alt + Enter, Ctrl + D, Ctrl + V, Shift + F10, Delete, Shift + Delete, Tab, Shift + Tab, Ctrl + Tab, Ctrl + Shift + Tab, Alt + Up, Alt + Down, Backspace.

If you do not check the Set Base Folder for all File Open, Browse and File Save As Dialogs checkbox, the user will not be able to change to another folder. The default File Open, Browse or File Save As folder for the program will not change.

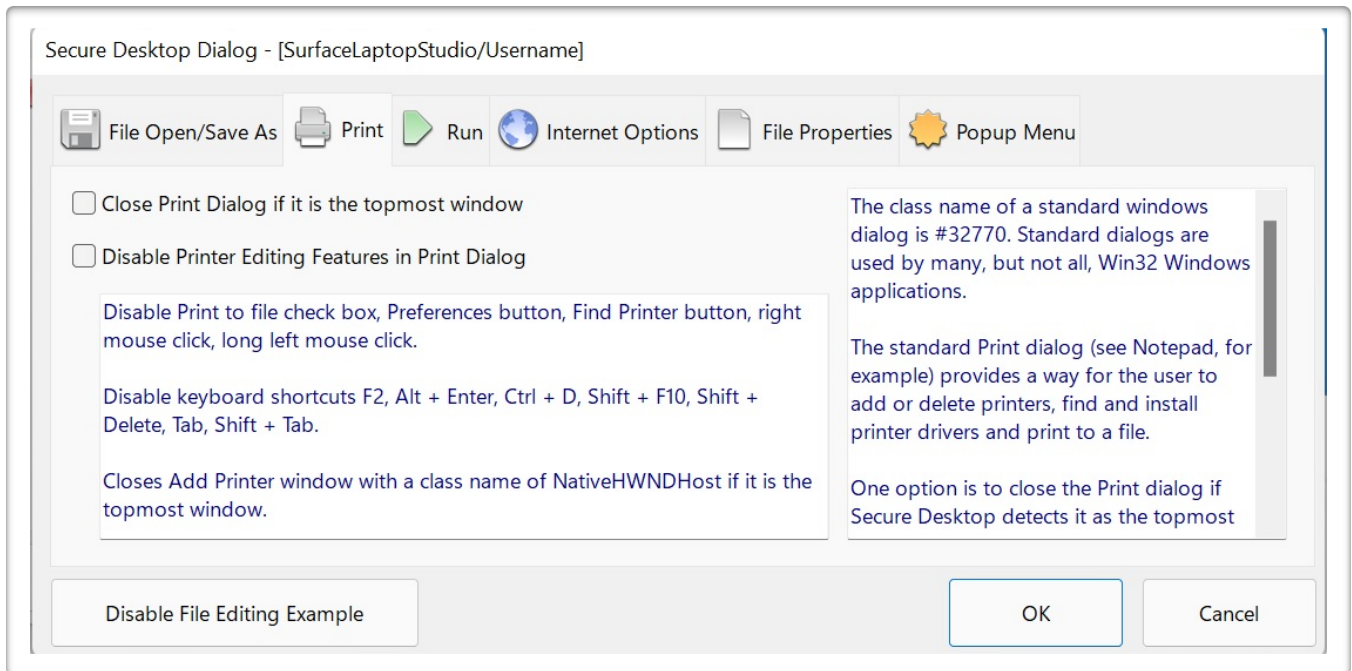
The mechanism for setting the base folder involves the clipboard. Therefore, whatever was in the clipboard may be replaced with the base folder string.

Answer No to Confirm Save As Dialog if it is the topmost window - When the user uses File Save As and chooses an existing file, they are prompted with a Confirm Save As Dialog with a Yes and No button. If this checkbox is checked, an Enter key will immediately be sent to close the Dialog (No button), preventing a file overwrite.





Secure Desktop Tools | Secure Desktop tab | Dialog button | Print tab



Disable Print to file check box, Preferences button, Find Printer button, right mouse click, long left mouse click.

Disable keyboard shortcuts F2, Alt + Enter, Ctrl + D, Shift + F10, Shift + Delete, Tab, Shift + Tab.

Closes Add Printer window with a class name of NativeHWNDHost if it is the topmost window.

The class name of a standard windows dialog is #32770. Standard dialogs are used by many, but not all, Win32 Windows applications.

The standard Print dialog (see Notepad, for example) provides a way for the user to add or delete printers, find and install printer drivers and print to a file.

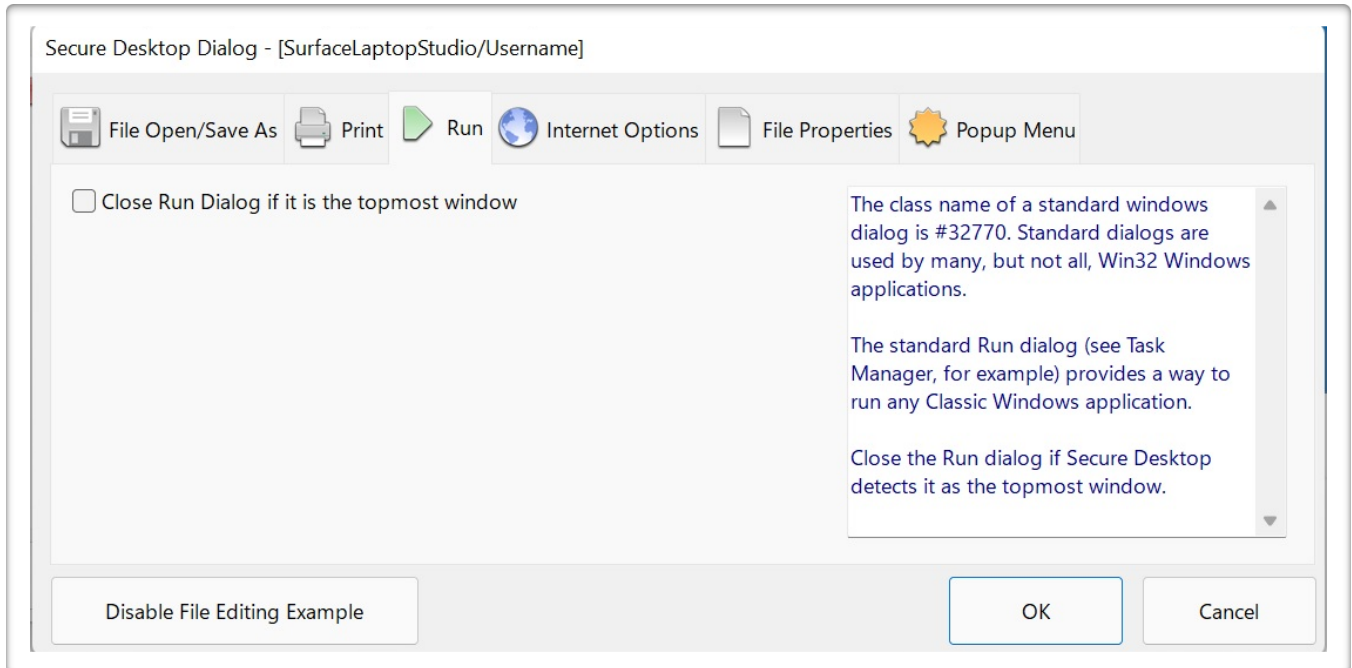
One option is to close the Print dialog if Secure Desktop detects it as the topmost window, which may work well if the user does not need to print.

Another option is to disable the mouse and keyboard inputs to most of the user interface of the Print dialog.

The result is that the user will not be able to add or delete printers or print to a file.



Secure Desktop Tools | Secure Desktop tab | Dialog button | Run tab



The class name of a standard windows dialog is #32770. Standard dialogs are used by many, but not all, Win32 Windows applications.

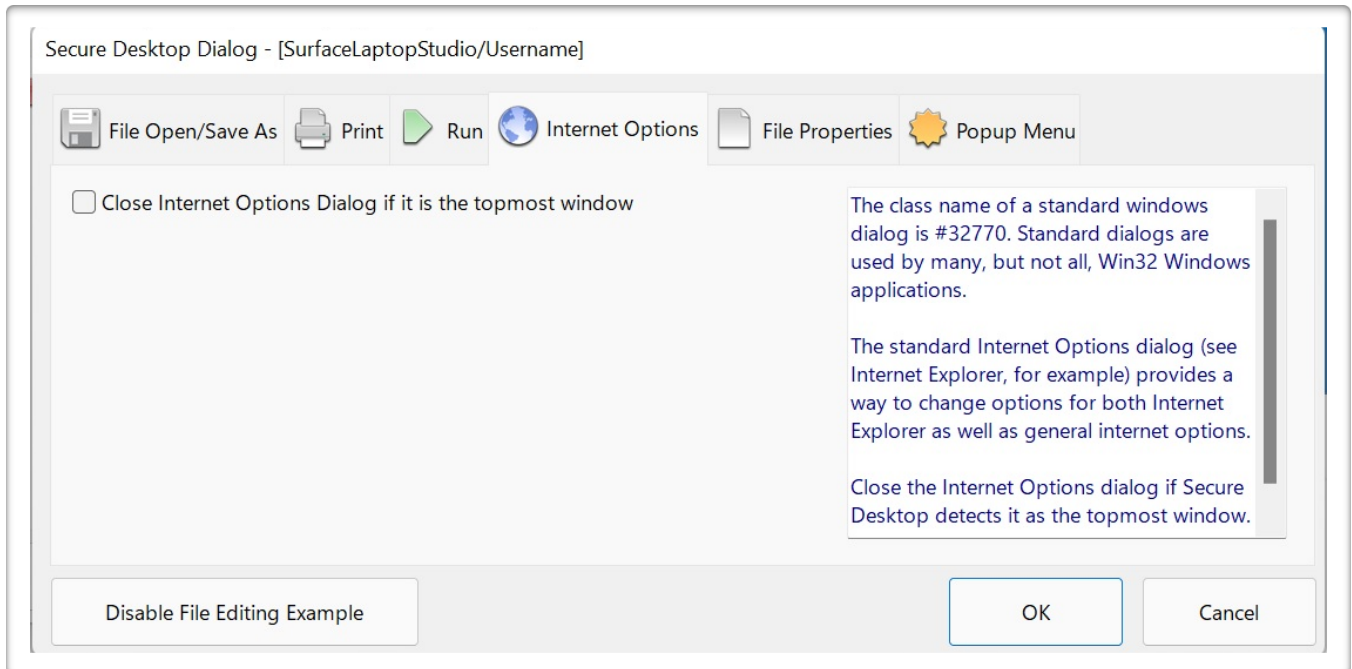
The standard Run dialog (see Task Manager, for example) provides a way to run any Classic Windows application.

Close the Run dialog if Secure Desktop detects it as the topmost window.



Secure Desktop Tools | Secure Desktop tab | Dialog button |

Internet Options tab



The class name of a standard windows dialog is #32770. Standard dialogs are used by many, but not all, Win32 Windows applications.

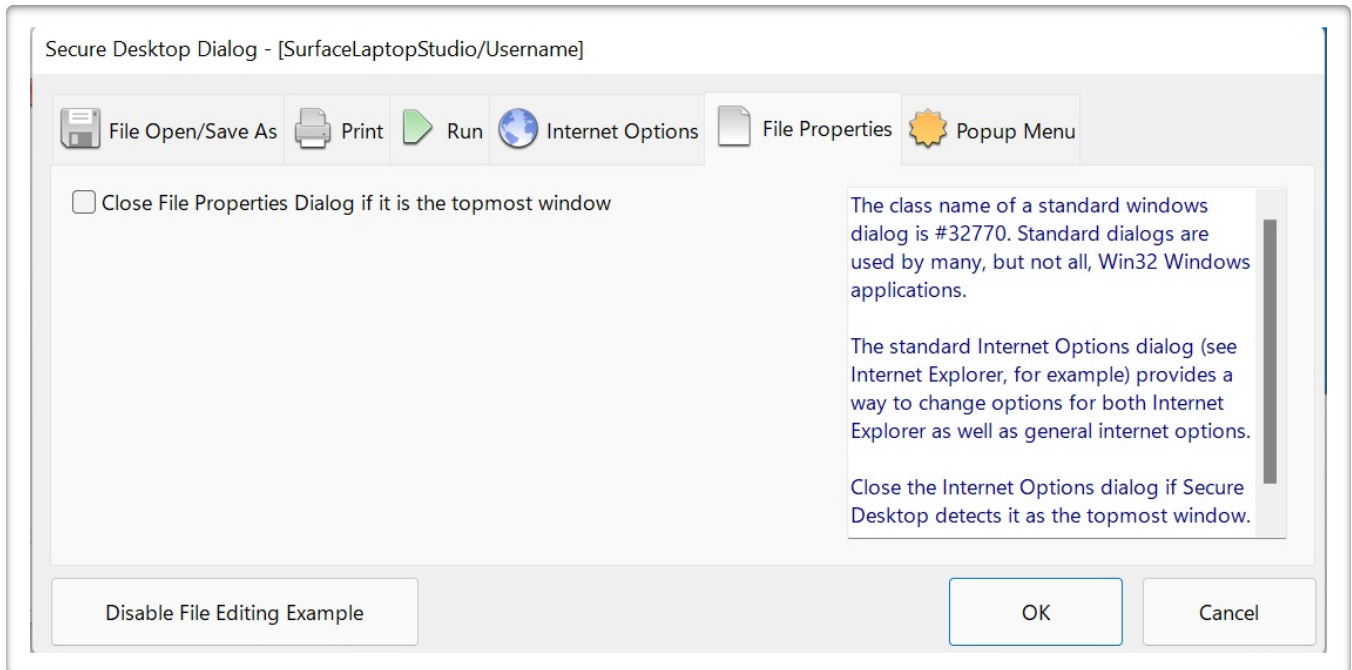
The standard Internet Options dialog (see Internet Explorer, for example) provides a way to change options for both Internet Explorer as well as general internet options.

Close the Internet Options dialog if Secure Desktop detects it as the topmost window.



Secure Desktop Tools | Secure Desktop tab | Dialog button |

File Properties tab



The class name of a standard windows dialog is #32770. Standard dialogs are used by many, but not all, Win32 Windows applications.

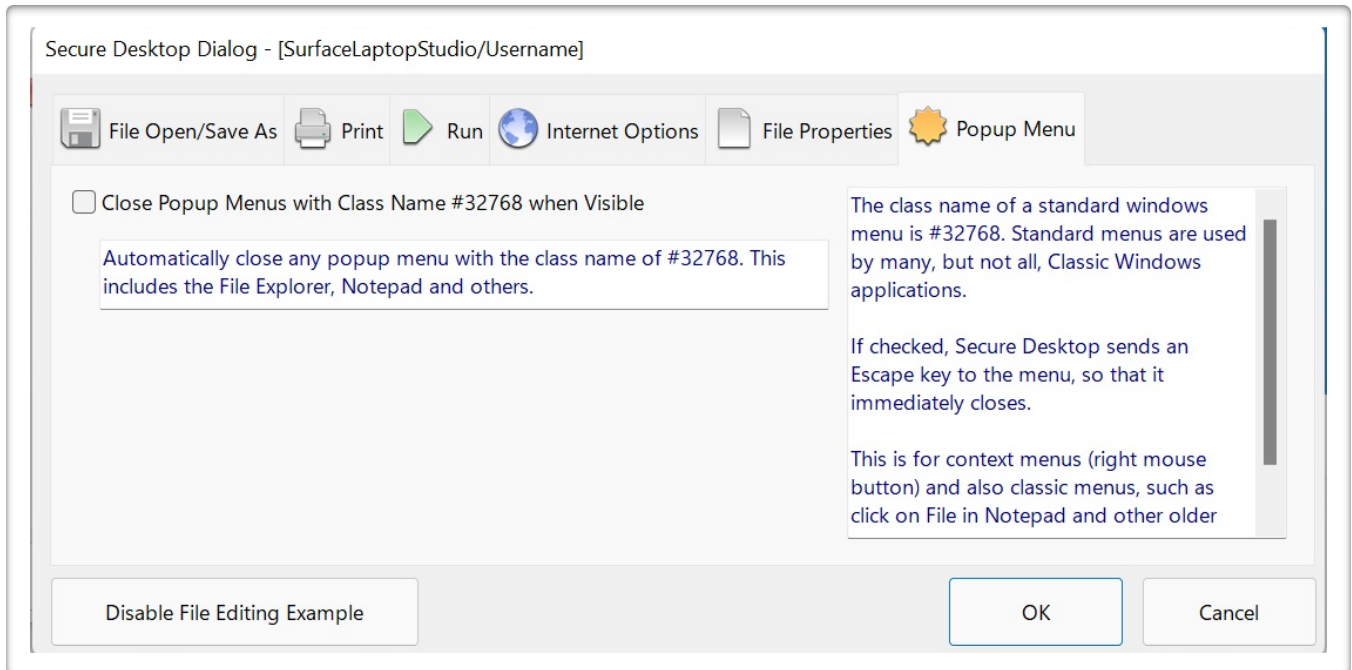
The standard File Properties dialog (Alt + Enter a file in File Explorer, for example) provides a way to view and edit a file's properties.

Close the file Properties dialog if Secure Desktop detects it as the topmost window.



Secure Desktop Tools | Secure Desktop tab | Dialog button |

Popup Menu tab



The class name of a standard windows menu is #32768. Standard menus are used by many, but not all, Classic Windows applications.

If checked, Secure Desktop sends an Escape key to the menu, so that it immediately closes.

This is for context menus (right mouse button) and also classic menus, such as click on File in Notepad and other older applications.

Automatically close any popup menu with the class name of #32768. This includes the File Explorer, Notepad and others.



Secure Desktop Tools | Windows Shell tab | All Users section |

Supervisor button | Supervisor Mode tab

Supervisor Setup - [All Users]

☒ Supervisor Mode
 ☐ When Logged In
 ☐ Calculation Passwords
 ☒ Administrator

☐ Enable Supervisor Toolbar Button

Supervisor Password:

Icon Background Color: Yellow

☐ Automatically Log Off after minutes

☐ Set to First Tab On Log Off

The Supervisor feature provides an easy way to 'log in' with one password and have uninterrupted access to typically 'secure' items. If enabled, a new toolbar button appears in Secure Desktop that prompts for a password.

As a visual indicator that the Secure Desktop shell is unlocked, the background color of the icons will change to yellow or some other configured background color.

The Supervisor feature provides an easy way to 'log in' with one password and have uninterrupted access to typically 'secure' items. If enabled, a new toolbar button appears in Secure Desktop that prompts for a password.

As a visual indicator that the Secure Desktop shell is unlocked, the background color of the icons will change to yellow or some other configured background color.

Optionally, automatically log off after some time. Also optionally, set Secure Desktop shell to the first tab on log off.



Secure Desktop Tools | Windows Shell tab | All Users section |

Supervisor button | When Logged In tab

Supervisor Setup - [All Users]

Supervisor Mode **When Logged In** Calculation Passwords Administrator

| | |
|--|--|
| <input type="checkbox"/> Enable Keystrokes/Mouse Buttons | <input type="checkbox"/> Enable Tools |
| <input type="checkbox"/> Enable Tray Icon Mouse Clicks | <input type="checkbox"/> Unlock Exit |
| <input type="checkbox"/> Disable Window Wizard | <input type="checkbox"/> Disable Setting |
| <input type="checkbox"/> Unlock All Tabs | <input type="checkbox"/> Disable Dialog |
| <input type="checkbox"/> Unlock All Icons | |

When the supervisor has successfully logged in, they may have access to any of the items checked in the When Logged In tab. Note that toolbar buttons not enabled under regular operation can be turned on temporarily in this manner.

OK Cancel

When the supervisor has successfully logged in, he/she may have access to any of the items checked in the When Logged In tab. Note that toolbar buttons not enabled under regular operation can be turned on temporarily in this manner.



Secure Desktop Tools | Windows Shell tab | All Users section |

Supervisor button | Calculation Passwords tab

Supervisor Setup - [All Users]

☒ Supervisor Mode
 ☐ When Logged In
 ☒ Calculation Passwords
 ☐ Administrator

☐ Enable Calculation Passwords

5 Digit PIN Save PIN To ☒ XML File ☐ Registry

Formula

Append Calculation To These Passwords

☐ All Tabs
 ☐ Tools

☐ All Icons
 ☐ Exit

☐ Supervisor

You can use calculation passwords throughout Secure Desktop, where previously it was for the Supervisor Mode only.

There is a calculation based on a PIN. This number is up to 5 digits: the day, the month, and the year using the Formula.

You have the choice of storing the PIN in the sDesktop.xml file or the registry. The registry location is

OK Cancel

You can use calculation passwords throughout Secure Desktop, where previously it was for the Supervisor Mode only.

There is a calculation based on a PIN. This number is up to 5 digits: the day, the month, and the year using the Formula.

You have the choice of storing the PIN in the sDesktop.xml file or the registry. The registry location is

HKEY_LOCAL_MACHINE\SOFTWARE\Visual Automation\Secure Desktop\Version4.0\CalcNumber

For the items selected, the password becomes the text password associated with that item plus the appended calculated password.

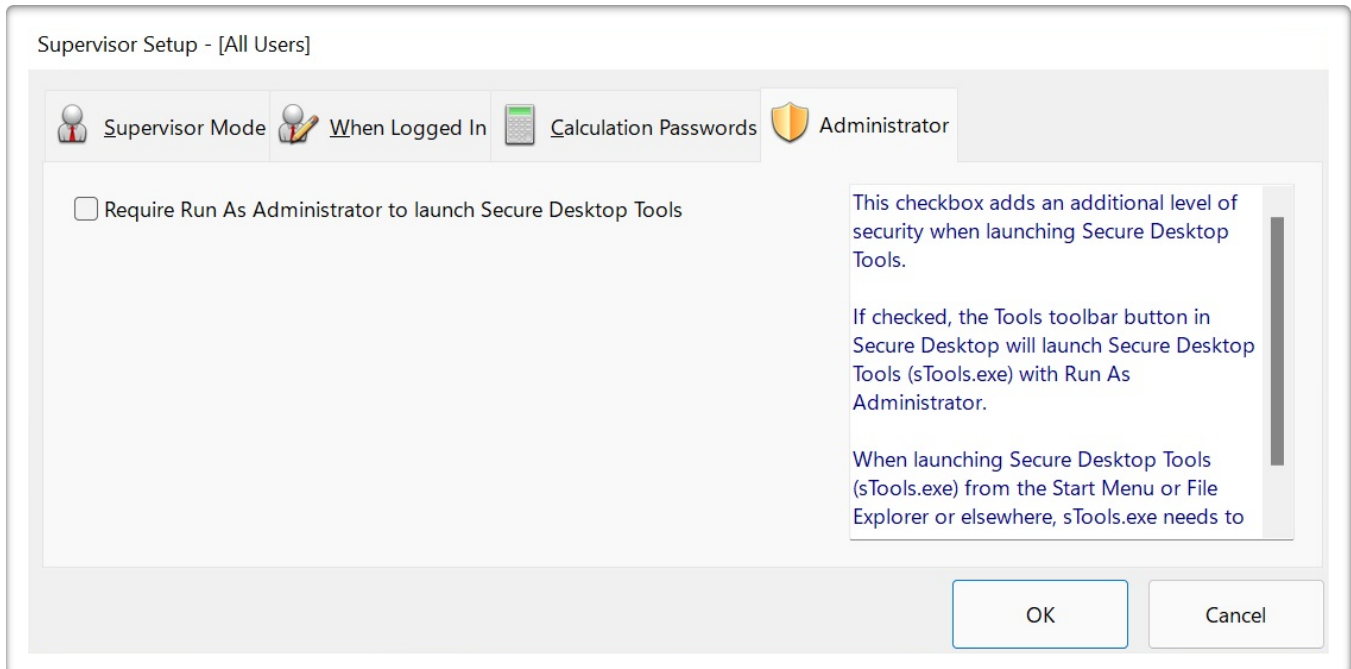
Example as follows:

- 1) Today is February 21, 2006.
- 2) My PIN is 12345.
- 3) The Calculated number for this day would be $(2*21)+2+21+2006+12345$, which equals 14416.
- 4) If you check Supervisor and the text password was 'super,' then when the user clicked on the Supervisor button, they would enter 'super14416'.
- 5) If the Supervisor is unchecked, they will input 'super.'
- 6) If checking All Tabs, then every tab that has a password associated with it would have the 14416 number appended to the text configured with that tab.



Secure Desktop Tools | Windows Shell tab | All Users section |

Supervisor button | Administrator tab



This checkbox adds an additional level of security when launching Secure Desktop Tools.

If checked, the Tools toolbar button in Secure Desktop will launch Secure Desktop Tools (sTools.exe) with Run As Administrator.

When launching Secure Desktop Tools (sTools.exe) from the Start Menu or File Explorer or elsewhere, sTools.exe needs to be launched with Run As Administrator.

Secure Desktop's Configuration sdesktop.xml File

All settings interfaced in the Secure Desktop system are saved in one XML file. This file is found in:

C:\ProgramData\VisualAutomation\SecureDesktop\sdesktop.xml

The XML file format is based on RSS 2.0. Audit files are also stored as XML/RSS 2.0 files, found in the same location, such as:

C:\ProgramData\VisualAutomation\SecureDesktop\sAudit RSS Monday 13 October 2008 UT.xml

Windows Registry

The registry contains the information necessary to change the shell application from Explorer.exe to sDesktop.exe. If you need to modify these settings manually, you will need to run RegEdit.exe. **USE CAUTION:** This is a database containing essential information about how your Windows system operates; modifying the wrong parameter could lead to unintended results.

Choose between the Explorer Shell and the Secure Desktop Shell. The shell is the application that automatically starts when Windows starts, as defined in the registry in Windows. These buttons are the main 'switch' to turn Secure Desktop on/off for maintenance purposes. This registry location is:

HKEY_LOCAL_MACHINE\Software\Microsoft\Windows NT\CurrentVersion\WinLogon\Shell

This is set to Explorer.exe for the Explorer shell. It is set to the full path to sDesktop.exe for the Secure Desktop shell.

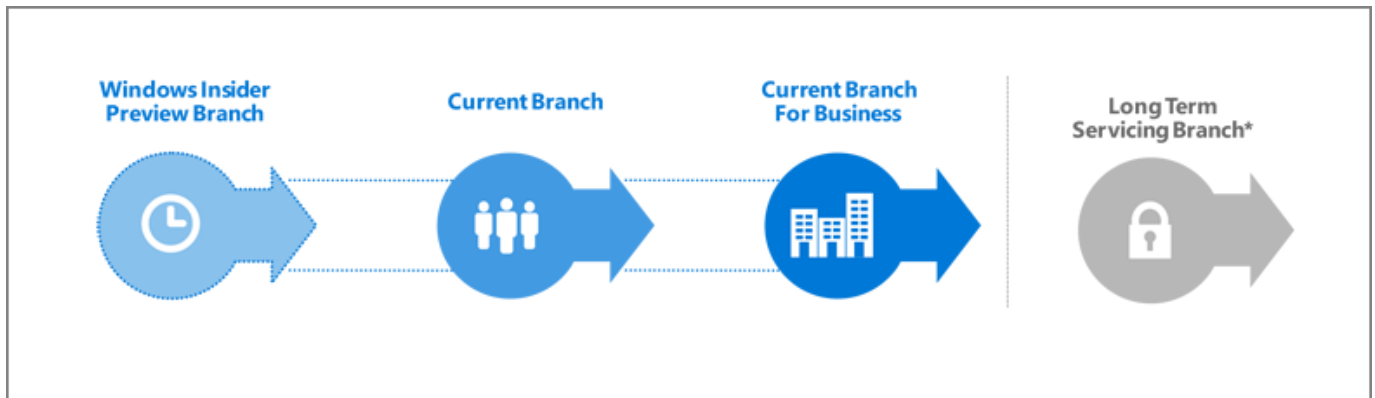
You can specify that the Secure Desktop shell is selected for the currently logged in user. You will need to have the user temporarily be an Administrator to set this registry value. Explorer would be the shell for all other users without this registry setting. This registry location is:

HKEY_CURRENT_USER\Software\Microsoft\Windows\CurrentVersion\Policies\System\Shell

If Shell does not exist, there is not a shell set for this user. If Shell does exist, and it's set to the full path to sDesktop.exe, then the Secure Desktop shell is set for this user.

Secure Desktop 11 automatically exports registry settings to TXT files in Windows 10/11.

Windows 10 & 11 Editions



Windows 10. Windows as a Service (WaaS)

Windows 10 is very different from previous versions of Windows. Windows 10 will make regular incremental improvements to the operating system. Some of these changes might not be desirable in a mission-critical system. Because of this, the Windows 10 Enterprise Long-Term Servicing Branch (LTSC) Edition is worth consideration.

Windows 10 Enterprise Long-Term Servicing Branch (LTSC) Edition

“Specialized systems—such as devices that control medical equipment, point-of-sale systems, and ATMs—often require a longer servicing option because of their purpose. These devices typically perform a single important task and don’t need feature updates as frequently as other devices in the organization. It’s more important that these devices be kept as stable and secure as possible than up to date with user interface changes. The LTSC servicing model prevents Windows 10 Enterprise LTSC devices from receiving the usual feature updates and provides only quality updates to ensure that device security stays up to date. With this in mind, quality updates are still immediately available to Windows 10 Enterprise LTSC clients, but customers can choose to defer them by using one of the servicing tools mentioned in the section Servicing tools.”

quoted from the following article:

<https://technet.microsoft.com/en-us/itpro/windows/plan/windows-10-servicing-options>

As the Microsoft TechNet article explains, Microsoft recommends the Windows 10 Enterprise LTSC Edition for a mission-critical system using Windows 10 in Retail, Manufacturing, and Pharmaceutical. We designed Secure Desktop for these same industries.

Win32 Windows application and the Universal Windows Program (UWP) app

We designed Secure Desktop for Win32 programs (e.g., COM, Win32, WPF, WinForms, etc.).

A Universal Windows Program (UWP) app is a new kind of app designed for Windows 10 and Windows 11. A Progressive Web App (PWA) is a web site that can appear to the user like a traditional application.

The Windows Explorer shell and the Secure Desktop shell both provide the ability to run Win32 programs.

In Windows 10 and Windows 11, UWP and PWA apps need the Windows Explorer shell. The Windows Explorer shell has to be running to launch and run a UWP or PWA app. This design is an unfortunate architectural choice.

Secure Desktop provides security by replacing the Windows Explorer shell. When setting the Secure Desktop program to be the Windows shell, the Explorer shell is not running. Because the Explorer shell is not running, Secure Desktop can not run UWP or PWA apps in any Edition of Windows 10 or Windows 11.

Browsers

Secure Desktop has always been able to launch Win32 browsers such as Internet Explorer, Chrome, Firefox, and Opera. Other Win32 browsers will run “as is” or could be controlled slightly using the Windows Wizard.

Secure Desktop can not launch UWP browsers such as the original Microsoft Edge browser. The new Microsoft Edge browser is a Win32 app and therefore is compatible with Secure Desktop. We do not recommend using Internet Explorer. Internet Explorer 11 will be retired and go out of support on June 15th, 2022.

If you are currently using Internet Explorer, please read the following Microsoft document about Internet Explorer and the Microsoft Edge Browser:

<https://docs.microsoft.com/en-us/deployedge/edge-learnmore-needededge>

If you are using the new Microsoft Edge browser, please read the following Microsoft document about the new Microsoft Edge browser policies:

<https://docs.microsoft.com/en-us/deployedge/microsoft-edge-policies>

Our Windows 10 Recommendation

Although Secure Desktop 10 is compatible with many editions of Windows 10 and Windows 11, we strongly recommend consideration of the Windows 10 Enterprise LTSC Edition before making a final decision. Regardless of what Edition of Windows 10 or Windows 11 you choose, Secure Desktop can not run UWP or PWA apps. Based on our research, we believe that Windows 10 Enterprise LTSC Edition may be the most secure and stable in a mission-critical system.

<https://www.microsoft.com/en-us/evalcenter/evaluate-windows-10-enterprise>

Other Windows 10 and Windows 11 Versions

Secure Desktop is not compatible with Windows 10S, Windows 10 in S Mode, Windows 11S or Windows 11 in S Mode. Secure Desktop 11 will work on Windows 10 on ARM in emulation mode, but Secure Desktop 10 will not. Secure Desktop 11 has not been specifically tested on Windows 11 on ARM at the time of this writing, but we believe it is fully compatible in emulation mode.

Announcing the availability of Windows 10 Pro and Enterprise on Surface Hub 2

The Microsoft Surface Hub 2S has always shipped with Windows 10 Team, which runs Microsoft Store apps only. Now, Windows 10 Pro and Enterprise may be installed on the Surface Hub 2. Please read more from Microsoft here: techcommunity.microsoft.com

Secure Desktop 10, Secure Desktop 11, Secure Utilities 11 and ColdKey 10 should all work in the environment of Windows 10 Pro and Enterprise on Surface Hub 2. Secure Desktop 11 and Secure Utilities 11 should work in the environment of Windows 11 Pro and Enterprise on Surface Hub 2. We have not tested in these environments, but we believe that Secure Desktop is fully compatible.

Windows 11

Secure Desktop 10 is not specifically designed or tested in Windows Server 2022 or Windows 11.

Secure Desktop 11 is specifically designed and tested for Windows Server 2022 and Windows 11.

Explorer Tips

There may be a case where you will want to use Explorer type windows to display icons. You can view a "directory" or "folder" by specifying a command-line of EXPLORER.EXE, followed by the full directory path. Using this command-line will allow the icons to be displayed in an explorer window, providing full access just like normal explorer mode, meaning the user could delete icons and programs, modify them, etc. The following is a full definition of the explorer command-line interface:

You can use the command-line switches for Windows Explorer in shortcut links or batch files, for example, to run Windows Explorer with a specified file selected.

Syntax

```
explorer [/n] [/e][,/root,object][[/select],subobject]
```

Parameters

/n - Always open a new window (even if the specified folder is already open).

/e - Use Windows Explorer view. The default is Open view.

/root,object

Specify the object in the normal namespace that will be used as the root of this Windows Explorer Folder. The default is to just use the normal namespace root (the desktop).

subobject - Specify the folder to receive the initial focus unless /select is used. The default is the root.

/select - Specifies that the parent folder is opened and the specified object is selected.

Windows Explorer Examples

To open a window rooted at \\myserver so you can easily browse the whole server, but nothing else:

```
explorer /e,/root,\\myserver
```

To open a folder window on C:\WINDOWS (or make an open window active) and select CALC.EXE, use:

```
explorer /select,c:\windows\calc.exe
```

sExplore.exe

Our sExplore.exe application of Secure Utilities 11 is an alternative to using Explorer for file launching or document printing. Secure Utilities 11 is included with Secure Desktop 11. Please see that section of the Secure Utilities manual for more details.

Commenting on Visual Automation Products and Services

As we grow, we plan to expand our service based on feedback from you. If you have suggestions, comments, or feedback about a Visual Automation product or service, please write to:

Visual Automation, Inc.

PO Box 502

Grand Ledge, Michigan 48837 USA

sales@visualautomation.com e-mail sales

support@visualautomation.com e-mail support

<http://visualautomation.com> web page

Technical Support Options

Technical support is available via e-mail at support@visualautomation.com.

We can help you more quickly if you are at your computer, Secure Desktop is running, your Secure Desktop documentation is close by, and you have the following information on hand:

Product serial number. To find the serial number, click on the info button or consult your e-mail message.

Product version number. To find the version number, click on the info button.

Computer make and model.

Microsoft Windows version.

Other applicable hardware and software.

Exact wording of any error messages and screenshots.