
Factory Automation

Secure Desktop is designed for control engineers using a Windows computer on the factory floor. Human machine interface (HMI), data collection, report generation, and soft control applications are mission-critical and therefore need the security features found in Secure Desktop.

21 CFR Part 11 (FDA)

Secure Desktop has several features to aid the pharmaceutical, biotechnology, food, and beverage industries. Using Secure Desktop, program and data access can be controlled, user activity can be logged to disk, and users can be automatically logged off from Windows due to inactivity.

Retail Point Of Sale (POS)

Secure Desktop is designed for IT professionals using Windows in the restaurant, retail, lodging, and resort industries. Point of sale (POS), inventory, customer-activated terminals, drive-thru, and kitchen order fulfillment are mission-critical and therefore need the security features found in Secure Desktop.

Kiosks

Secure Desktop is designed for IT professionals installing a Windows computer in a library, museum, cafe, airport, or college.

Windows

Secure Desktop 10

Point of Sale, Cafe, Factory Automation, Lab, Kiosk, Hotel, Restaurant, or Library -- whatever your public environment, Secure Desktop will lock down Windows. Replace the start menu, task-bar, and desktop icons with the Secure Desktop shell to completely control what a user can or can not do.

Visual Automation, Inc.

PO Box 502, Grand Ledge, Michigan 48837
(517)622-1850 www.visualautomation.com

Pricing

Single Unit, SDW-07-001, \$245 US

Five-Pack, SDW-07-005, \$900 US

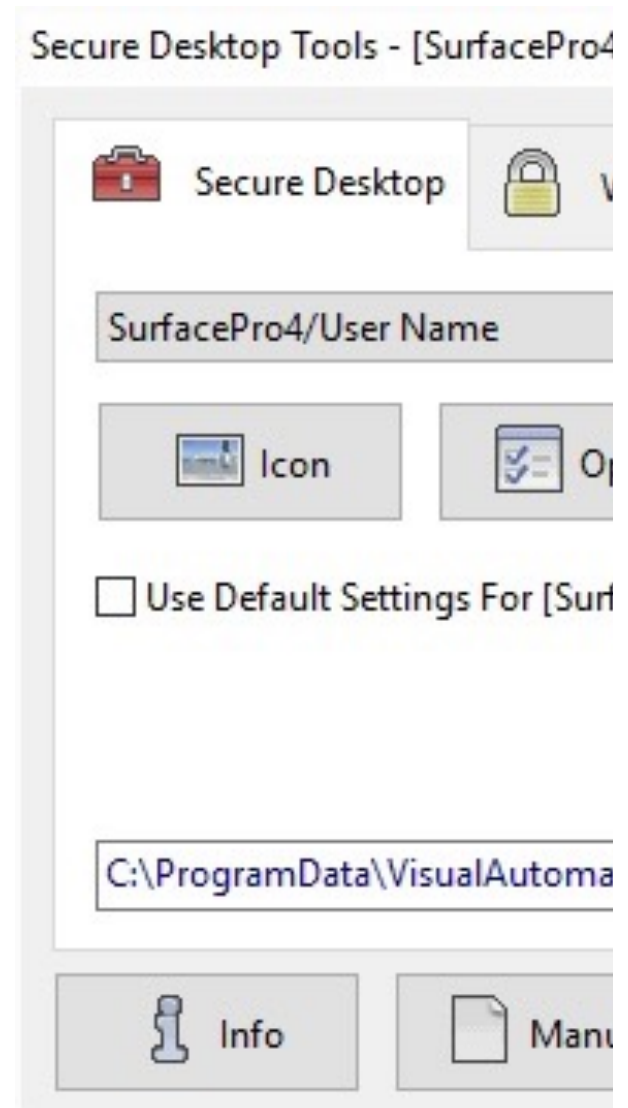
Ten-Pack, SDW-07-010, \$1,600 US



Secure Desktop 10

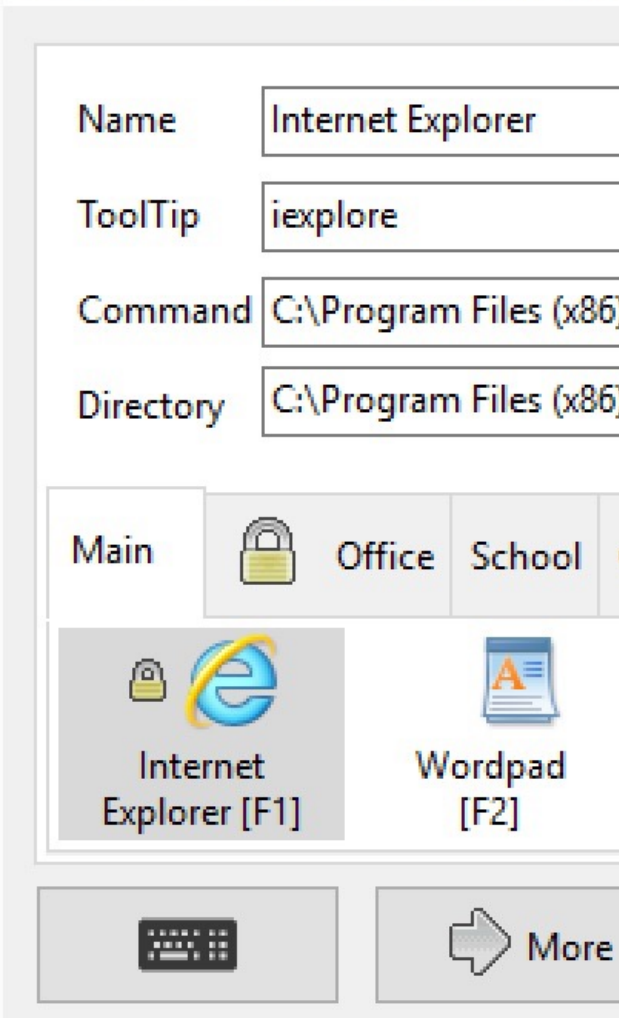
Windows XP, 7, 8 or 10

Internet Explorer 11



Icon Import.
 Windows Wizard.
 Icon & Tab Passwords.
 Keystroke Auditing.
 Disable Hot-Keys.

Secure Desktop Icon - [SurfacePro4/L



Window Wizard

The Window Wizard can manipulate a window or close a program during Secure Desktop 10 shutdown. Hide the window, force it to min or max state, close window.

Passwords

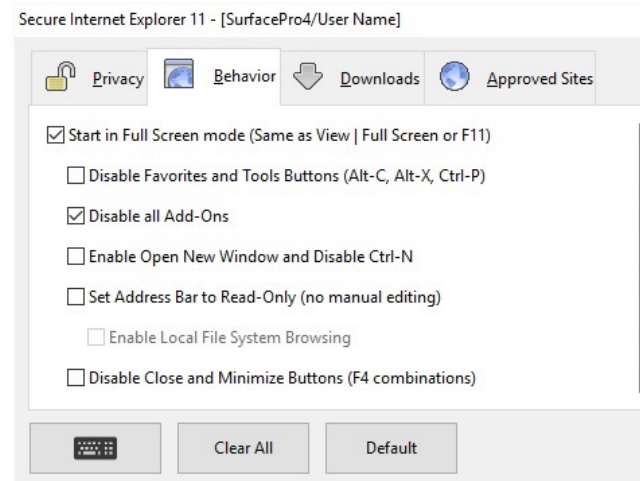
Each icon, tab, or toolbar button may be individually password protected.

Audit

Audit data is stored in XML files, in the RSS 2.0 format. Keystrokes, window titles, IE URLs, user name can be stored in the XML files.

Disable Hot-Keys

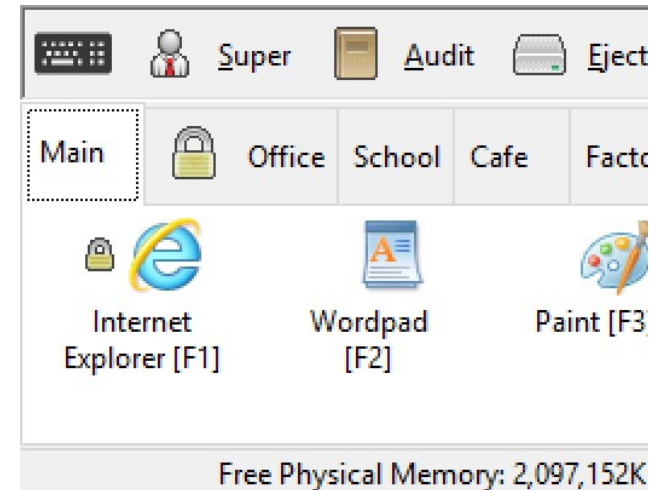
Secure Desktop has over 350 hot-key combinations to disable in Windows XP, 7, 8 and 10. These are system-wide for any program.



Internet Explorer 11

With Secure Desktop 10 and Internet Explorer 11, it's never been easier to create a desktop that is essentially "just the browser", a very secure desktop and browser.

Private data is automatically deleted on browser exit. After a period of inactivity, the browser is restarted and set back to the home page, deleting browser history, URL history, saved form data, passwords, download history, cookies, and the cache. Perfect for a browser kiosk environment.



Secure Desktop Shell

In 1994, Visual Automation built a simple shell program to replace Program Manager in Windows 3.1. Since then, Secure Desktop has secured every commercial version of Microsoft Windows. Secure Desktop 10 is designed for Windows XP. Windows 7. Windows 8. Windows 10.

And Windows 10 Enterprise LTSC.

Secure Desktop 10 is a toolbar window that spans the width of the user's screen, being placed at the top or the bottom.