

# SECURE DESKTOP 11

Visual Automation | Endpoint Security | Windows 10 | Windows 11

## XML

### Configuration and User Auditing

All configuration data is stored in one XML file, perfect for multiple computer installs. Audit files are in XML format too. RSS compatible. New backup feature.

## Documentation

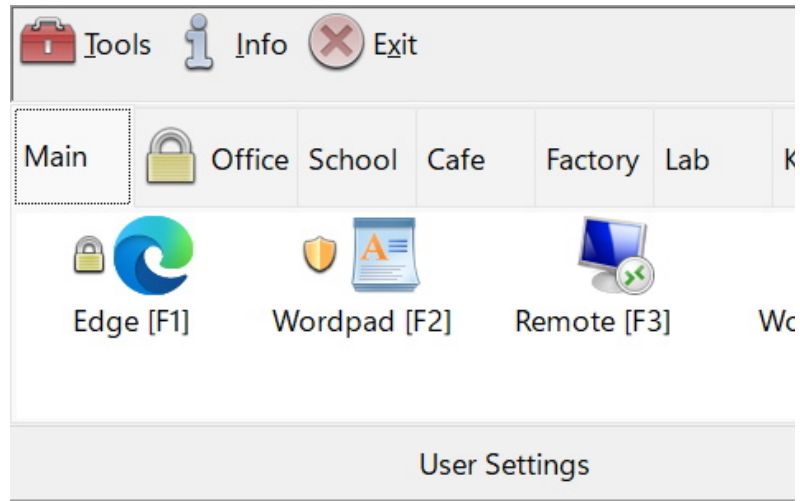
### Help. Adobe PDF.

Secure Desktop 11 has in-dialog help and tooltips throughout the impressive user interface. The Adobe PDF manual has been re-written.

## Keyboard

### Over 400 Hot-Keys Disabled

Secure Desktop 11 has over 400 keyboard shortcuts to disable in Windows 10 and Windows 11. These are system-wide for any program. Take Control.



## Best Version Yet!

Secure Desktop 11. Point of Sale, Cafe, Factory Automation, Lab, Kiosk, Hotel, Restaurant, or Library -- whatever your public environment, Secure Desktop will lock down Windows. Replace the start menu, task-bar, and desktop icons with the Secure Desktop shell to completely control what a user can or can not do.

Icon Wizard. Window Wizard. Icon Passwords. User Auditing. Tab Passwords. Disable Menus. Secure Desktop 11 provides the security tools you need. Over 350 keyboard shortcuts can be disabled for any program. Secure Desktop is designed for a computer running in a public area.

Secure Desktop is the perfect endpoint security solution for a public internet kiosk. Get Secure Desktop 11 today.



## UAC Ready

Secure Desktop 11 works with the User Access Control (UAC) in Windows. Run programs as Administrator. Single instance only. Re-start if closed.

## Utilities

View Audit files. View Wallpaper graphics. Utility applications found in Secure Desktop 10 and earlier are now part of Secure Utilities 11, included with Secure Desktop 11.

## Secure Utilities 11

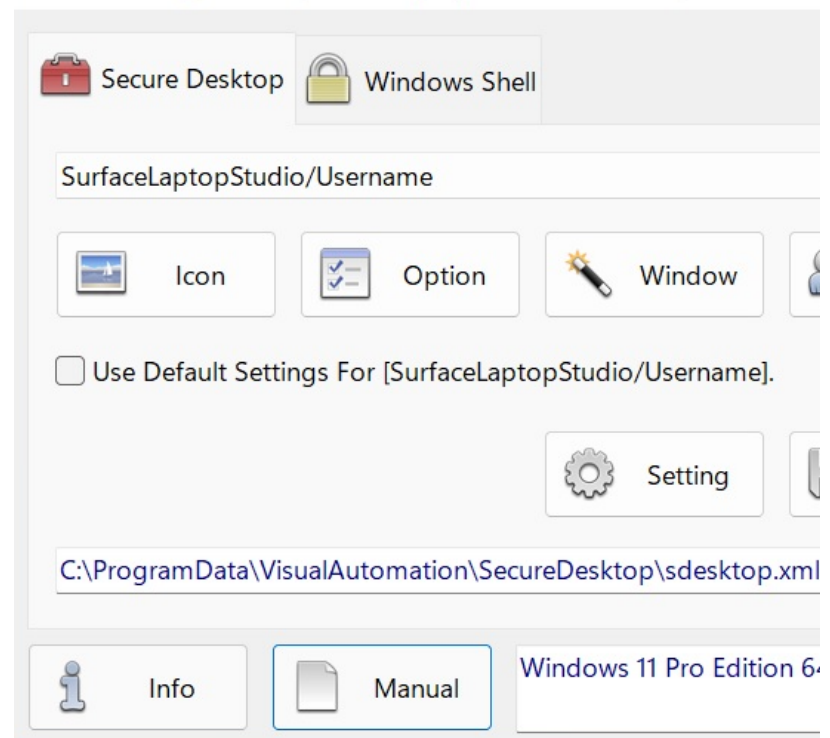
sExplore File Explorer. sCopy File. sNote Viewer. sImage Viewer. sKey On Screen Keyboard. sRun Program. sControl Panel. sEject Device. Logon, Driving Hiding, Disable Touch/Pen, and Auto Logoff registry settings.

## Endpoint Security for Windows Since 1994

In 1994, Visual Automation created a simple shell program to replace Program Manager in Windows 3.1. Since then, Secure Desktop has secured nearly every commercial version of Microsoft Windows. For Windows 10 and Windows 11, we started with the features that customers need.

New features are everywhere. While working on the user interface, nearly every element of Secure Desktop was studied and improved for touchscreen ease of use. Over 400 keyboard shortcuts disabled. Application launching. Window Wizard. Secure Desktop 11 is easy to use and a more powerful endpoint security solution at the same time.

### Secure Desktop Tools - [SurfaceLaptopStudio/Username]



## Technical Specifications

Secure Desktop 11 is a 32-bit application and is 64-bit aware. Secure Desktop 11 has been tested in Windows 10, Windows 11, Windows Server 2016, Windows Server 2019, and Windows Server 2022. Legacy versions of Windows are available by purchasing Secure Desktop 10.

## Configuration File

Secure Desktop 11 uses one XML file for configuration data, the same XML file as Secure Desktop 7, 8, and 10. Secure Desktop 11 does not overwrite previous versions of Secure Desktop.

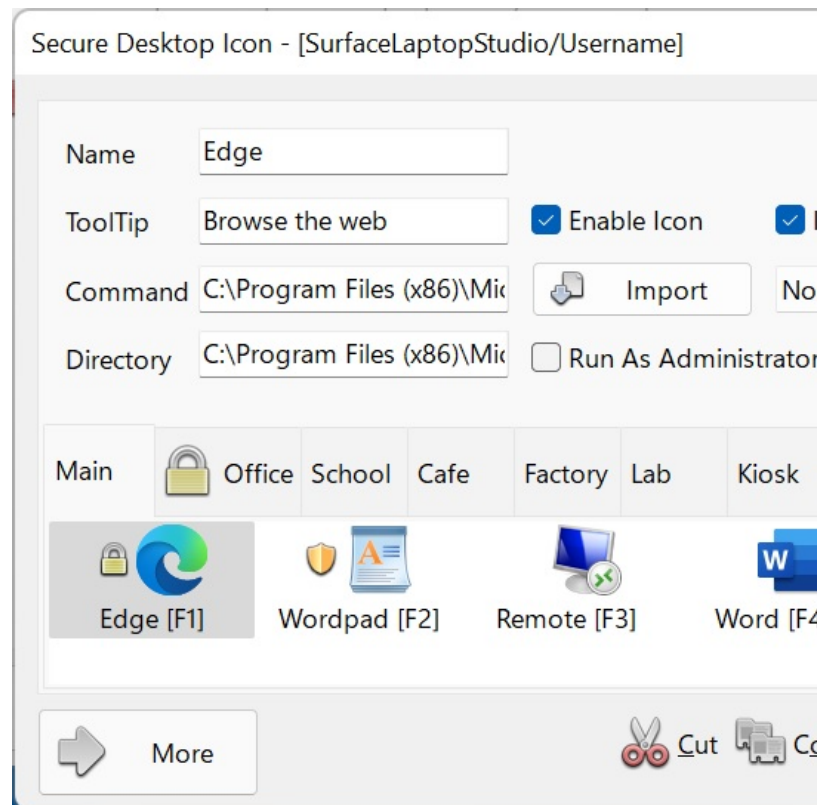
The XML configuration file is automatically backed up. There is also a manual backup and restore. When using Secure Desktop 11, registry data written by Secure Desktop is automatically backed up for documentation purposes.

## Windows Win32 Application Launching

Secure Desktop 11 provides several import mechanisms to bring in program data from Start Menu Shortcuts, Startup Group Shortcuts, Registry Startup, Desktop Shortcuts, Program Files, and My Computer.

Icon importing is accomplished very quickly using the Import button in the Icon Configuration. Set any additional details for an imported icon and manually browse for a program to launch.

A program can be re-started if it's been closed by the user. An application can be set to run a Single Instance Only of that application. Applications can be set to Run As Administrator, should they need Administrator access.



## Startup Tab

Secure Desktop 11 does not automatically start everything that the Explorer Shell starts. Services are always started, regardless of what shell is running. Still, any other program needs to be configured into Secure Desktop's Startup Tab (not visible to end-user). There are several advantages to this when Secure Desktop 11 is running as the shell:

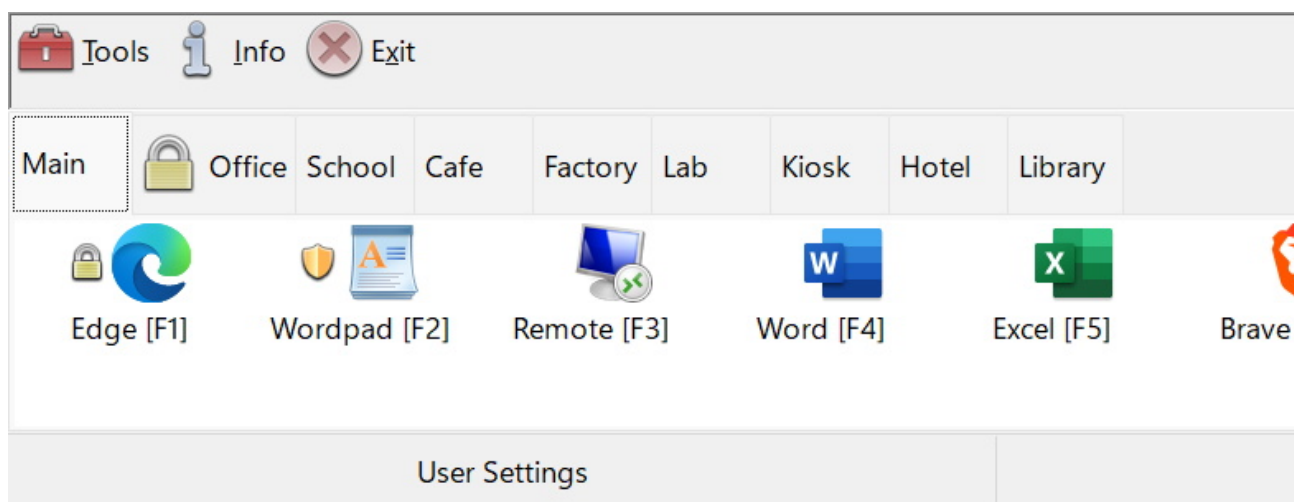
- Unknown programs will not automatically start from the registry
- Secure Desktop programs are started in a specific order
- A time delay can be specified for each program, to ensure that one has begun before the next is launched

## Passwords

Each icon, group tab, or toolbar button may be individually password protected. A keyboard shortcut can be assigned to bring Secure Desktop 11 to the top of the Z-order, which may also be password protected. Passwords can change dynamically, using the Supervisor feature, by appending a calculated number to any Secure Desktop 11 password. This calculation is based on the computer system date in addition to a 5 digit PIN number.

## Secure Desktop Shell

Secure Desktop 11 is a toolbar window that spans the user's screen width and is placed at the top or the bottom. The shell can also be set to be at the top or the bottom of the Z-order. Icon mouse clicks can be set to single or double. The icon background color can be changed. Function keys for the icons can be on or off. The tab bar can be removed if only one tab is used. The status bar can be hidden. Mouse clicks for the Tray Icons can be disabled. System icons (Volume, Network, Power) can be displayed, although it is less secure due to starting unknown programs.



## Audit

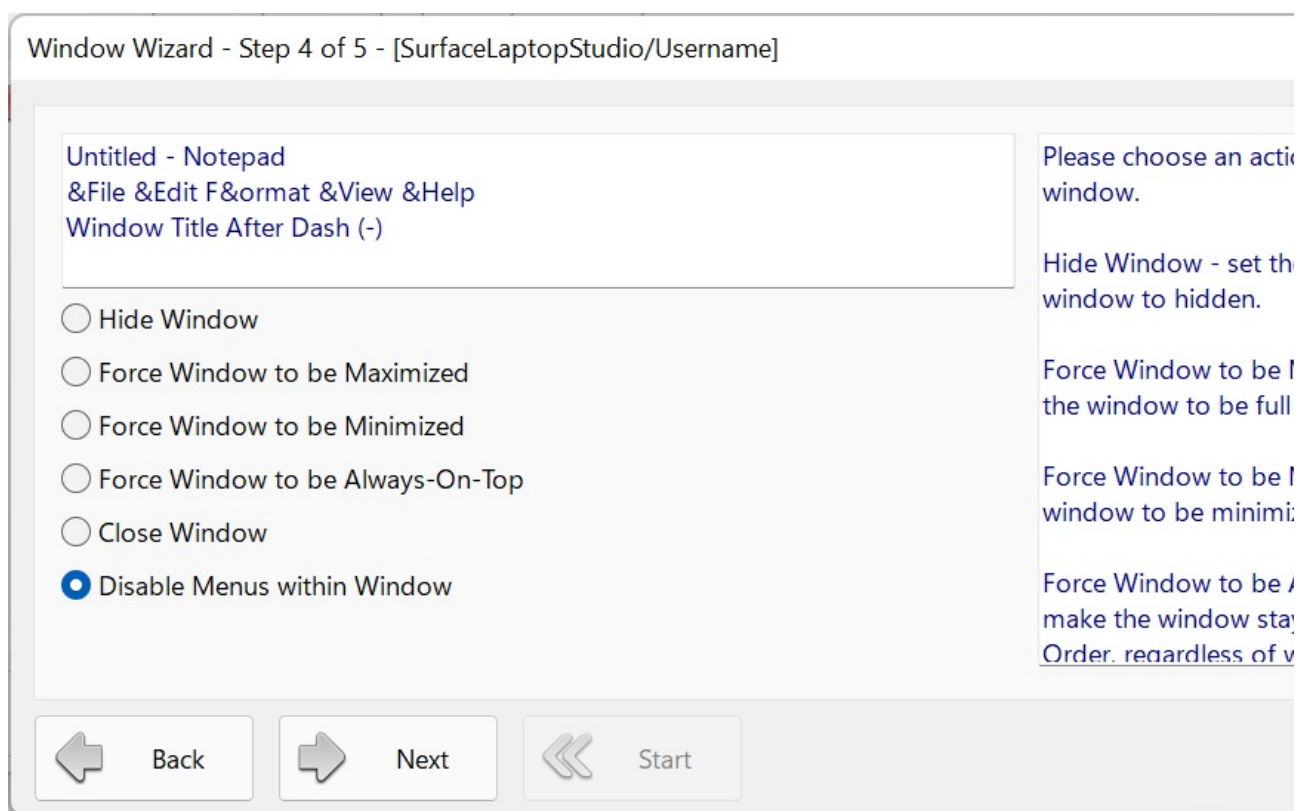
Audit data is stored in XML files in the RSS 2.0 format. Window titles and the current user name are stored in the XML files.

## A new package named Secure Utilities 11 included with Secure Desktop 11

sExplore File Explorer. sCopy File. sMenu Start Menu. sKey On Screen Keyboard. sNote Viewer. sImage Viewer. sRun Program. sControl Panel. sEject Device. Logon, Driving Hiding, Disable Touch/Pen, and Auto Logoff registry settings.

## Window Wizard

The Window Wizard can manipulate a window or close a program during the Secure Desktop 11 shutdown. Windows are picked by title and/or menu items. Then acted on to hide the window, force it to

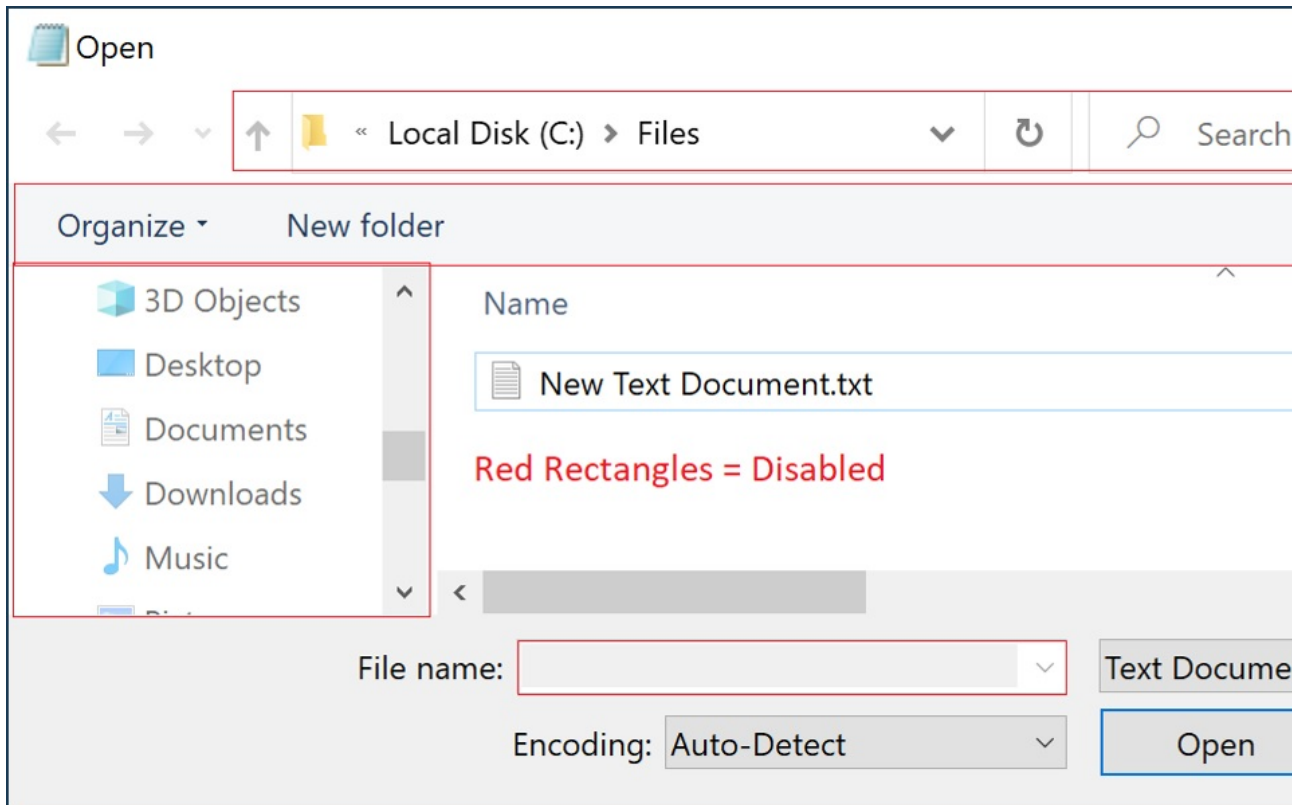


min or max state, close the window, or disable menu items for windows with the older style.

## File Access and File Open, Browse and Save As Dialogs

New features include the ability to disable part of the user interface of the standard File Open, Browse and Save As Dialogs.

The File Open, Browse and Save As Dialogs are like mini versions of File Explorer. Secure Desktop can disable relevant mouse clicks and keyboard shortcuts while the dialog is on top, preventing unwanted file editing or manipulation. A similar feature is provided for the Print Dialog.



## Windows Win32 Application Launching

Most of our customers use Secure Desktop in a mission-critical setting such as manufacturing, the pharmaceutical industry, or for retail point of sale. When using Windows 10 in a mission-critical environment, Microsoft recommends using Windows 10 Enterprise Long-Term Servicing Channel (LTSC) Edition. This LTSC Edition does not support Universal Windows applications. Although Secure Desktop works on any Windows 10 Edition (except Windows 10 S), we recommend that our customers carefully research the various Editions to ensure a stable system. Windows 10 Enterprise LTSC Edition may be the best Edition of Windows 10 for your mission-critical setting.

## Pricing

---

|                                  |            |            |
|----------------------------------|------------|------------|
| Secure Desktop 11 Single Unit    | SDW-10-001 | \$245 US   |
| Secure Desktop 11 Five-Pack      | SDW-10-005 | \$900 US   |
| Secure Desktop 11 Ten-Pack       | SDW-10-010 | \$1,600 US |
| Secure Desktop 11 Fifteen-Pack   | SDW-10-015 | \$2,400 US |
| Secure Desktop 11 Single Upgrade | SDU-11-001 | \$125 US   |