

# SECURE DESKTOP 13

Visual Automation | Endpoint Security | Windows 11 | 64 Bit

## Configuration

### Configuration In Registry

Configuration data is in the Registry (same location as Secure Desktop 12); Tools sets the configuration.

## User Auditing

### CSV & Windows Event Log

Audit files are now in CSV format. Optionally save audit data to the Windows Event Log. Save in both places for redundancy!

## Documentation

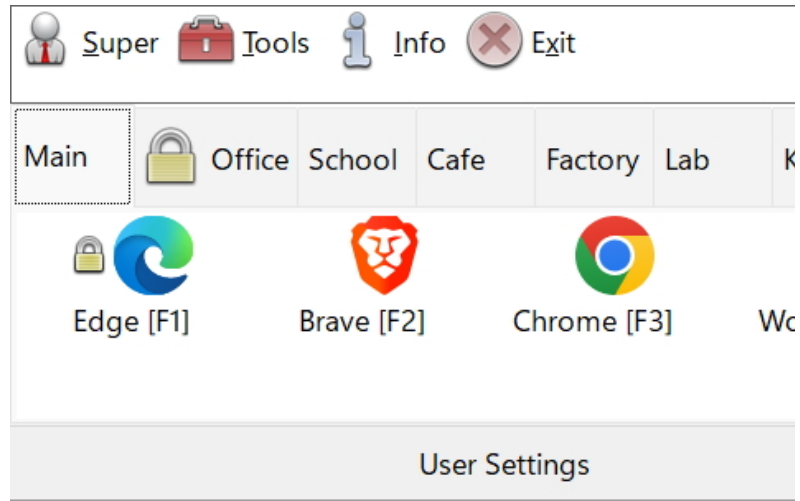
### Help. Adobe PDF.

Secure Desktop 13 has in-dialog help and tooltips throughout the impressive user interface. We have rewritten the PDF manual.

## Keyboard

### Over 400 Hot-Keys Disabled

Secure Desktop 13 has over 400 keyboard shortcuts to disable. These are system-wide for any program. Take Control.



## Best Version Yet!

Secure Desktop 13. Point of Sale, Cafe, Factory Automation, Lab, Kiosk, Hotel, Restaurant, or Library -- whatever your public environment, Secure Desktop will lock down Windows. Replace the start menu, taskbar, and desktop icons with the Secure Desktop shell to control what a user can or can not do.

Icon Wizard. Window Wizard. Icon Passwords. User Auditing. Tab Passwords. Disable Menus. Secure Desktop 13 provides the security tools you need—Disable over 400 keyboard shortcuts for any program. Secure Desktop is ideal for a computer running in a public area.

Secure Desktop is the perfect endpoint security solution for a public internet kiosk. Get Secure Desktop 13 today.



## UAC Ready

Secure Desktop 13 works with Windows's User Access Control (UAC). Run programs as Administrator. Single instance only. Re-start if closed.

## Utilities

View Audit CSV files. View Wallpaper graphics. Utility applications found in Secure Desktop 10 and earlier are now part of Secure Utilities 13.

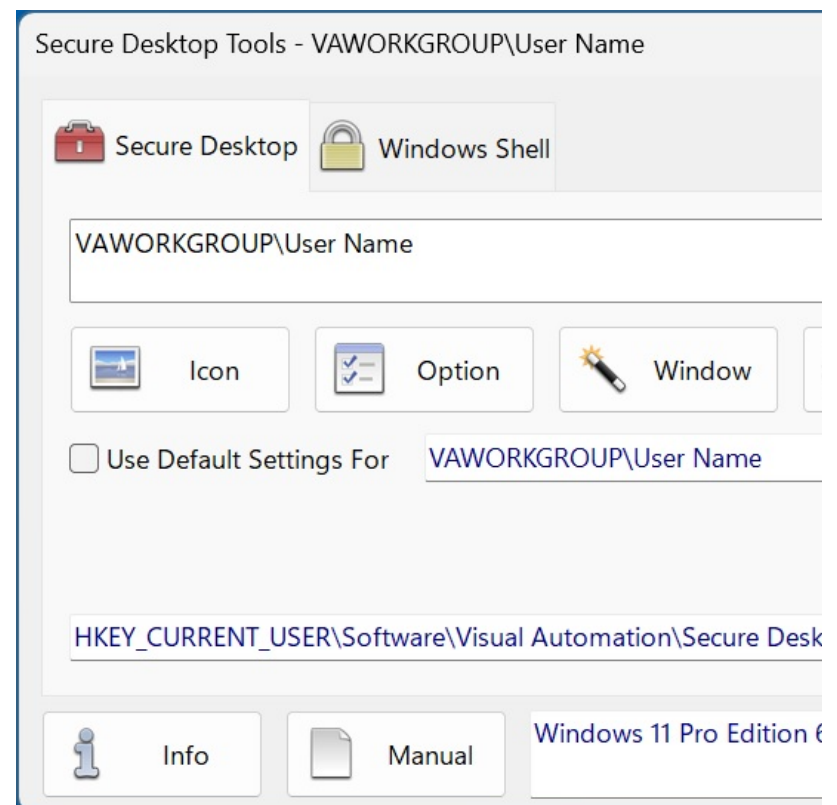
## Secure Utilities 13

sExplore File Explorer. sCopy File. sMenu Start Menu. sArchive File. sNote Viewer. sImage Viewer. sCSV Viewer. sZIP Viewer. sKey On-Screen Keyboard. sRun Program. sControl Panel. sEject Device. sRes Resolution. sLock Workstation. Logon, Drive Hiding, Touch/Pen Disable, and Auto Logoff registry settings. All Secure Utilities 13 are 64-bit (x64).

## Endpoint Security for Windows Since 1994

In 1994, Visual Automation created a simple shell program to replace Program Manager in Windows 3.1. Since then, Secure Desktop has secured nearly every commercial version of Microsoft Windows. For Windows 11, we started with the features that customers need.

New features are everywhere. While working on the user interface, nearly every element of Secure Desktop was studied and improved for touchscreen ease of use. You can disable over 400 keyboard shortcuts. Application launching. Window Wizard. Secure Desktop 13 is easy to use and a more powerful endpoint security solution at the same time.



## Technical Specifications

Secure Desktop 13 is a 64-bit application (previous versions were 32-bit/64-bit aware). We tested Secure Desktop 13 in Windows 11 and Windows Server 2025. Legacy versions of Windows are supported by purchasing Secure Desktop 10, 11 or 12.

## Configuration Data

We store Secure Desktop 13 configuration data in the registry (same location as Secure Desktop 12). We do not use the sdesktop.xml file like Secure Desktop 7, 8, 10, and 11. Secure Desktop 13 does not overwrite previous versions of Secure Desktop.

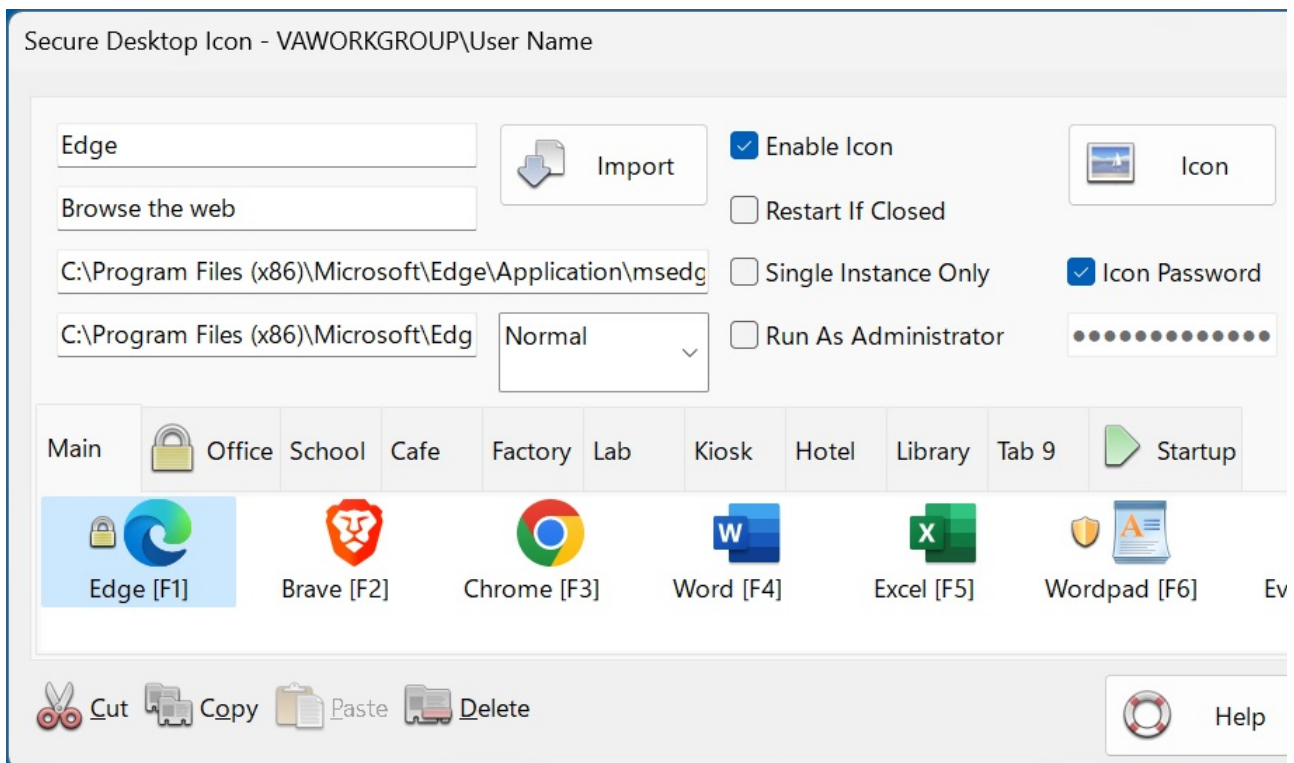
We automatically back up the configuration data. There is also a manual backup and restore.

## Windows Win32 Application Launching

Secure Desktop 13 provides several import mechanisms to bring in program data from Start Menu Shortcuts, Startup Group Shortcuts, Registry Startup, Desktop Shortcuts, Program Files, and My Computer.

Import an Icon (application) quickly using the **Import** button in the Icon Configuration. Set any additional details for an imported icon and manually browse for a program to launch.

You can restart an application if it's been closed by the user. Or run a Single Instance Only of that application. You can set an Icon to Run As Administrator, should they need Administrator access.



## Startup Tab

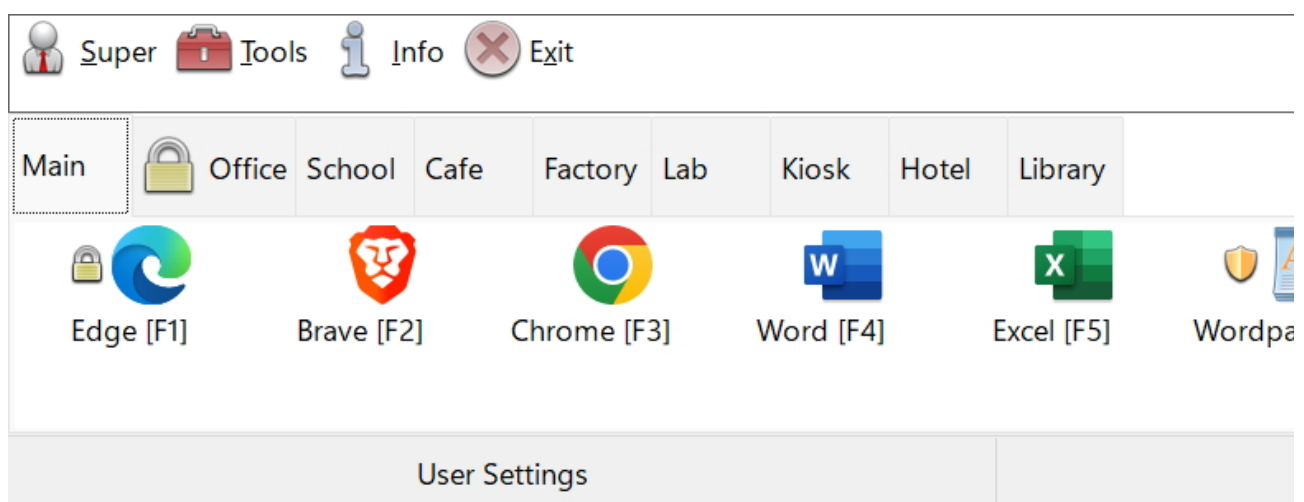
- Secure Desktop 13 does not automatically start everything that the Explorer Shell starts. The system always starts services, regardless of what shell is running. Still, you must configure any other program you wish to auto-start in Secure Desktop's Startup Tab (not visible to the user). There are several advantages to this when Secure Desktop 13 is running as the shell:
- Unknown applications will not automatically start from the registry, unless enabled via the Autostart tab.
- Start Secure Desktop applications in a specific order
- You can specify a time delay for each application to ensure that one has begun before the next

## Passwords

Each icon, group tab, or toolbar button may be individually password-protected. You can assign a keyboard shortcut to bring Secure Desktop 13 to the top of the Z-order, which may also be password-protected. Using the Supervisor feature, passwords can change dynamically by requiring a calculated passcode to any Secure Desktop 13 password. We base this calculation on the computer system date and a 5-digit PIN. Secure Desktop password data is stored as a hash.

## Secure Desktop Shell

The Secure Desktop 13 shell is a toolbar window that spans the user's screen width - place it at the top or the bottom. Set the shell to the top or the bottom of the Z-order. Set icon mouse clicks to single or double. Change the icon background color. Function keys for the icons can be on or off. Remove the tab bar if only one tab is visible. Hide the status bar. Disable mouse clicks for the Tray Icons. System icons (Volume, Network, Power) can be displayed, although they are less secure due to the start of unknown programs.



## Audit

---

Secure Desktop 13 stores the audit data in CSV files, the Window Event Log, or both. We store the window titles and the current user name in this data.

## Secure Utilities 13, included with Secure Desktop 13

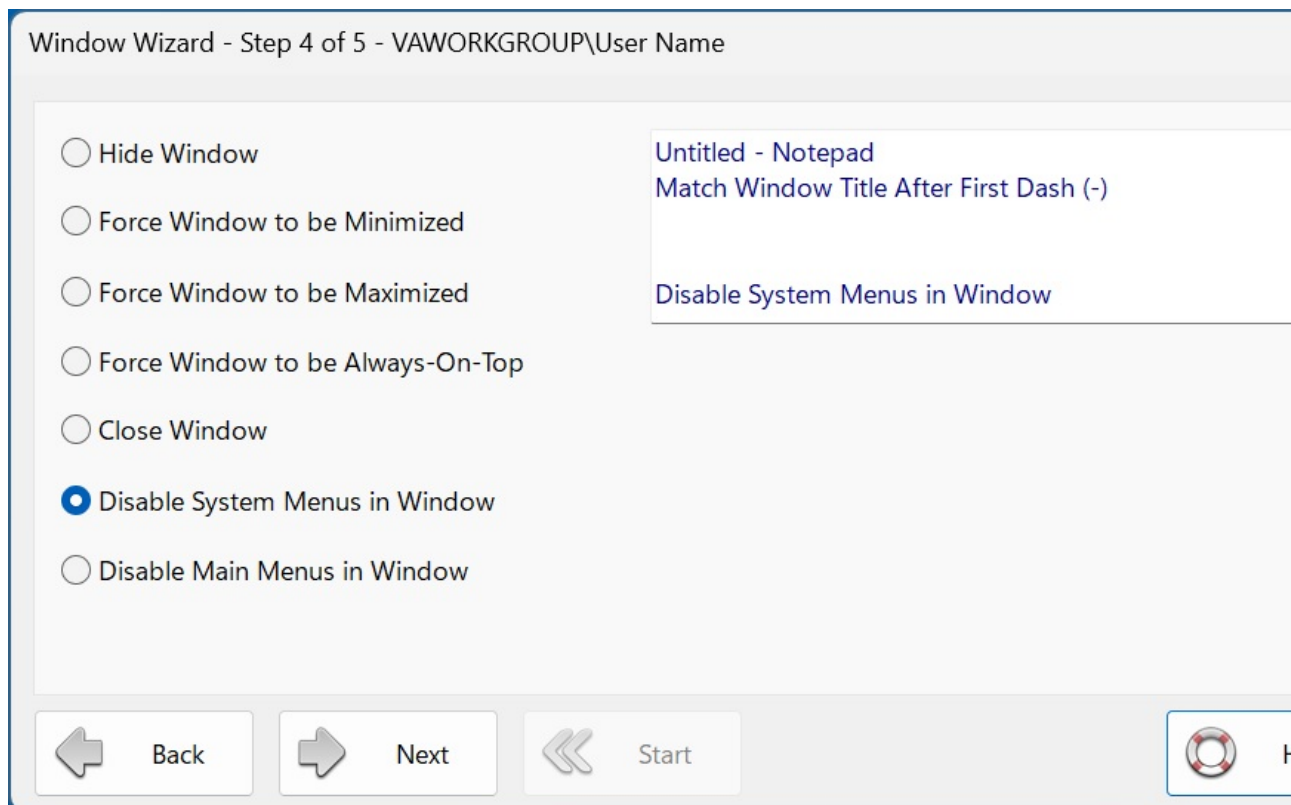
---

sExplore File Explorer. sCopy File. sMenu Start Menu. sArchive File. sNote Viewer. sImage Viewer. sCSV Viewer. sZIP Viewer. sKeyboard On-Screen Keyboard. sRun Program. sControl Panel. sEject Device. sRes Resolution. sLock Workstation. Logon, Drive Hiding, Touch/Pen Disabling, and Auto Logoff registry settings.

## Window Wizard

---

The Window Wizard can manipulate a window. Secure Desktop 13 identifies windows by title, class name, or min/max buttons. Then, we act on the window to hide it, force it to min or max state, close it, or disable menu items for windows with the older style. Send Alt + N (No button) and other keyboard shortcuts to a message window.

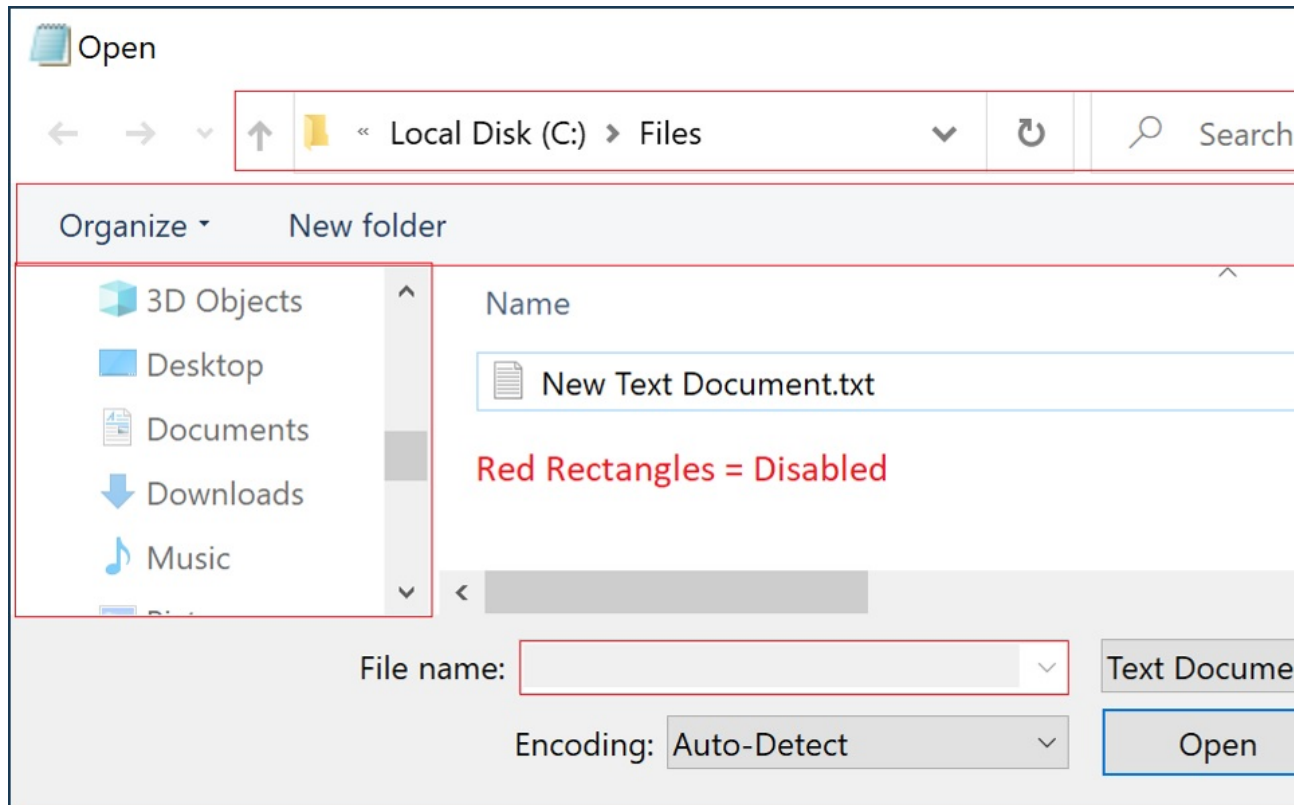


## File Access and File Open, Browse and Save As Dialogs

---

Disable part of the standard user interface for File Open, Browse, or Save As Dialogs.

The File Open, Browse, or Save As Dialogs are mini versions of File Explorer. Secure Desktop can disable relevant mouse clicks and keyboard shortcuts while the dialog is on top, preventing unwanted file editing or manipulation. We provide a similar feature for the Print Dialog.



## Windows Win32 Application Launching

---

Most Visual Automation customers use Secure Desktop in mission-critical settings such as manufacturing, the pharmaceutical industry, or retail point of sale. When using Windows 11 in a mission-critical environment, Microsoft recommends using Windows 11 Enterprise Long-Term Servicing Channel (LTSC) Edition. This LTSC Edition does not support Universal Windows applications. Although Secure Desktop 13 works on any Windows 11 Edition (except Windows 11S), we recommend that our customers carefully research the various Editions to ensure a stable system. Windows 11 Enterprise LTSC Edition may be the best Edition of Windows 11 for your mission-critical setting.

## Pricing

---

Secure Desktop 13 Single Unit	SDE-11-001	\$345 US
Secure Desktop 13 Five-Pack	SDE-11-005	\$1,500 US
Secure Desktop 13 Ten-Pack	SDE-11-010	\$2,600 US
Secure Desktop 13 Fifteen-Pack	SDE-11-015	\$3,900 US
Secure Desktop 13 Single Upgrade	SDU-13-001	\$175 US