

# SECURE UTILITIES 11

Visual Automation | Secure Utilities | Windows 10 | Windows 11

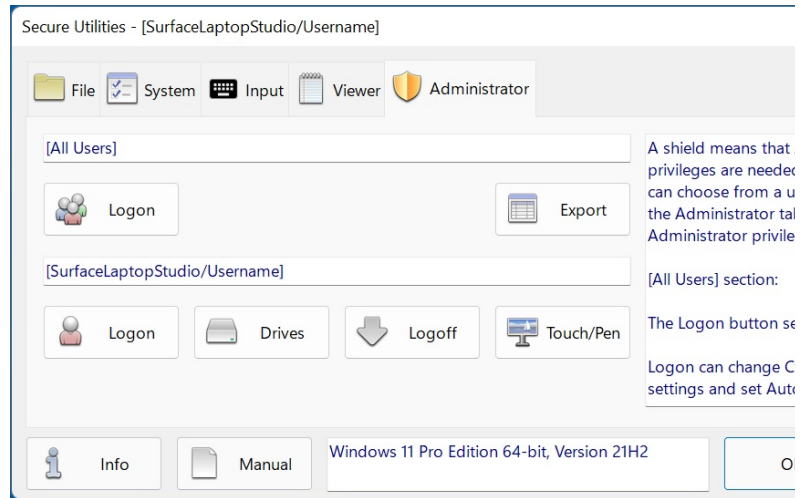
## sExplore File Explorer

This program is a replacement for File Explorer that is restricted to a particular folder and file wild card based on command-line parameters. The user can not navigate above the base folder in the file folder hierarchy. File and folder editing is not possible, but the user can launch a program or document file. The file name for sExplore File Explorer is sExplore.exe.

## sCopy File

This program provides a way to copy files restricted to a particular source folder, destination folder, and file wild card based on command-line parameters. The user can not navigate above the base folders in the file folder hierarchy. File and folder editing is not possible. The file name for sCopy File is sCopy.exe.

## sMenu Start Menu



## Useful Utilities

Secure Utilities is a collection of small command-line apps and a user interface for helpful registry settings. Secure Utilities 11 is included with Secure Desktop 11.

### File Utilities

sExplore File Explorer displays files for launch. For a simple way to copy files between 2 fixed folder locations, there is sCopy File. To provide access to all start menu and desktop icon file shortcuts, try sMenu Start Menu.

The user can not roam around the file system with these utilities. Or delete files. Or rename files.

### System Utilities

sRun Program displays the system Run Dialog. Use sControl Panel to launch the Windows Control Panel. sEject Device displays the Eject Device Dialog.



## sNote Viewer

This program provides a way to view text files restricted to a particular folder and file wildcard based on command-line parameters. The user can not navigate above the base folder in the file folder hierarchy. File and folder editing is not possible. The file name for sNote Viewer is sNote.exe.

## sImage Viewer

## sRun Program

sRun Program launches the same Run dialog started from the Start menu. The file name for sRun Program is sRun.exe.

## sControl Panel

This program launches the Control Panel dialog started from the Start menu. The file name for the sControl Panel is sControl.exe.

## sEject Device

This program launches the Eject Device dialog. The file name for the sEject Device is sEject.exe.

## sLogoff Screen Saver

Secure Utilities includes a screen saver program that is not a screen saver. sLogOff automatically logs off the user after the designated period of inactivity is met. This file is named sLogOff.SCR, located in the Windows System folder.

## Automatic Logon

Automatic Logon Enabled determines whether the automatic logon feature is on. Automatic logon uses the domain, user name, and password stored in the registry to log you on to the computer when the system starts. The Log On to Windows dialog box is not displayed.

## Hide Drives

By checking on a drive letter, Secure Utilities sets a registry value that removes the drives from "file open" and "file save as" dialogs. These settings are on a user by user basis.

## sKey On Screen Keyboard

Simple on screen keyboard, no other functionality.

