

# SECURE UTILITIES 12

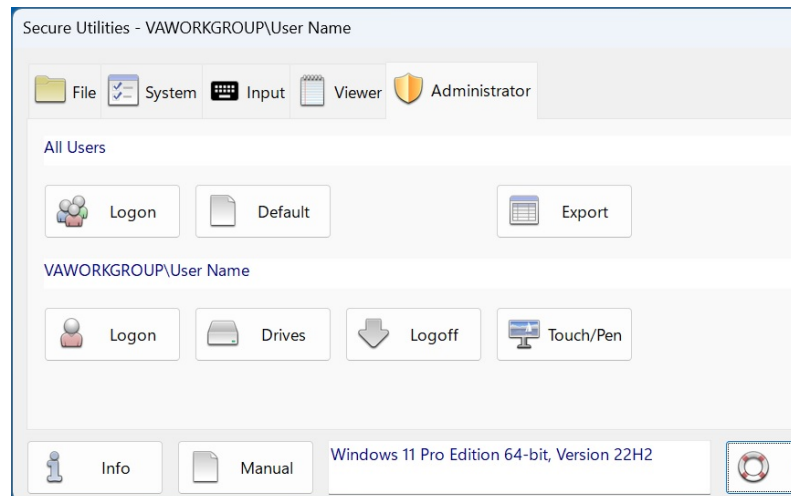
Visual Automation | Secure Utilities | Windows 10 | Windows 11

## sExplore File Explorer

You can use this program instead of File Explorer, which is restricted to a particular folder and file wild card based on command-line parameters. The user can not navigate above the base folder in the file folder hierarchy. File and folder editing is impossible, but users can launch a program or document file. The file name for sExplore File Explorer is sExplore.exe.

## sCopy File

This program provides a way to copy files restricted to a particular source and destination folder and file wildcard based on command-line parameters. The user can not navigate above the base folders in the file folder hierarchy. File and folder editing is not possible. The file name for sCopy File is sCopy.exe.



## Useful Utilities

Secure Utilities is a collection of small command-line apps and a user interface for helpful registry settings.

### *File Utilities*

sExplore File Explorer displays files for launch. For a simple way to copy files between 2 fixed folder locations, there is sCopy File. To provide access to all start menu and desktop icon file shortcuts, try sMenu Start Menu.

The user can not roam around the file system with these utilities. Or delete files. Or rename files.

### *System Utilities*

sRun Program displays the system Run Dialog. Use the sControl Panel to launch the Windows Control Panel. sEject Device displays the Eject Device Dialog.



## sMenu Start Menu

sMenu Start Menu is an included utility to provide access to file shortcuts that correspond to the file shortcuts found in the Start Menu and the Desktop.

## sRun Program

sRun Program launches the same Run dialog started from the Start menu. The file name for sRun Program is sRun.exe.

## sControl Panel

This program launches the Control Panel dialog started from the Start menu. The file name for the sControl Panel is sControl.exe.

## sEject Device

This program launches the Eject Device dialog. The file name for the sEject Device is sEject.exe.

## sKey On-Screen Keyboard

sKey On-Screen Keyboard is a simple on screen keyboard for use when there is only a touch screen and not a physical keyboard.

## Input Utilities

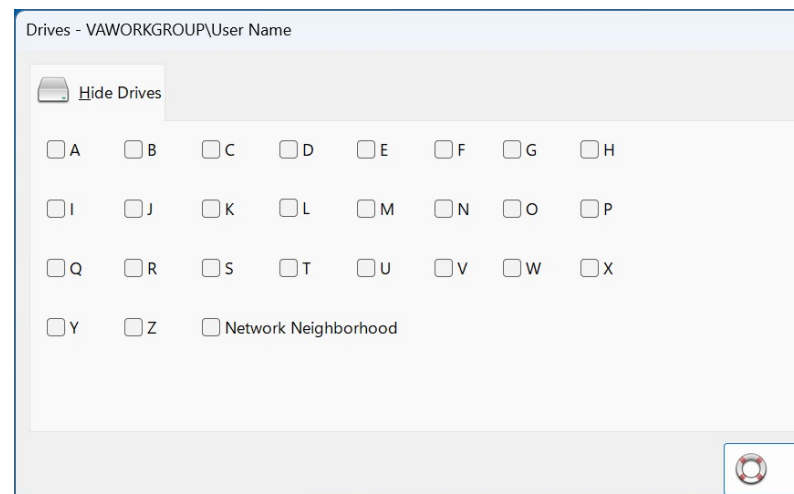
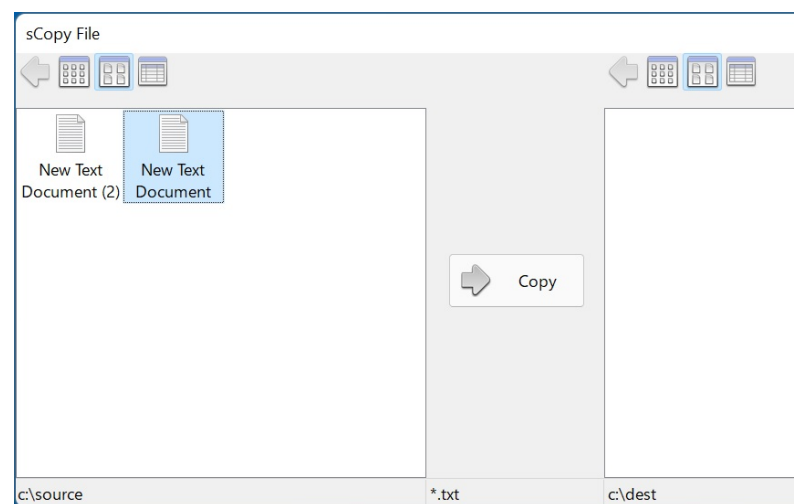
sKey On-Screen Keyboard is a simple on-screen keyboard for use when there is only a touch screen and not a physical keyboard.

## Viewer Utilities

sNote Viewer is a text file viewer. sImage Viewer views image files.

## Registry Settings

Set Auto Logon. Set Ctrl + Alt + Delete screen settings. Hide Drives. Set Auto Logoff Screen Saver settings. Disable Press and Hold for Right Clicking.



## sNote Viewer

---

This program provides a way to view text files restricted to a particular folder and file wildcard based on command-line parameters. The user can not navigate above the base folder in the file folder hierarchy. File and folder editing is not possible. The file name for sNote Viewer is sNote.exe.

## sImage Viewer

---

sImage Viewer is a simple image viewer.

## sLogoff Screen Saver

---

Secure Utilities includes a screen saver program that is not a screen saver. sLogOff automatically logs off the user after the designated period of inactivity. You can find this file, sLogOff.SCR in the Windows System folder.

## Automatic Logon

---

Automatic Logon Enabled determines whether the automatic logon feature is on. Automatic logon uses the domain, user name, and password stored in the registry to log you on to the computer when the system starts. The Log On to Windows dialog box is not displayed.

## Hide Drives

---

Secure Utilities sets a registry value by checking on a drive letter that removes the drives from "file open" and "file save as" dialogs. These settings are on a user-by-user basis.

## Disable Press and Hold for Right Clicking

---

Press and hold for right-clicking can be disabled for Touch or the Pen input.

## Pricing

---

Secure Utilities 12 is included with Secure Desktop 12.

