

SECURE UTILITIES 13

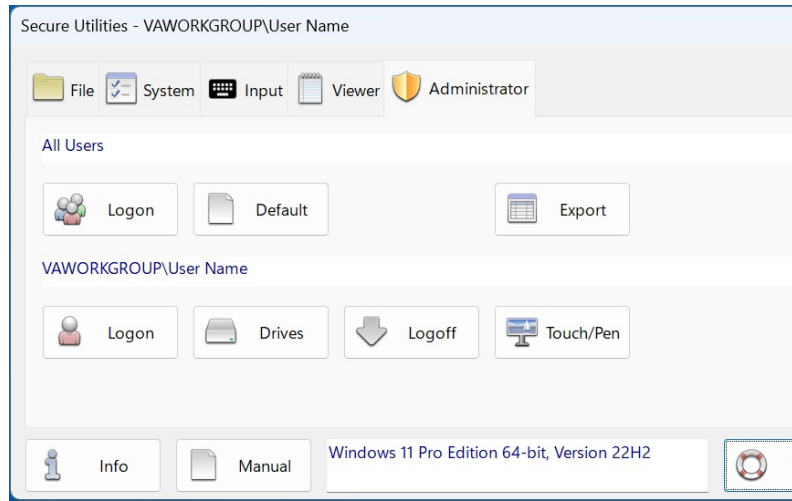
Visual Automation | Secure Utilities 13 | Windows 11 | 64 Bit

sExplore File Explorer

You can use this program instead of File Explorer, which is restricted to a particular folder and file wild card based on command-line parameters. The user can not navigate above the base folder in the file folder hierarchy. File and folder editing is impossible, but users can launch a program or document file. The file name for sExplore File Explorer is sExplore.exe.

sCopy File

This program provides a way to copy files restricted to a particular source and destination folder and file wildcard based on command-line parameters. The user can not navigate above the base folders in the file folder hierarchy. File and folder editing is not possible. The file name for sCopy File is sCopy.exe.



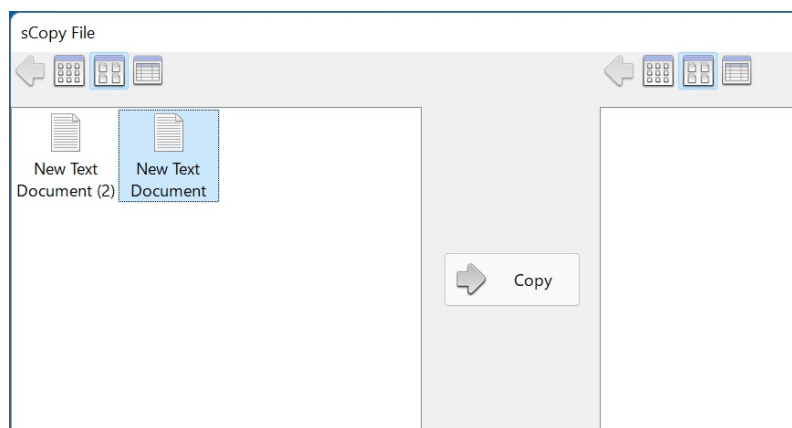
Useful Utilities

Secure Utilities is a collection of small command-line apps and a user interface for helpful registry settings.

File Utilities

sExplore File Explorer displays files for launch. For a simple way to copy files between 2 fixed folder locations, there is sCopy File. To provide access to all start menu and desktop icon file shortcuts, try sMenu Start Menu. Use sArchive File to copy files to a Zip file.

The user can not roam around the file system with these utilities. Or delete files. Or rename files.





sMenu Start Menu

sMenu Start Menu is an included utility to provide access to file shortcuts that correspond to the file shortcuts found in the Start Menu and the Desktop.

sArchive File

This program provides a way to archive files to Zip, restricted to a particular source and destination folder and file wildcard based on command-line parameters. The user can not navigate above the base folders in the file folder hierarchy. File and folder editing is not possible. The file name for sArchive File is sArchive.exe.

sRun Program

sRun Program launches the same Run dialog started from the Start menu. The file name for sRun Program is sRun.exe.

sControl Panel

This program launches the Control Panel dialog started from the Start menu. The file name for the sControl Panel is sControl.exe.

System Utilities

sRun Program displays the system Run Dialog. Use the sControl Panel to launch the Windows Control Panel. sEject Device displays the Eject Device Dialog. sRes Resolution sets the display resolution. Use sLock Workstation to lock up the workstation.

Input Utilities

sKey On-Screen Keyboard is a simple on-screen keyboard for use when there is only a touch screen and not a physical keyboard.

Viewer Utilities

sNote Viewer is a text file viewer. sImage Viewer views image files. sCSV Viewer views CSV files. sZIP Viewer views the content of ZIP files.

Registry Settings

Set Auto Logon. Set Ctrl + Alt + Delete screen settings. Hide Drives. Set Auto Logoff Screen Saver settings. Disable Press and Hold for Right Clicking.

sEject Device

This program launches the Eject Device dialog. The file name for the sEject Device is sEject.exe.

sRes Resolution

This program sets the display resolution. The file name for the sRes Resolution is sRes.exe.

sLock Workstation

This program locks the workstation. The file name for the sLock Workstation is sLock.exe.

sKey On-Screen Keyboard

sKey On-Screen Keyboard is a simple on screen keyboard for use when there is only a touch screen and not a physical keyboard.

sNote Viewer

This program provides a way to view text files restricted to a particular folder and file wildcard based on command-line parameters. The user can not navigate above the base folder in the file folder hierarchy. File and folder editing is not possible. The file name for sNote Viewer is sNote.exe.

sImage Viewer

sImage Viewer is a simple image viewer.

sCSV Viewer

sCSV Viewer is a simple CSV viewer (comma separated value).

sZIP Viewer

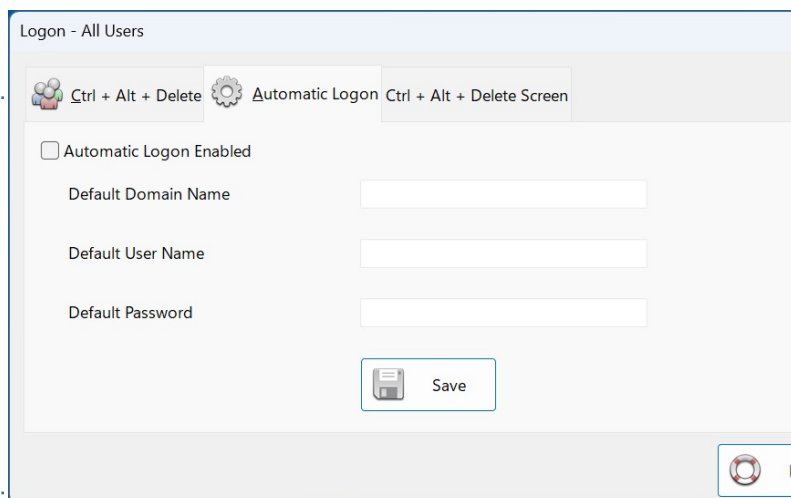
sZIP Viewer is a simple viewer that shows the content of a ZIP file.

sLogoff Screen Saver

Secure Utilities includes a screen saver program that is not a screen saver. sLogOff automatically logs off the user after the designated period of inactivity. You can find this file, sLogOff.scr in the Windows System folder.

Automatic Logon

Automatic Logon Enabled determines whether the automatic logon feature is on. Automatic logon uses the domain, user name, and password stored in the registry to log you on to the computer when the system starts. The Log On to Windows dialog box is not displayed.



Hide Drives

Secure Utilities sets a registry value by checking on a drive letter that removes the drives from "file open" and "file save as" dialogs. These settings are on a user-by-user basis.

Disable Press and Hold for Right Clicking

Press and hold for right-clicking can be disabled for Touch or the Pen input.

Pricing

Secure Utilities 13 is included with Secure Desktop 13.

